



# **Town of The Blue Mountains Transportation Master Plan**

## **Online Public Information Centre 1**



## Town of The Blue Mountains Transportation Master Plan (TMP)



[Click Here](#)



# Transportation Master Plan Study Area



The TMP Study Area is the Town of The Blue Mountains, which is home to a dynamic and diversifying economy with more than 20 km of Georgian Bay shoreline, the Blue Mountain Ski Resort, the Bruce Trail, and rich agricultural lands.

# Transportation Master Plan Background & Context



The Town completed a Comprehensive Transportation Strategic Plan in 2010, which provided a framework to address the needs of the Town's road infrastructure, with an emphasis on Highway 26 corridor improvements. Since then, growth patterns, tourism activity and desires of the community have evolved. Interest in Highway 26's role in the region is anticipated to continue, but there has also been a **refocus on finding a more balanced, multimodal approach to the movement of people and goods.**

The 2010 Plan is a valuable document to build from, but will only provide for some aspects of the desired outcomes of this TMP. This TMP project is a new plan to **balance the needs of all road users, to build on the Town's successes and keep the Town a desirable place to live and visit year-round.**





# Transportation Master Plan Objectives



- **Improve connectivity and travel choices** by providing reliable, equitable and accessible options
- **Improve the safety of transportation systems for all users**
- Plan the transportation network to **support seasonal tourism fluxes and efficient development within the municipality**
- **Encourage active transportation and transit**
- **Plan transportation infrastructure that assists in reducing greenhouse gas emissions**
- Align with the transportation vision and goals of Grey County and **improve regional transportation and transit connectivity**
- Support the **movement of goods and services throughout the region**

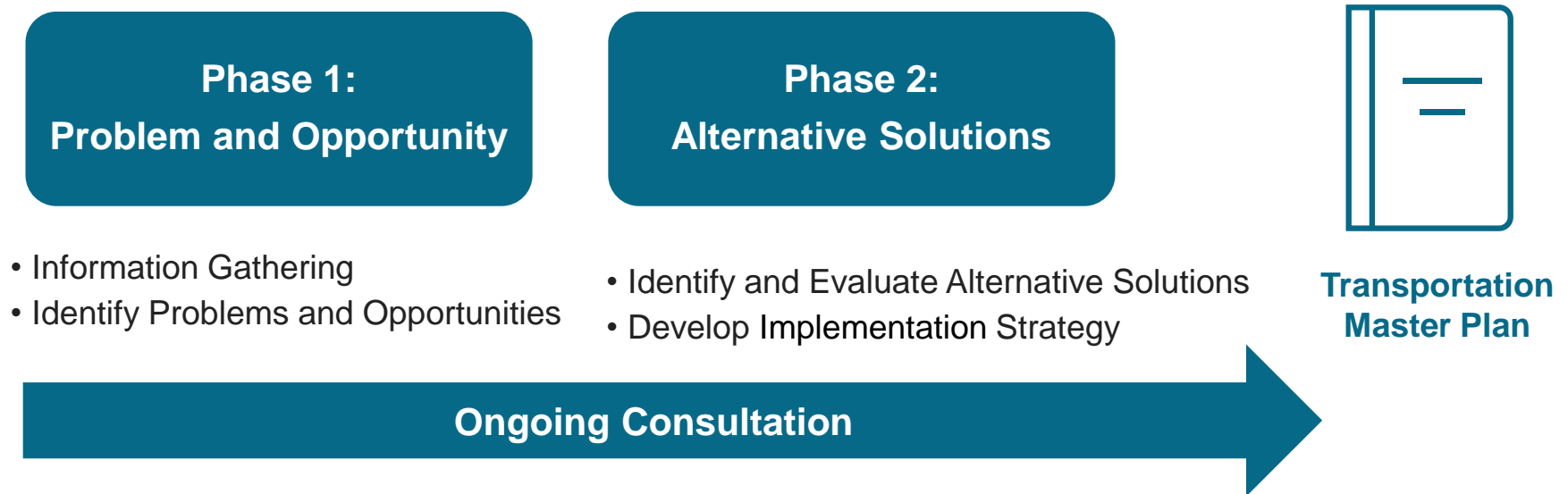


# Master Planning Process



This study is being undertaken in accordance with Approach #1 of the Master Planning Process, as outlined in Appendix 4 of the Municipal Class Environmental Assessment (MCEA) document (October 2000, as amended in 2015).

Phases 1 and 2 of the MCEA process will generally be addressed and will form the basis for the recommended Schedule B and C transportation infrastructure projects identified in the TMP Update report.



# Consultation Process



## Phase 1: Problem and Opportunity

- Information Gathering
- Identify Problems and Opportunities

## Phase 2: Alternative Solutions

- Identify and Evaluate Alternative Solutions
- Develop Implementation Strategy



**Transportation  
Master Plan**

Ongoing Consultation

Notice of Study  
Commencement (May 2021)

Online Survey  
(June – July 2021)

**Online Public Information Centre 1  
(July 29- August 27, 2021)**

Online Public Information Centre 2  
(November 2021)

Online Public Information Centre 3  
(April / May 2022)

Notice of Study Completion  
(July 2022)

# Challenges and Opportunities

## Challenges

- ★ Significant growth and development
- ★ Traffic and parking constraints
- ★ Disconnected/absent active transportation links
- ★ Highway 26 corridor
- ★ Seasonal demand fluctuations
- ★ Winter weather conditions

## Opportunities

- ▲ Enhance multimodal accessibility
- ▲ Encourage active transportation and public transit
- ▲ Integrate regional travel demands
- ▲ Improve connectivity for trail users
- ▲ Balance trail user safety and vehicular activity

**Comment**





# Community Characteristics



The Town of The Blue Mountains has a population of approximately 8,100 residents, and another estimated 9,200 live in the town seasonally or periodically during the year. However, the permanent resident population has recently increased due to impacts of the COVID-19 Pandemic.



*Source: Google Street View*

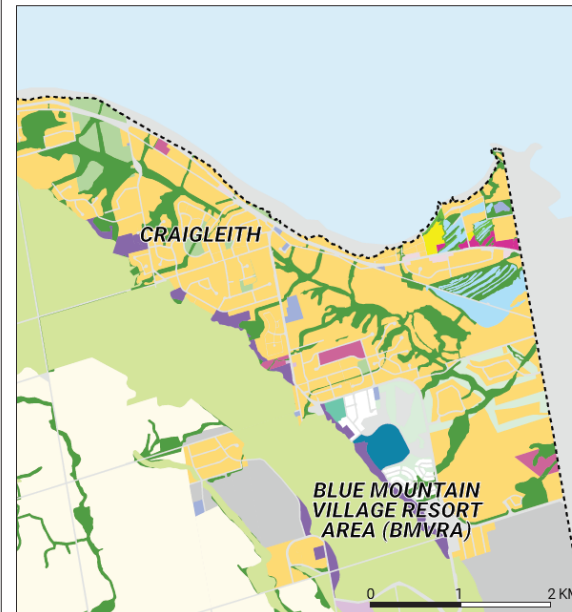
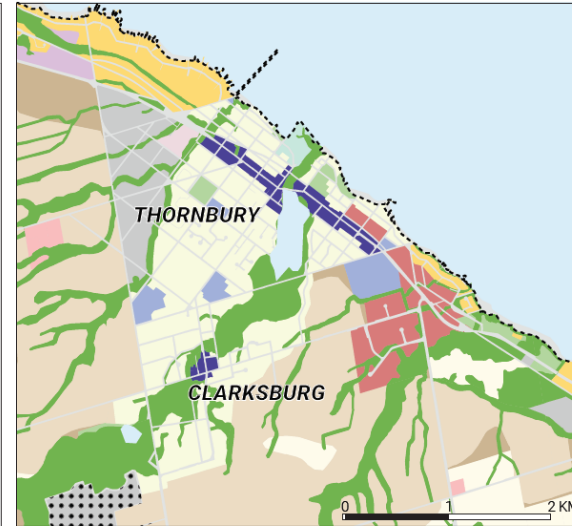
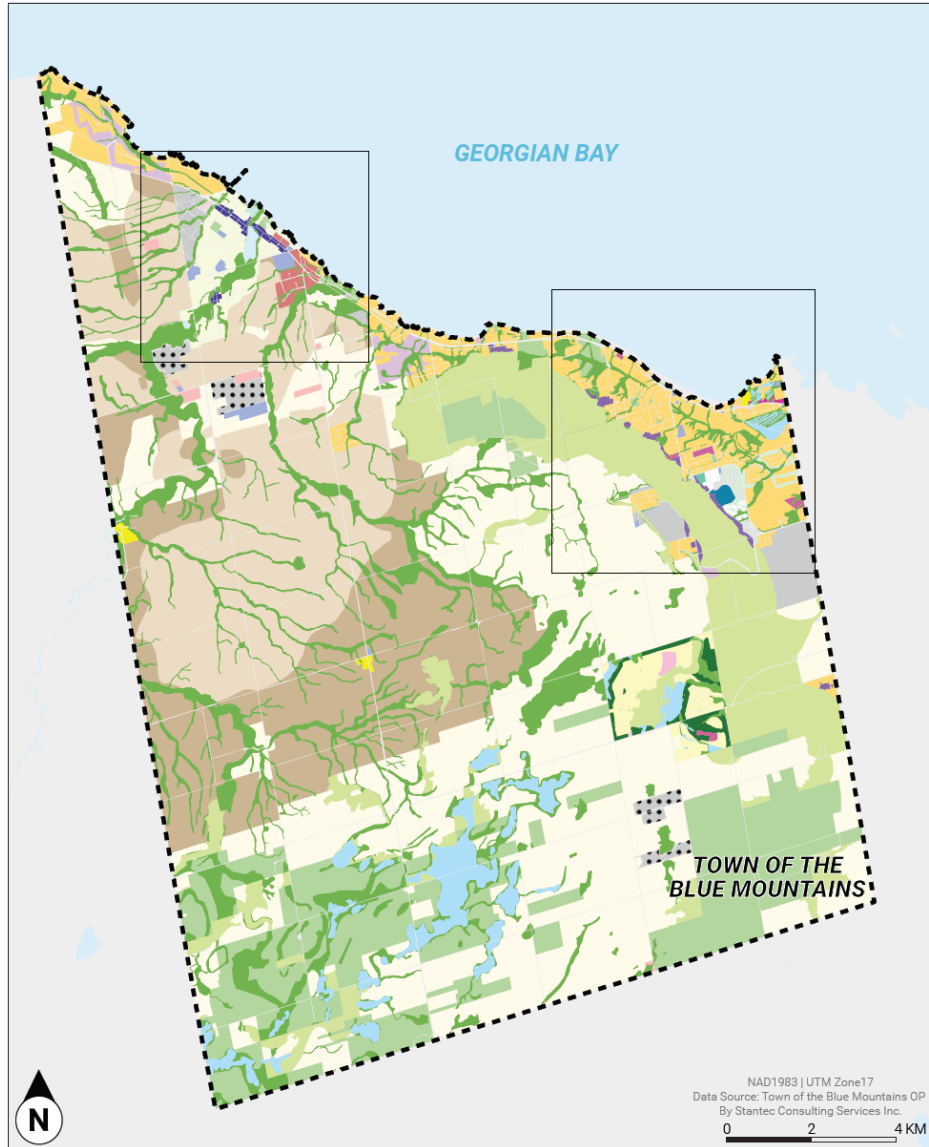


*Source: Google Street View*



*Source: Google Street View*

# Land Use Characteristics

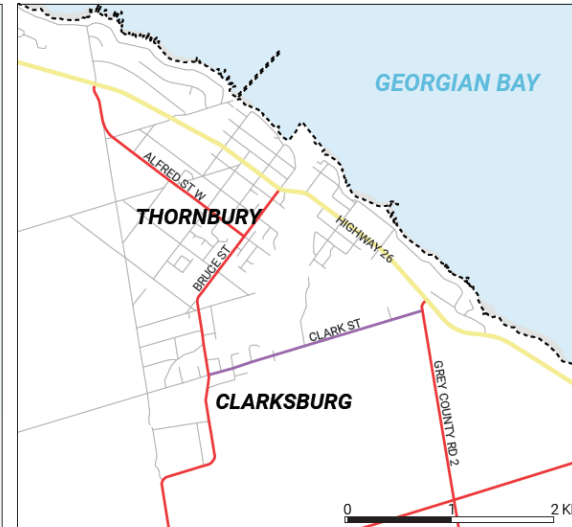
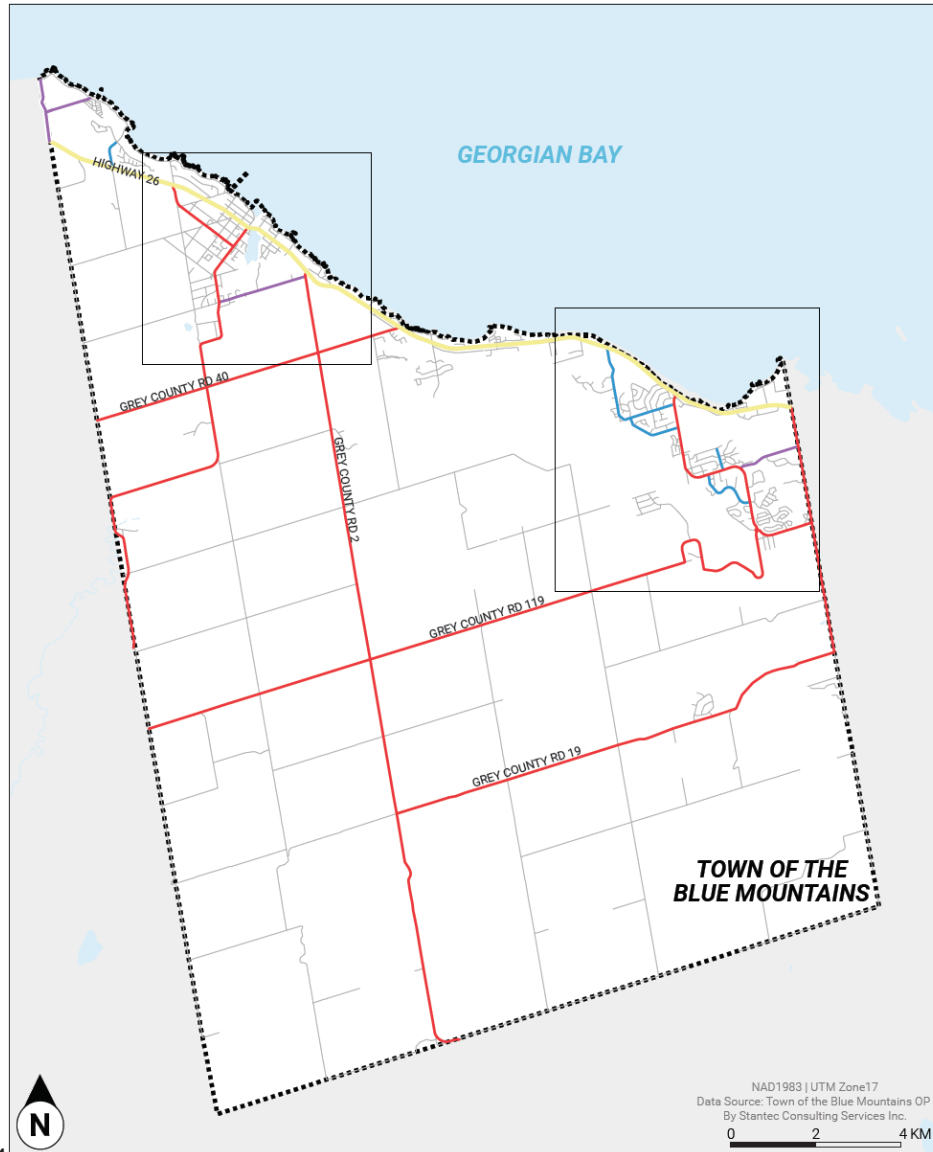


## LAND USE

TOWN OF THE BLUE MOUNTAINS TMP

- Agricultural
- BMVRA-Low Density Residential
- BMVRA-Medium Density Residential
- BMVRA-Open Space
- BMVRA-Resort Commercial
- BMVRA-Core
- Commercial Corridor
- Community Living Area
- Craileith Village Commercial
- Craileith Village HSFPWS
- Downtown Area
- Escarpment
- Escarpment Golf (Castle Glen)
- Future Secondary Plan Area
- Hazard
- Hamlet Area
- Harbour Area
- Institutional Area
- Major Open Space
- Mineral Resource Extraction Area
- Rural
- Resort Commercial
- Recreational Commercial Area
- Rural Employment Lands
- Residential Recreational Area
- Recreational Ski
- Resort Residential (Castle Glen)
- Special Agricultural
- Urban Employment Area
- Village Commercial
- Wetlands

# Existing Road Network



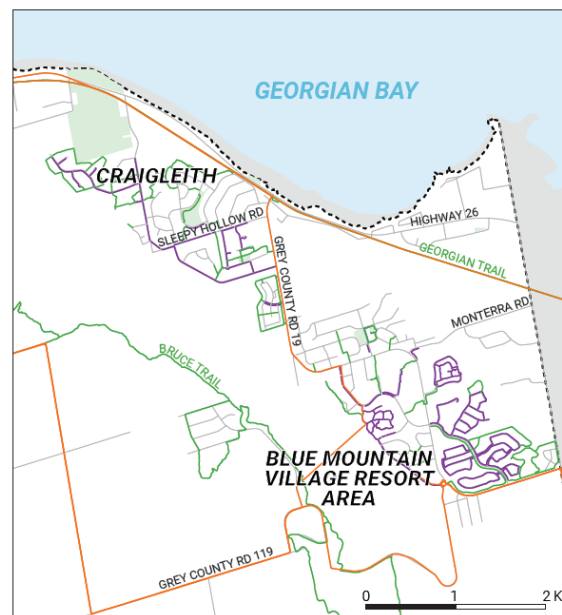
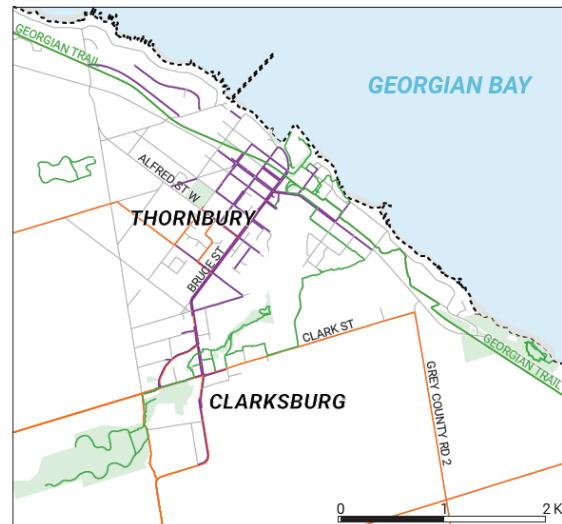
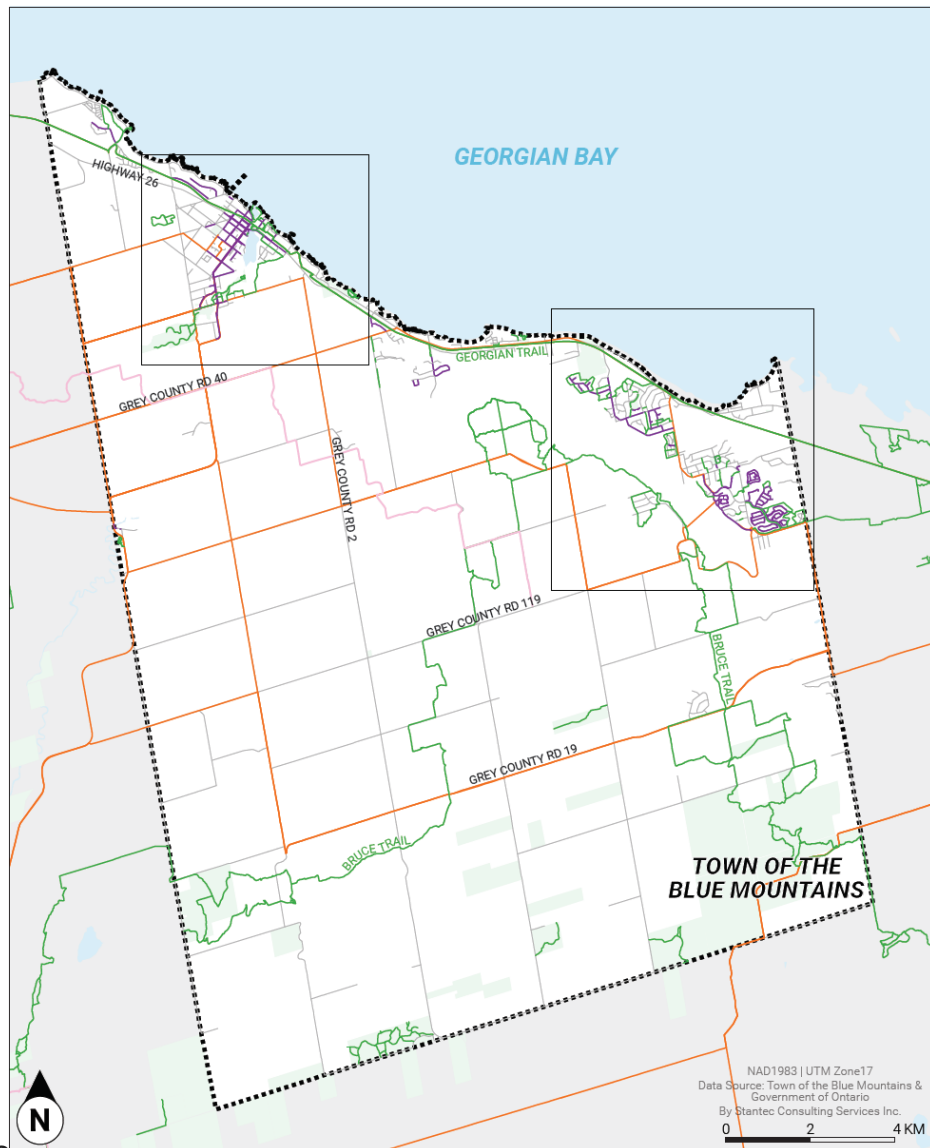
## ROAD NETWORK

TOWN OF THE BLUE MOUNTAINS TMP

- Highway 26
- County Roads
- Major Collector Roads
- Minor Collector Roads
- Local Roads



# Existing Active Transportation Network



## ACTIVE TRANSPORTATION NETWORK

TOWN OF THE BLUE MOUNTAINS TMP

- Sidewalks
- Trails
- Road Cycling Route
- Snowmobile Route

# Existing Off-Road Vehicle (ORV) Use



## Effective July 1, 2020:

- ORV use extended to Extreme Terrain Vehicles (XTVs) and Off-Road Motorcycles (ORMs), with restrictions

## Effective January 1, 2021:

- Amendments to O.Reg. 316/03 Regarding Off-Road Vehicle access on Municipal Highways
- Allow ORV use on all roads in the municipalities prescribed in O.Reg. 8/03
- Permits these municipalities to pass by-laws to *restrict or prohibit* ORV access on some or all roads under their jurisdiction
- Replaces the previous requirement that municipalities had to enact a by-law to *permit* ORVs to operate on municipal highways



## What does this mean for the Town of The Blue Mountains?

- Existing regulatory framework prescribed under O.Reg. 316/03 continues to apply to municipalities not listed in O.Reg. 8/03
- The Town of The Blue Mountains is not listed in O.Reg.8/03 and is therefore not affected by the 2021 amendments
- In accordance with Town By-Law No. 2004-69, All Terrain Vehicles shall not be driven on a Town of The Blue Mountains roadway



# Existing Transit Network



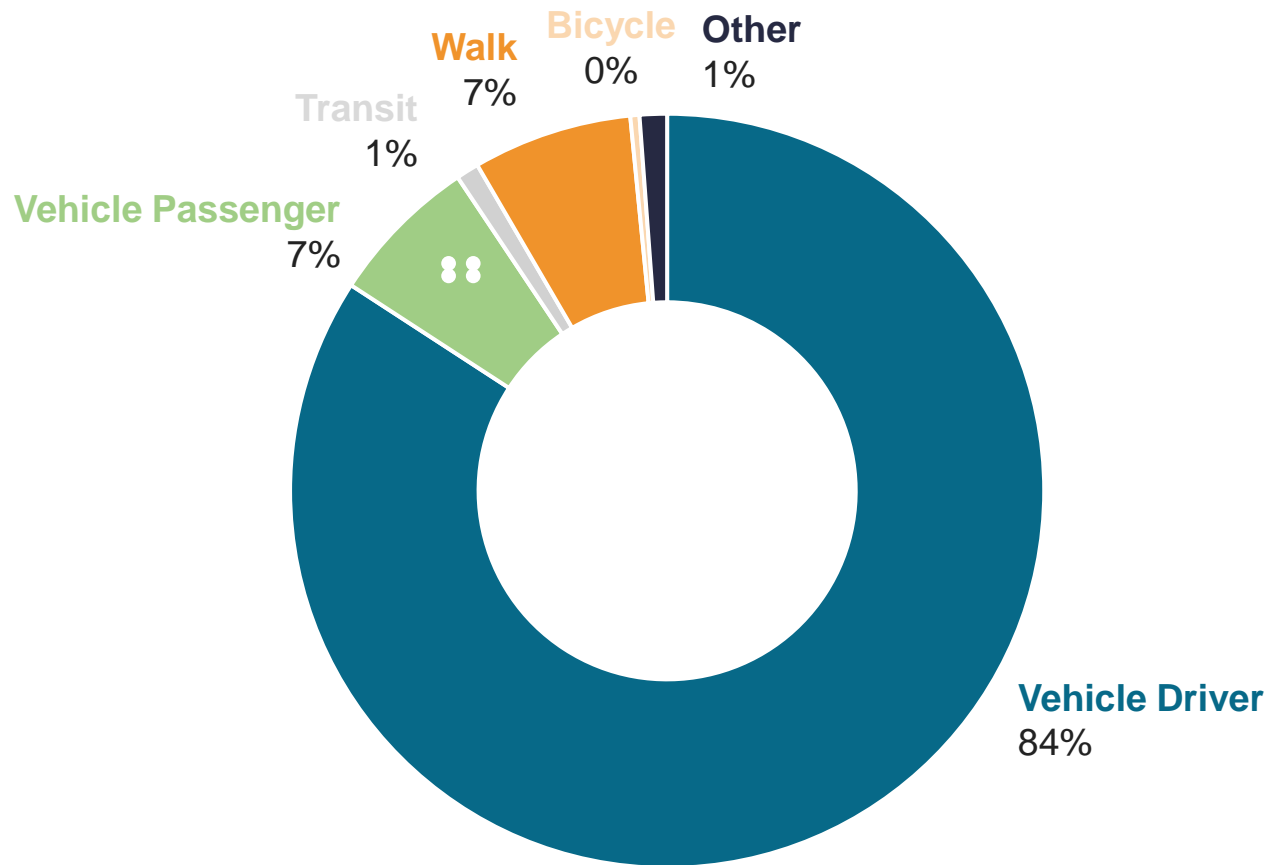
Collingwood Transit (Colltrans)  
**Blue Mountain Transit Link**



# Existing Travel Trends: Mode Share



## Commuting Mode Share

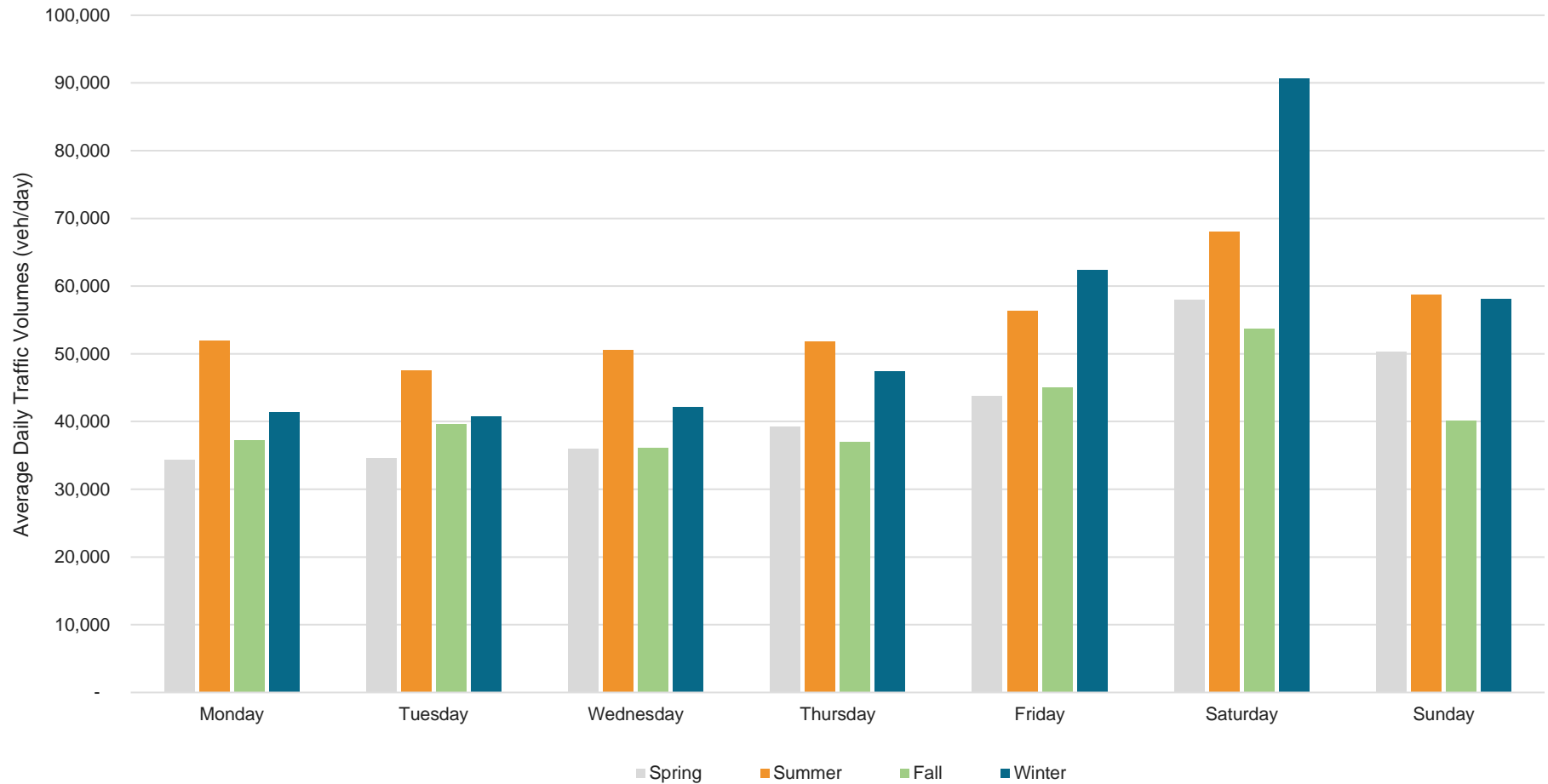


Source: Statistics Canada, 2016 Census of Population

# Existing Travel Trends: Seasonal Trips



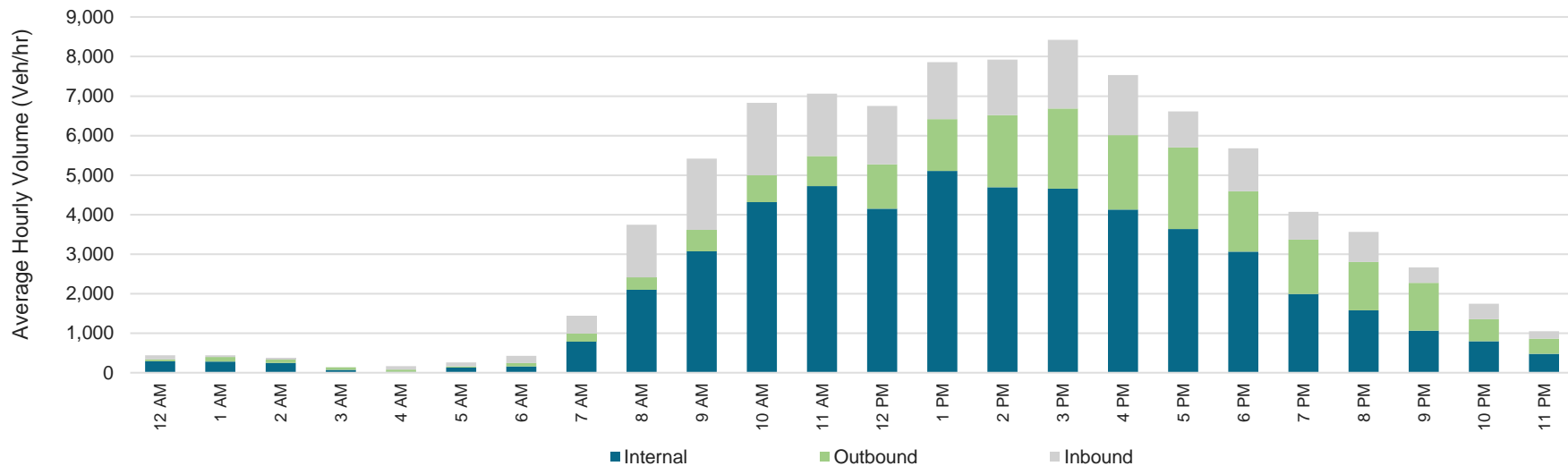
Seasonal Trip Frequency by Day of the Week (2019)



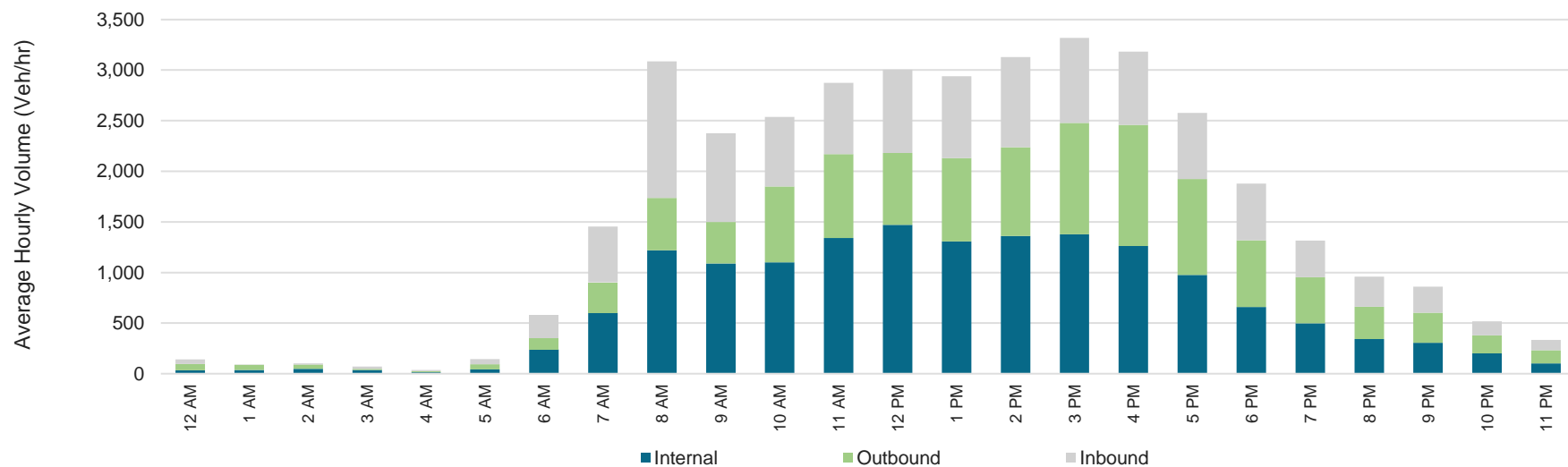
# Existing Travel Trends: Hourly Distribution



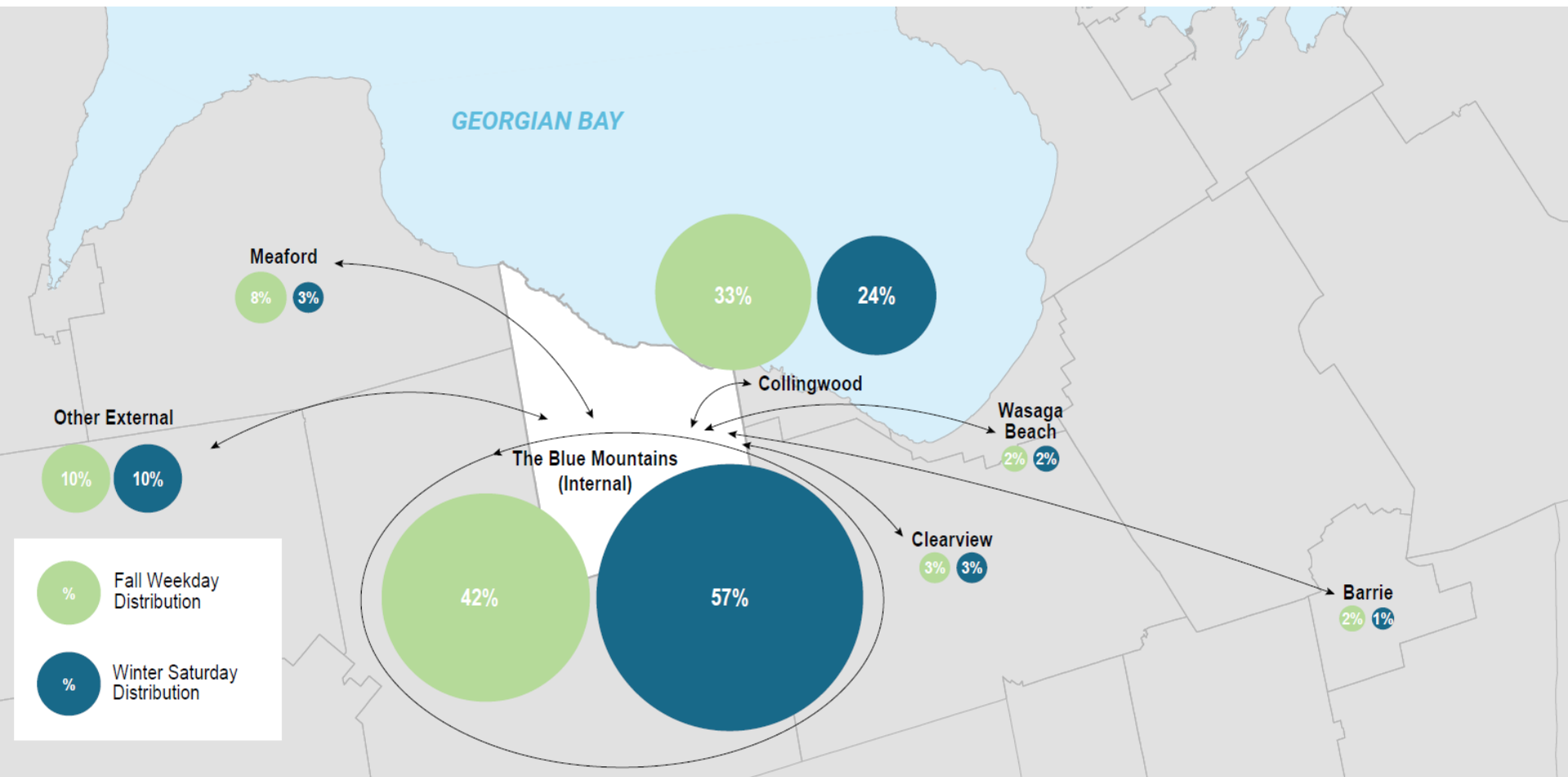
## Average Hourly Trip Frequency (Winter Saturday, 2019)



## Average Hourly Trip Distribution (Fall Weekday, 2019)



# Existing Travel Trends: Traffic Distribution



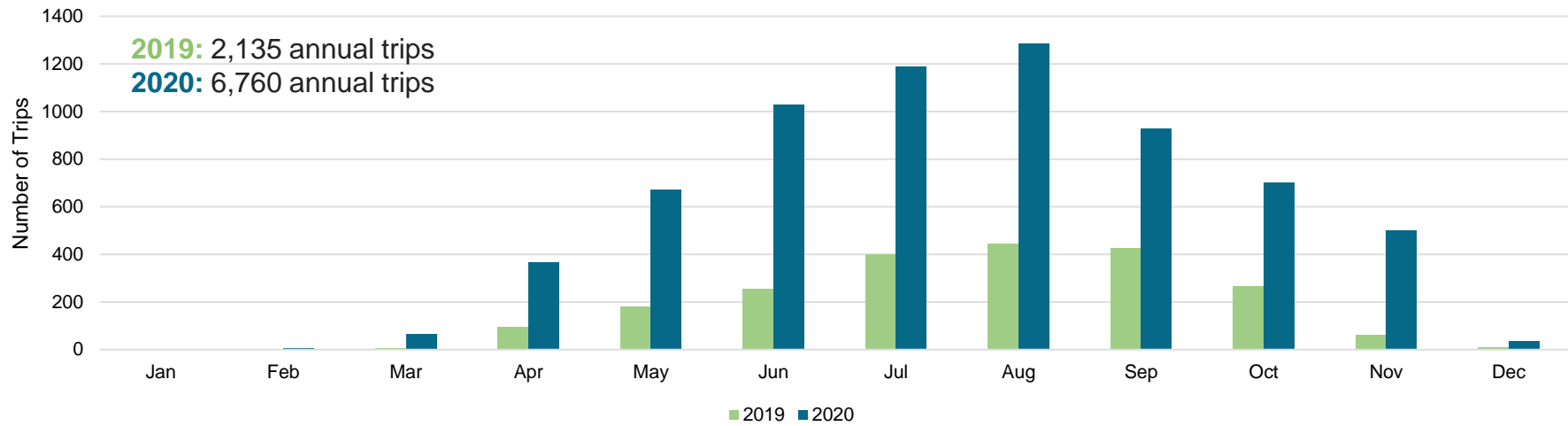
Source: StreetLight, 2019



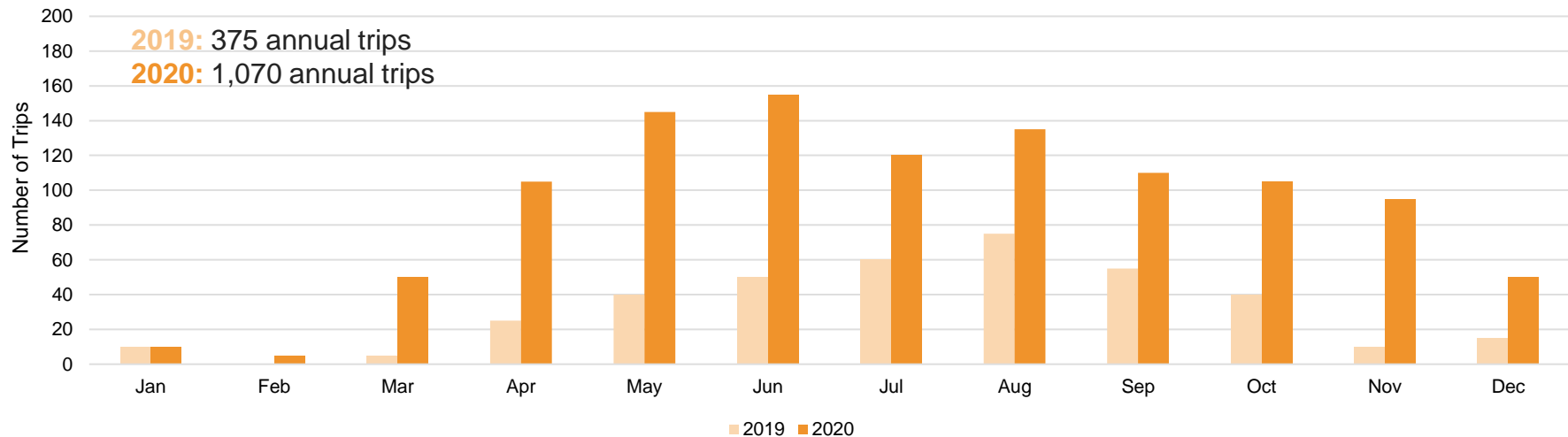
# Existing Trends: Active Transportation



## Cycling Trips by Month on Georgian Trail



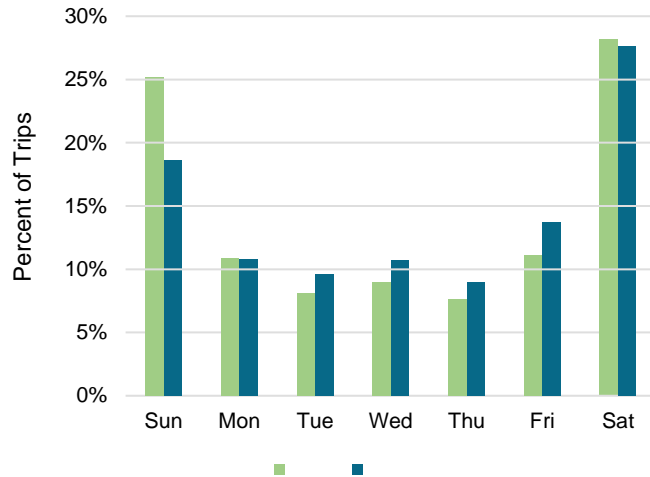
## Pedestrian Trips by Month on Georgian Trail



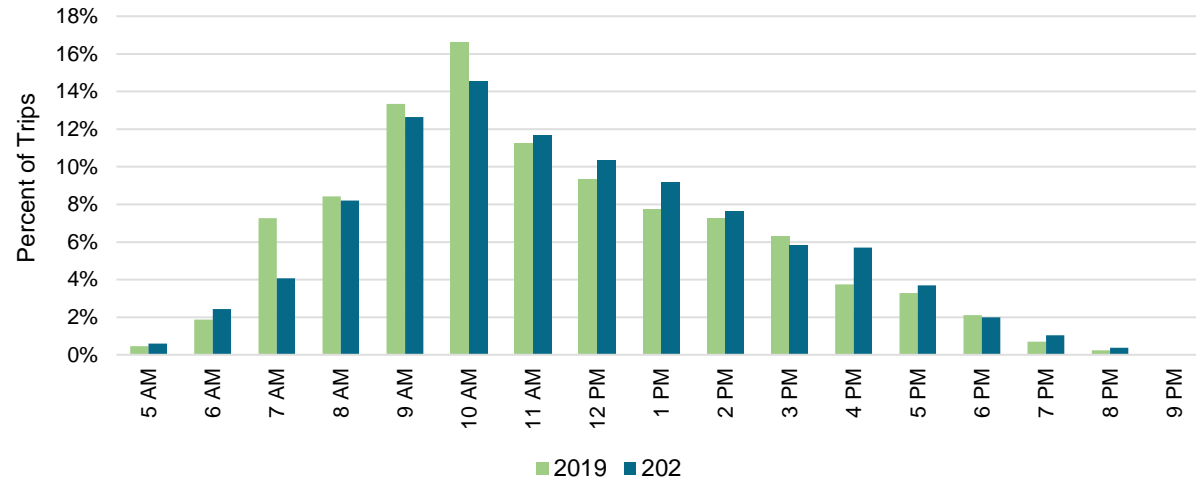
# Existing Trends: Active Transportation



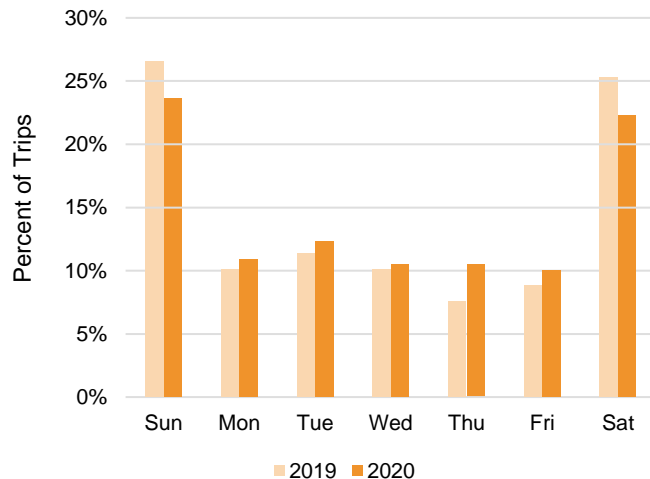
## Cycling Trips (%) by Day of Week



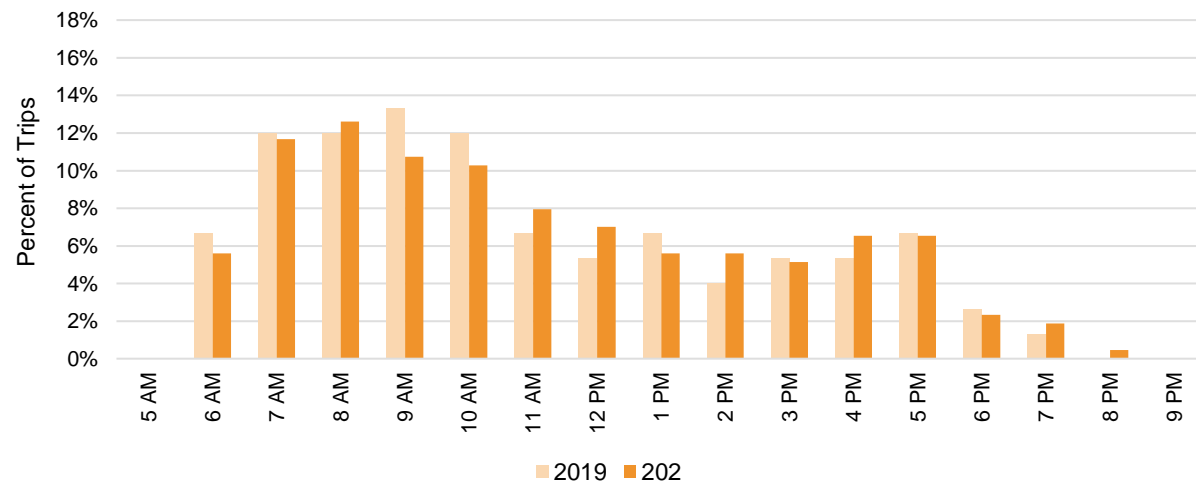
## Cycling Trips (%) by Hour of Day on Georgian Trail



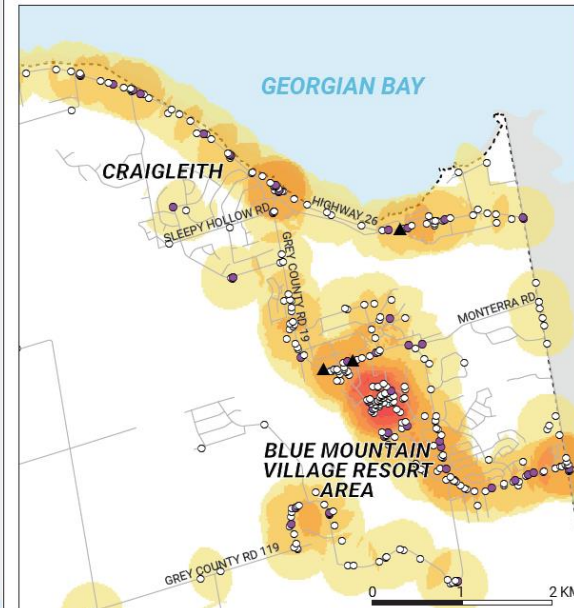
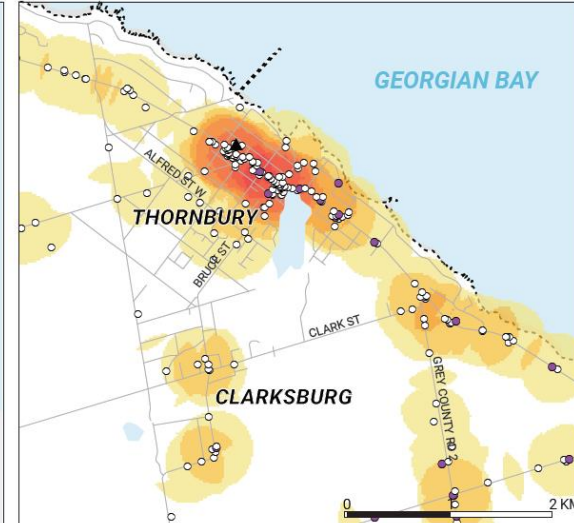
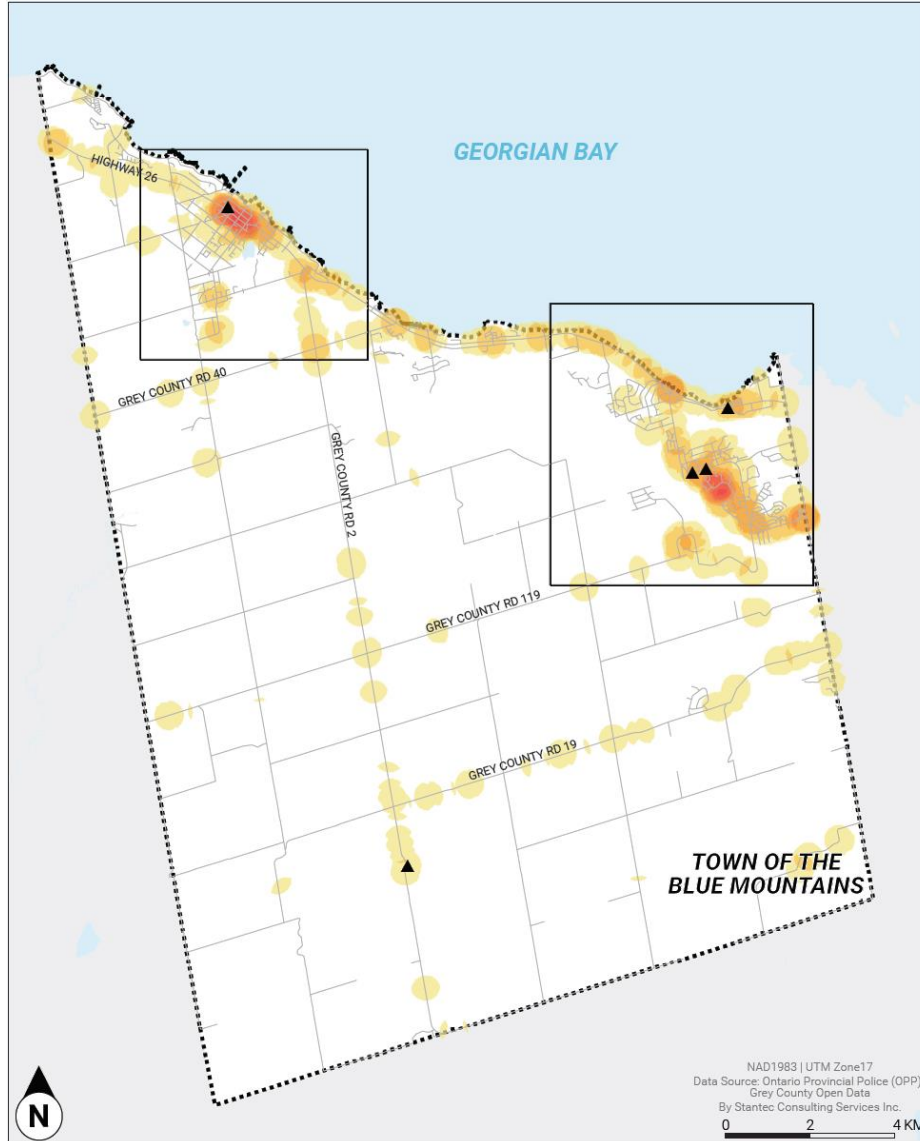
## Pedestrian Trips (%) by Day of Week



## Pedestrian Trips (%) by Hour of Day on Georgian Trail



# Collision Data Review: All Collisions



## COLLISION EVENTS

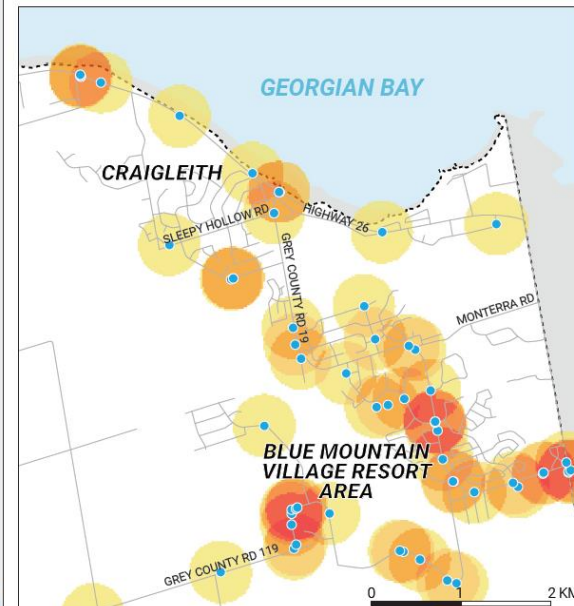
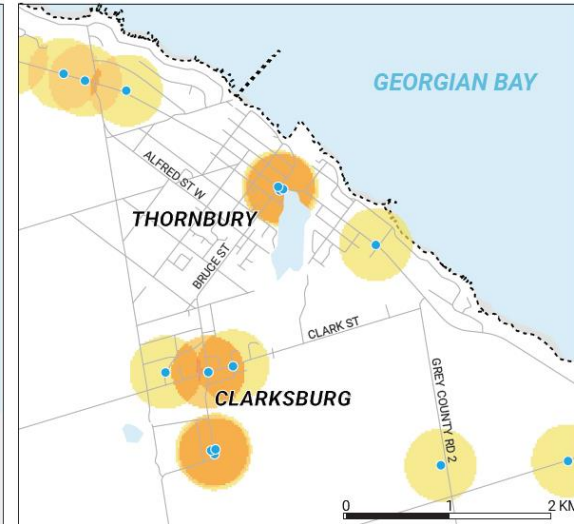
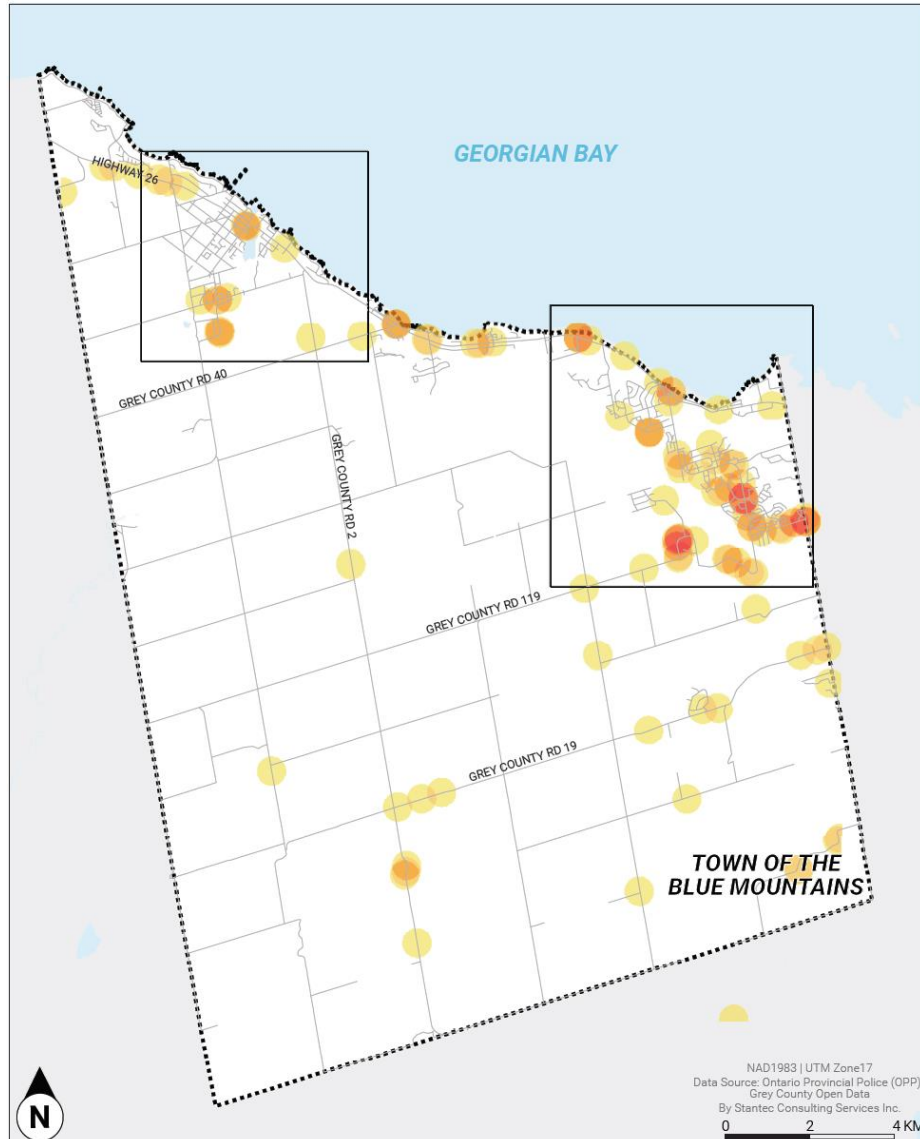
TOWN OF THE BLUE MOUNTAINS TMP

Number of Collision Events, 2015-2020



- ▲ Fatal Injury
- Non-Fatal Injury
- Property Damage Only

# Collision Data Review: Speed Related



## SPEED-RELATED COLLISION EVENTS

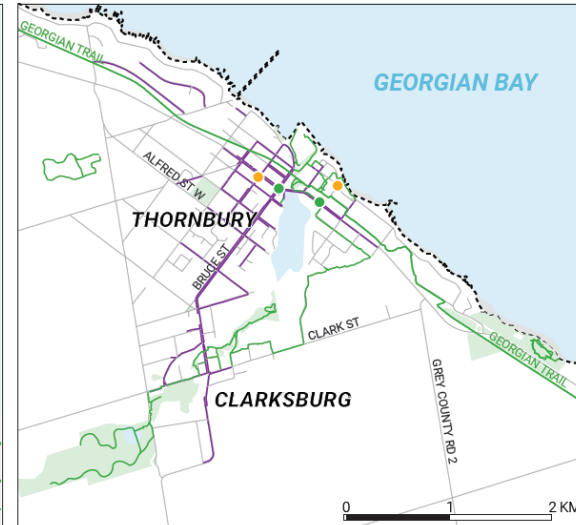
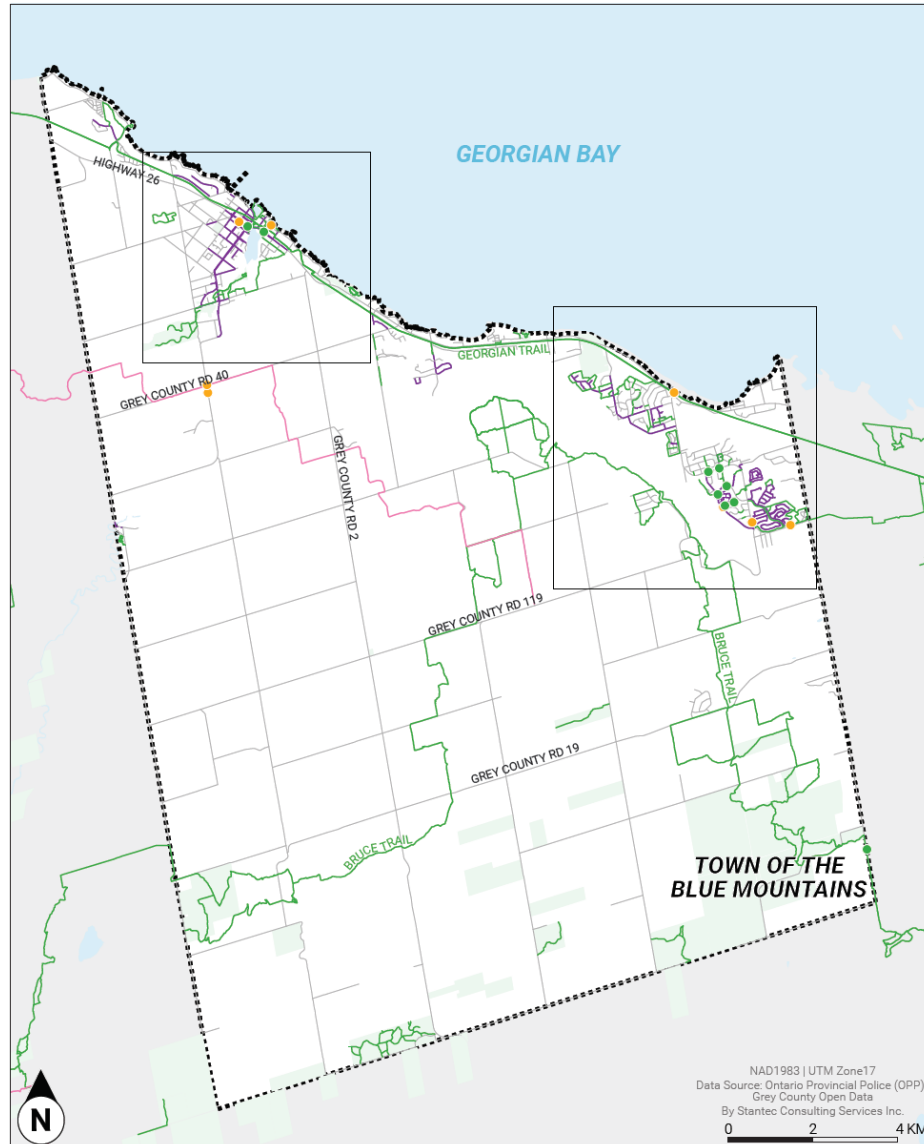
TOWN OF THE BLUE MOUNTAINS TMP

Number of Speed-Related Collision Events, 2015-2020



● Speed-Related Collision

# Collision Data Review: Pedestrian and Cyclist



## PEDESTRIAN AND CYCLIST COLLISION EVENTS

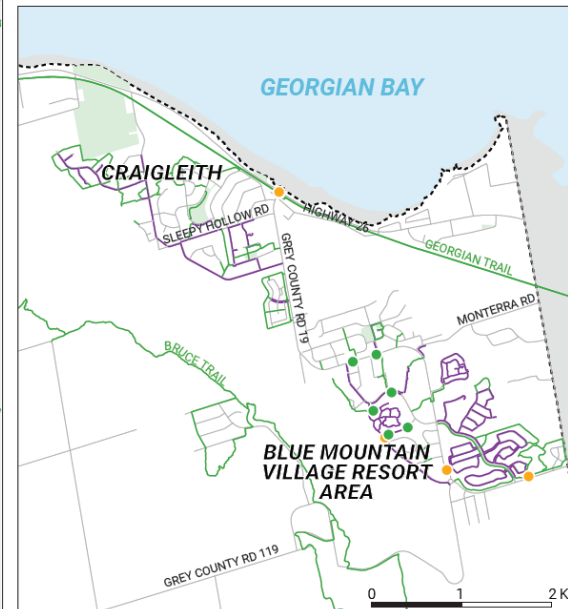
TOWN OF THE BLUE MOUNTAINS TMP

### Collision Type

- Pedestrian
- Cyclist

### Active Transportation Network

- Sidewalks
- Trails
- Snowmobile Route





# Online Survey Results (Placeholder Slide 1)

---



# Online Survey Results (Placeholder Slide 2)

---



# Online Survey Results (Placeholder Slide 3)

---



# Draft Vision Statement



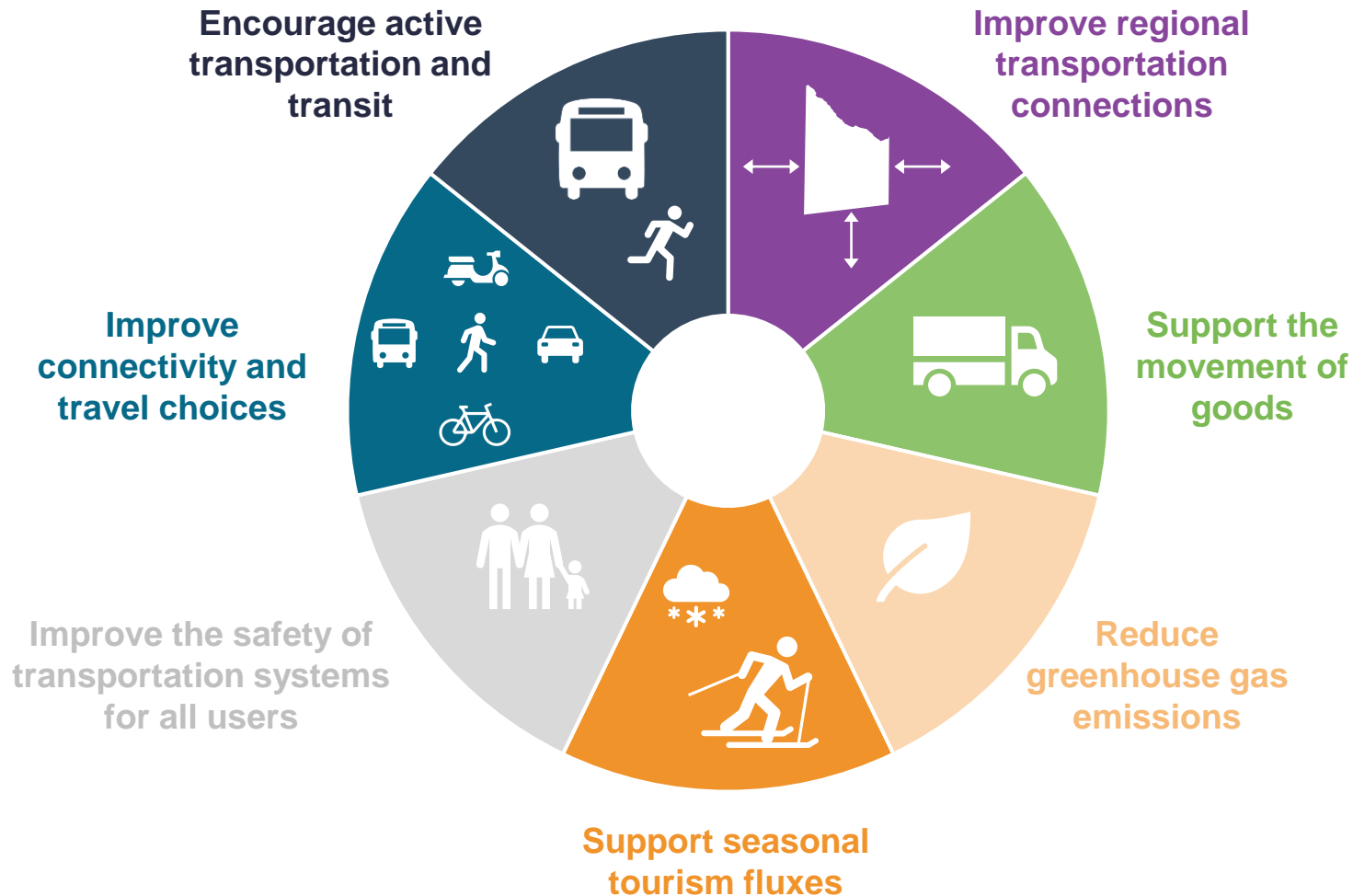
As part of the TMP study, the Town will develop a vision statement that will guide and frame the actions and policies developed as part of this TMP. The Town is seeking your input on the following statement:

***As the Town of The Blue Mountains continues to grow, the TMP will provide a blueprint to enhance connections between neighbourhoods, jobs, services, local businesses, recreation and tourism opportunities, balancing all modes of transportation to become a more livable and healthy community.***

**Comment**



# Guiding Principles





# Proposed Evaluation Criteria



Preliminary Evaluation Criteria
Increase the number of shared ride trips
Improve traffic safety (reduce the number of collisions and severity of collisions)
Provide more sidewalks and trails
Increase the number of new cycling facilities on road corridors
Increase connectivity of road network
Decrease travel time
Increase the number of low-carbon vehicle amenities
Increase percentage of accessible intersections
Provide more accessible and equitable transit options
More frequent transit routes and stops
Decrease average travel time by transit
Increase cycling and trail connectivity to key destinations

**Comment**

# Next Steps

## Phase 1 Problem and Opportunity

- Information Gathering
- Identify Problems and Opportunities

## Phase 2 Alternative Solutions

- Identify and Evaluate Alternative Solutions
- Develop Implementation Strategy



**Transportation  
Master Plan**

Ongoing Consultation

Notice of Study  
Commencement (May 2021)

Online Survey  
(June – July 2021)

**Online Public Information Centre 1  
(July 29- August 27, 2021)**

Online Public Information Centre 2  
(November 2021)

Online Public Information Centre 3  
(April / May 2022)

Notice of Study Completion  
(July 2022)

# Next Steps



Please share your thoughts and ideas!



Email the study team: [tmp@thebluemountains.ca](mailto:tmp@thebluemountains.ca)



Complete the [Comment Form](#)



Contact a member of the study team:

Adam Fraser  
TMP Project Coordinator,  
Town of The Blue Mountains  
Phone: 705-351-2630  
Email: [tmp@thebluemountains.ca](mailto:tmp@thebluemountains.ca)

John Heseltine, MCIP  
Project Manager, Senior Planner  
Stantec Consulting Ltd.  
Phone: 902-481-1477  
Email: [john.heseltine@stantec.com](mailto:john.heseltine@stantec.com)

**Please provide your feedback by August 27, 2021**