

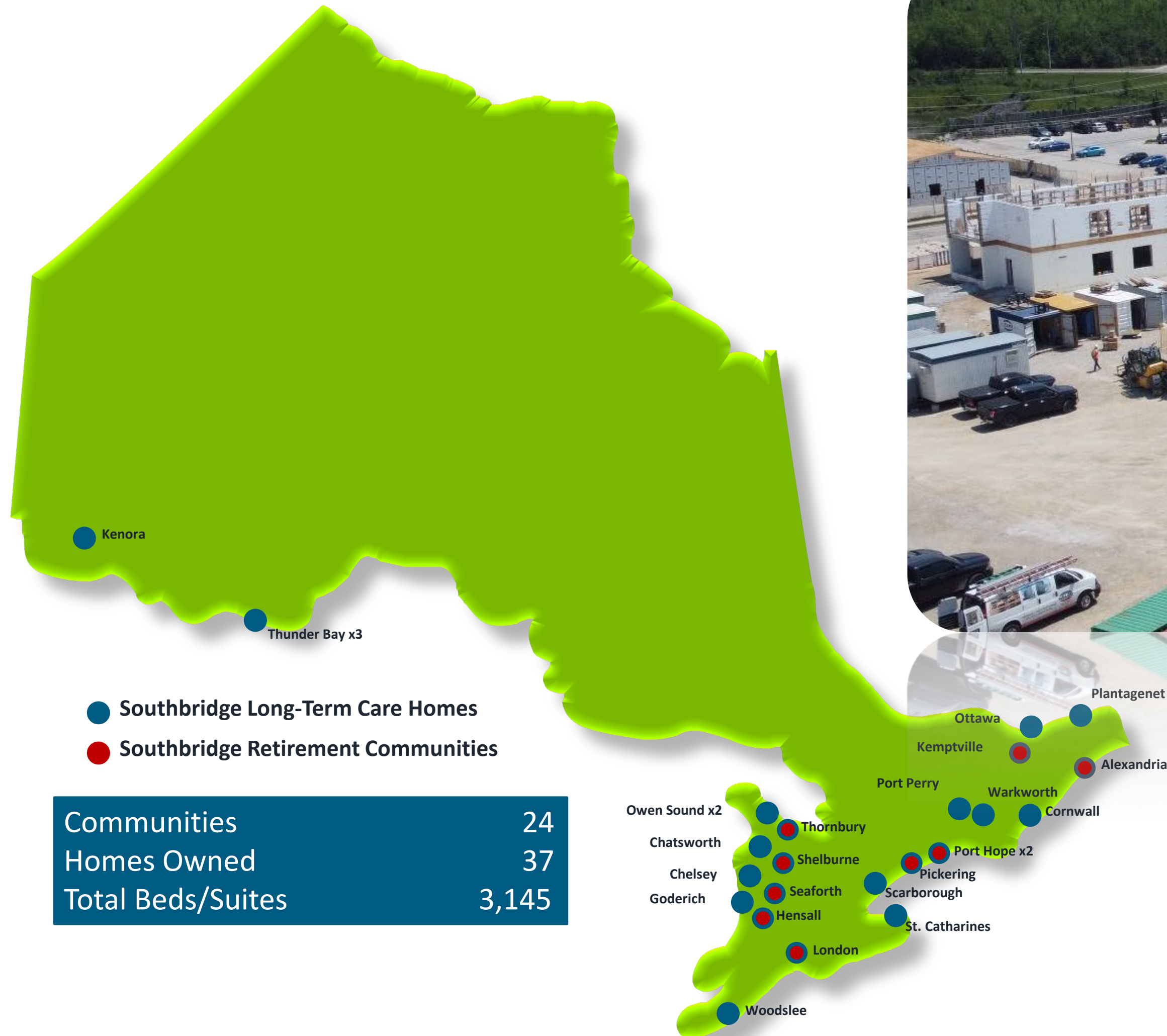


# MINISTER'S ZONING ORDER REQUEST

## // CONTINUUM OF CARE DEVELOPMENT



# // SOUTHBRIDGE OVERVIEW



We currently have four new long-term care (LTC) homes under construction in Owen Sound, London, Kemptville, and Cornwall, each with 160 beds and built to the new standards.



# // ERRINRUNG LONG-TERM CARE



Errinrung LTC is comprised of 18 new beds and 42 'C' beds that need to be redeveloped.

The current application with the Ministry of Long-Term Care for 128 LTC beds is being updated to 160 beds.

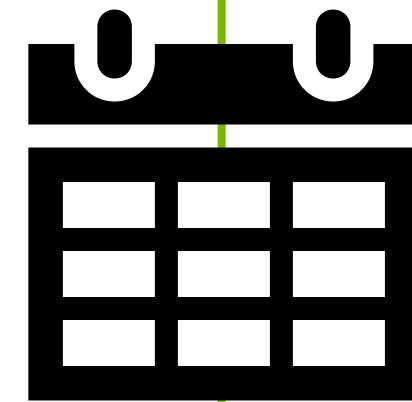
We have committed to the completion of this redevelopment project by December 2023.



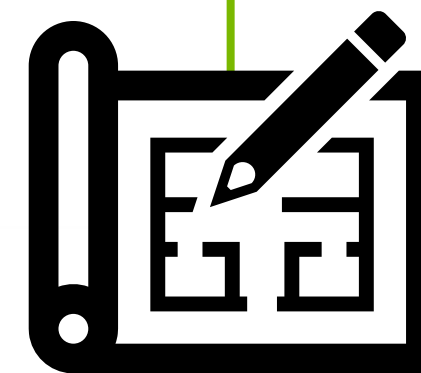
# // MINISTRY OF LONG-TERM CARE



The Ministry of Long-Term Care is looking to have as many projects started in 2021 as possible.



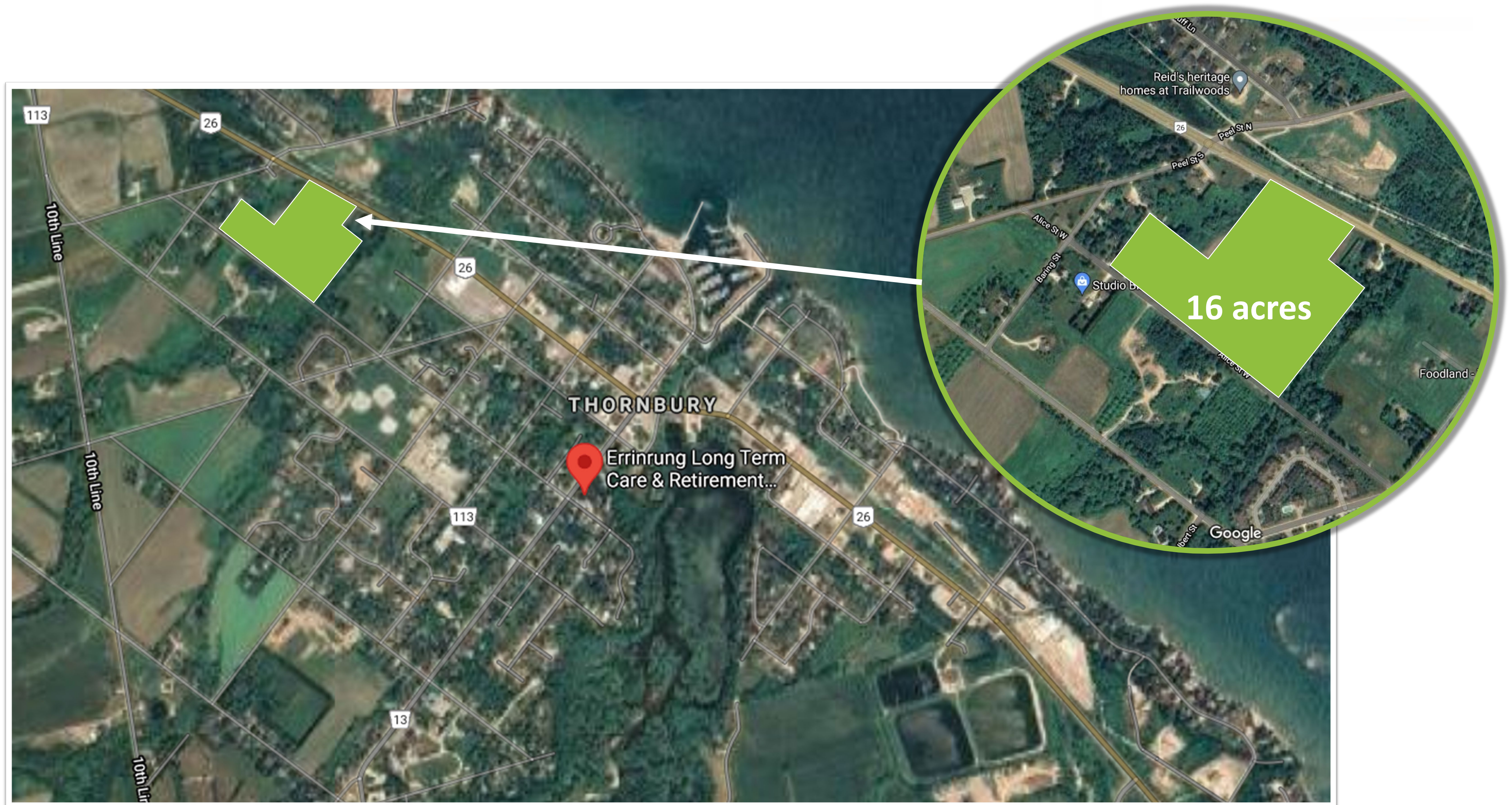
With the Minister's Zoning Order support being requested we could possibly start construction as early as December 2021.



The Ministry's next steps will be to accept our application, approve our site and issue a **Development Agreement (DA)**. The DA allows us to proceed with the construction drawings.



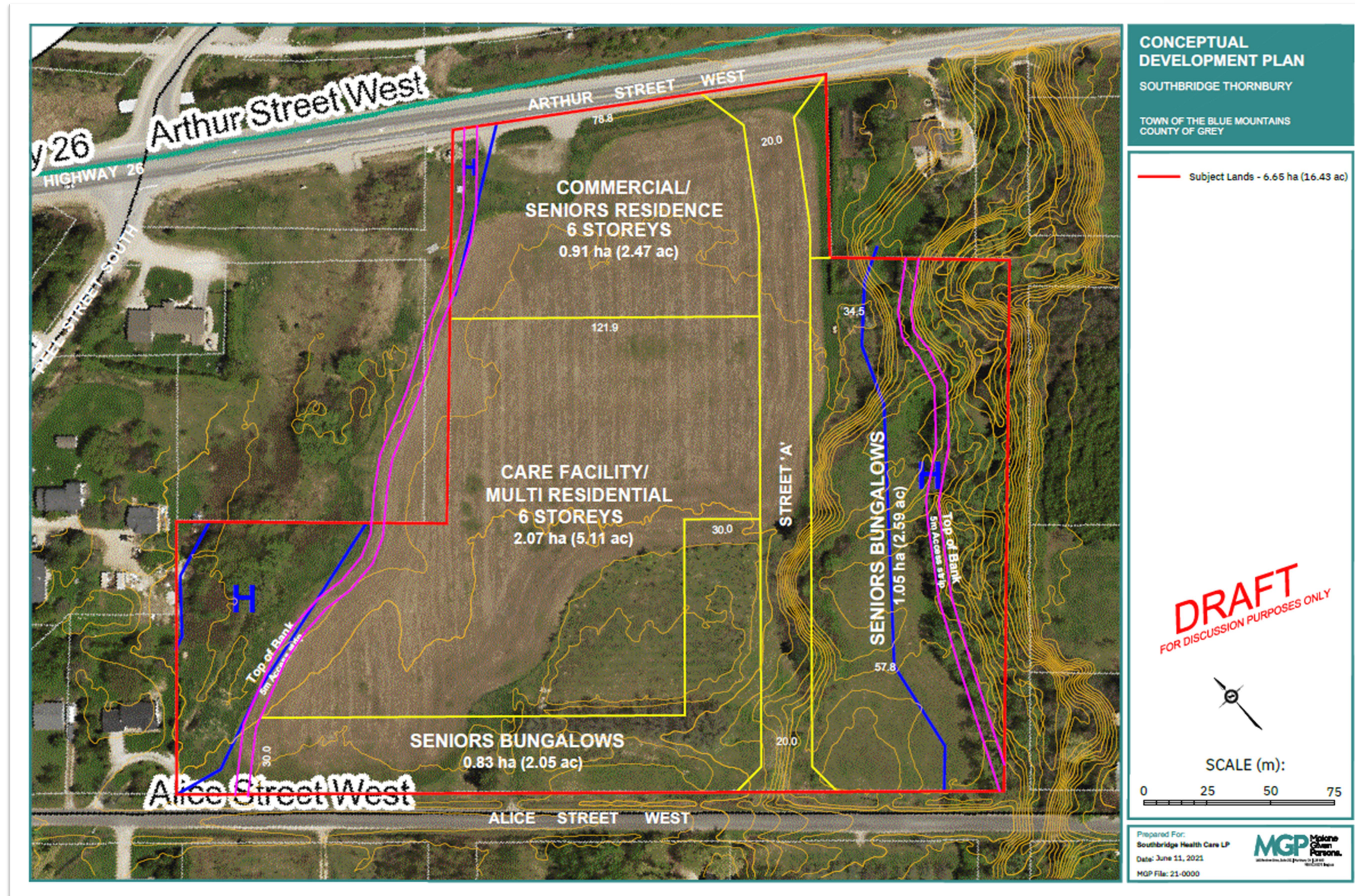
# // DEVELOPMENT PROPERTY



Satellite View of the Development Property



# // CONCEPTUAL DEVELOPMENT PLAN



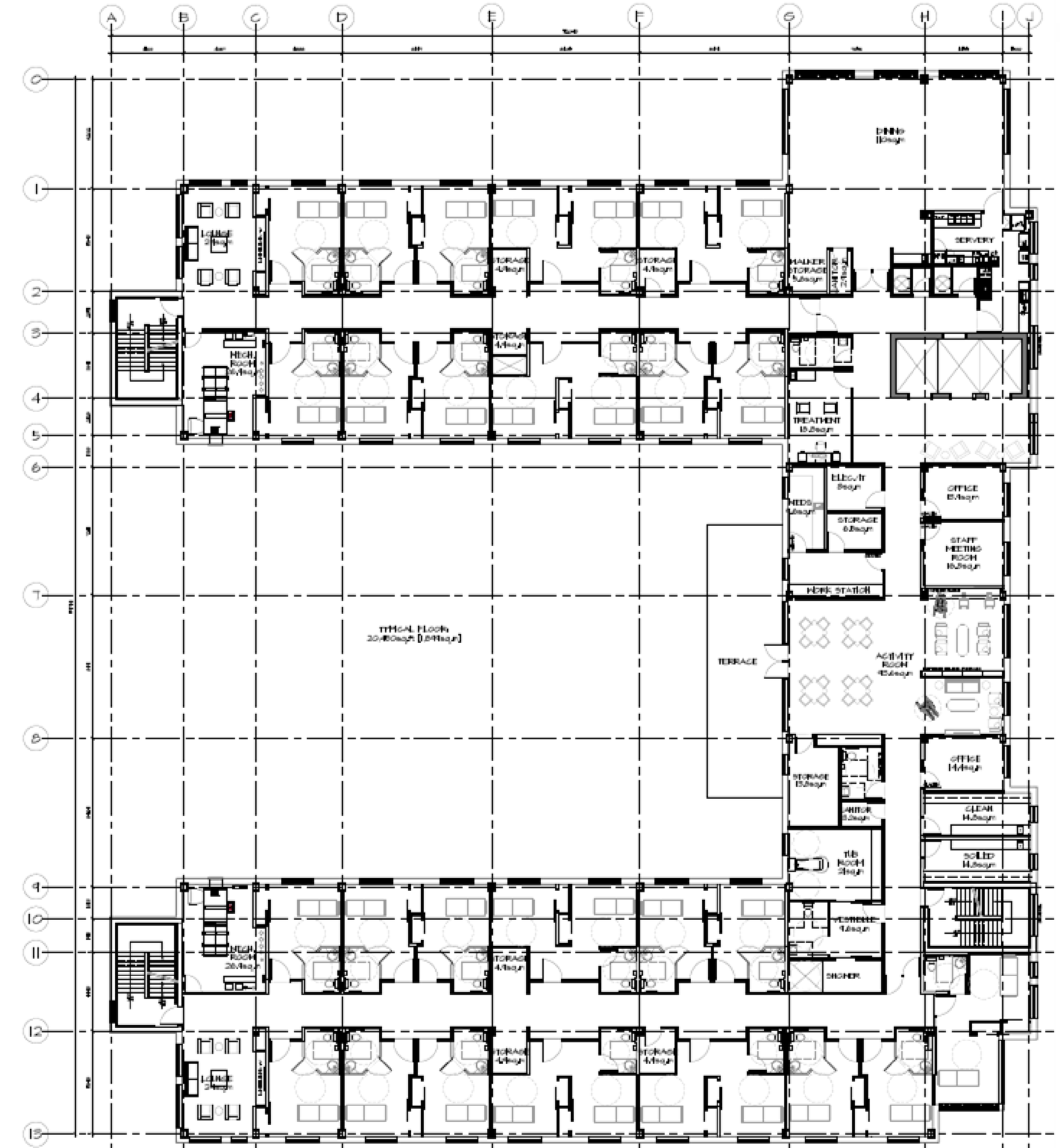
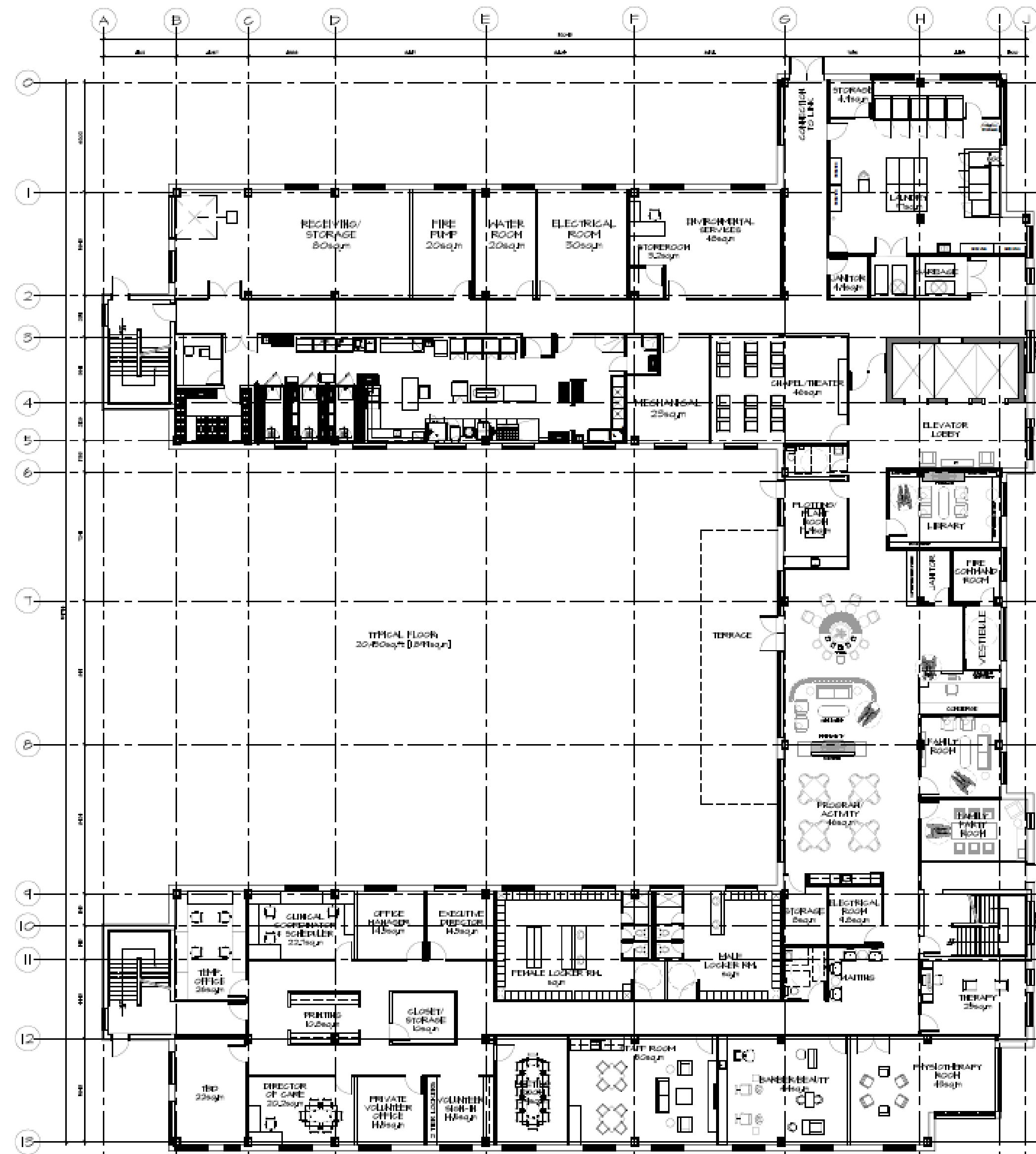


# // BUILDING CONCEPT





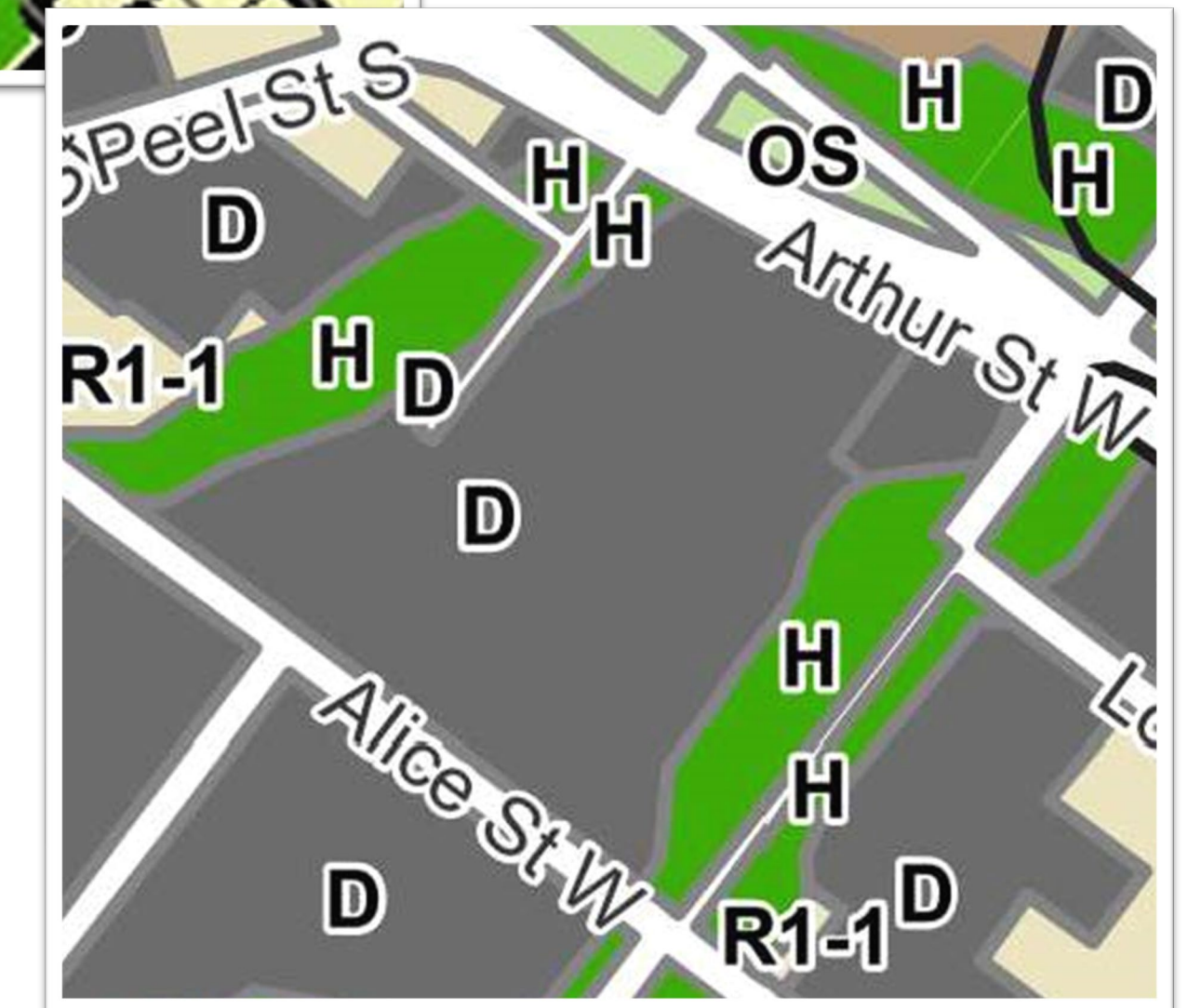
## // FLOOR PLANS





# // APPROVAL REQUIREMENTS

- The subject site is designated **Commercial Corridor** and zoned **‘D’ Development**.
- Establishing the proposed uses requires both **OPA** and **ZBLA**.
- A Minister’s Zoning Order will allow Southbridge to expedite the development process and bring a new long-term care home to Thornbury.





# // SUMMARY

- Southbridge is respectfully requesting support with the Minister's Zoning Order which will bring a new long-term care home to the Thornbury community.
- This continuum of care development will bring new jobs in nursing, care, foodservice, housekeeping, recreation, social work, maintenance, and many more.
- During the development period, numerous construction jobs will also become available to those in the community and surrounding areas.







# QUESTIONS?