

## **APPENDIX K**

### PUBLIC INFORMATION CENTRE #1 PRESENTATION MATERIALS AND REPORT





Long Point Road Sanitary Sewer  
and  
Craigleith Wastewater Treatment Plant Upgrades  
Municipal Class EA

Public Information Centre No. 1

April 28, 2022



WT INFRASTRUCTURE  
PRACTICAL INNOVATION

# PRESENTATION OUTLINE

Background

Existing Conditions

Project Scope

Problem Identification

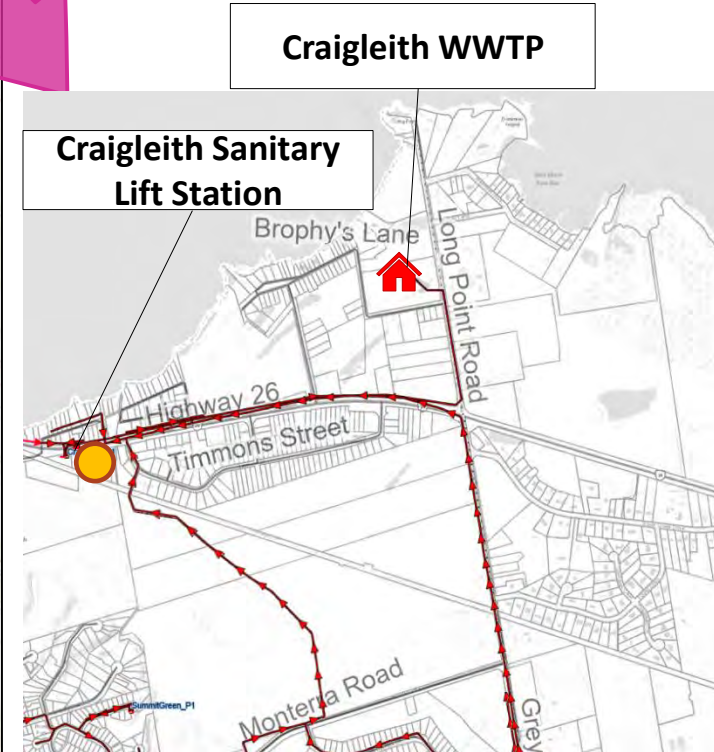
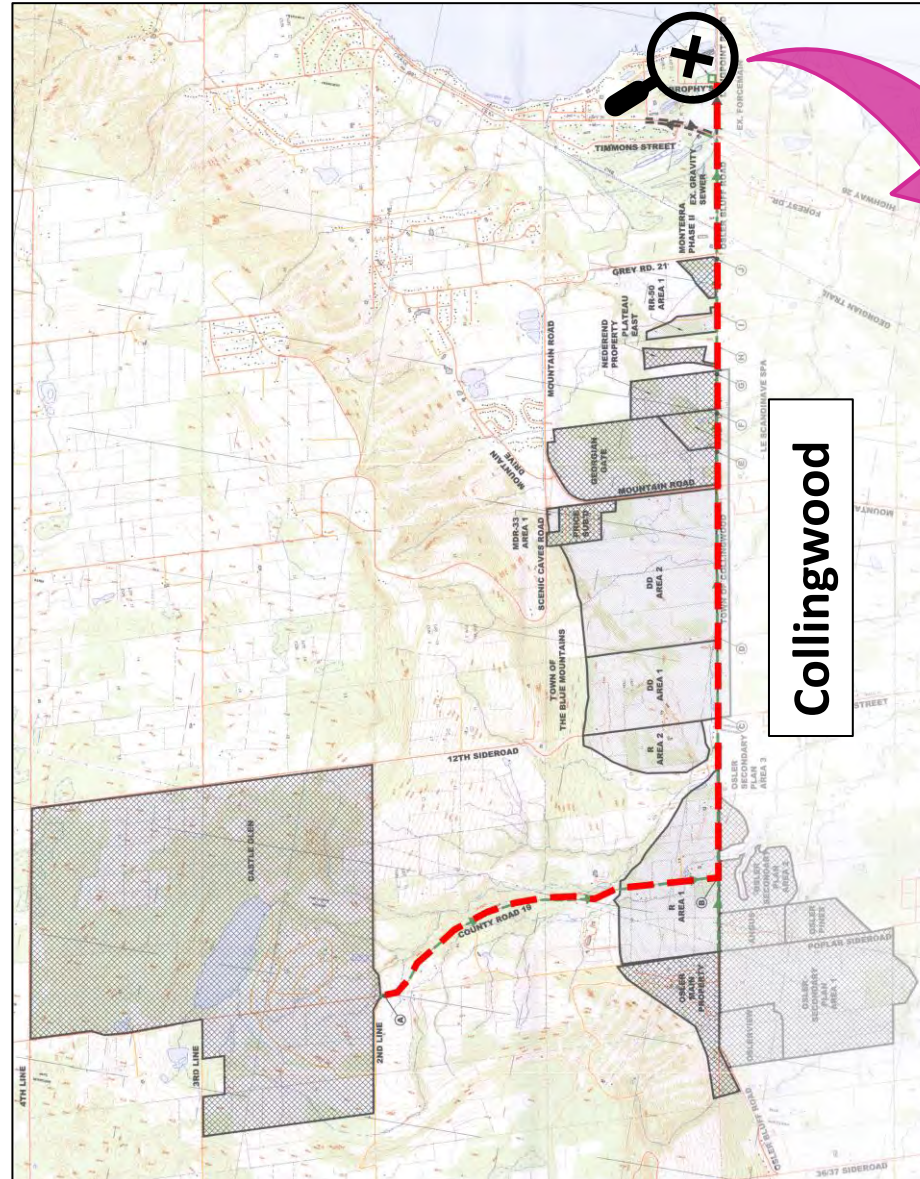
Potential Alternatives

Next Steps

Questions

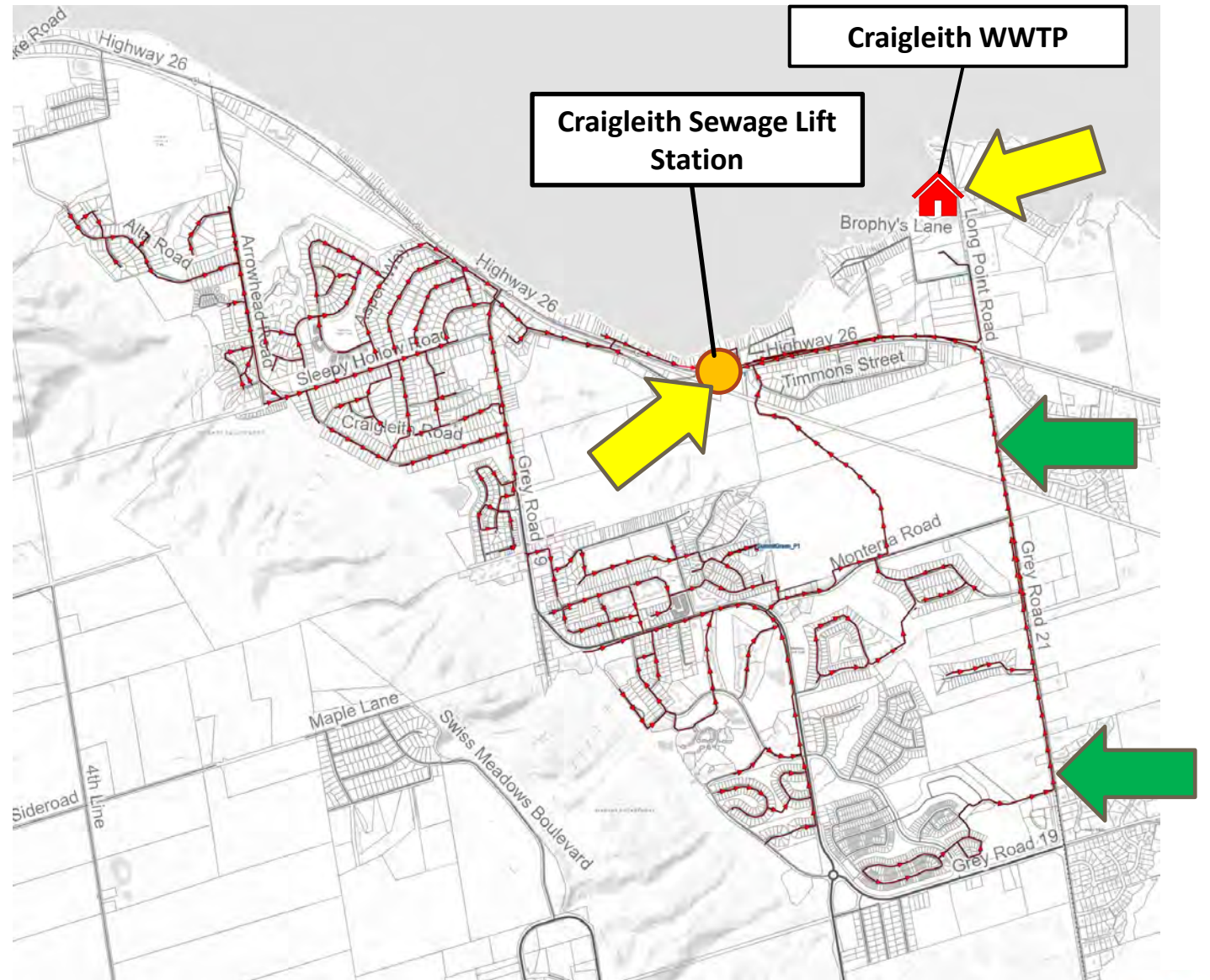
## BACKGROUND: CURRENT OPERATION

- Sanitary Sewer on County Road 21 discharges to Craigleith Sanitary Lift Station via gravity sewer.
- Land bordering Grey 21 is currently connected to just north of Grey 19.
- Additional planned/implemented projects including Price's Subdivision
- Future expansion potential up to Castle Glen development and Osler area.



## BACKGROUND: SANITARY SEWER OPERATION

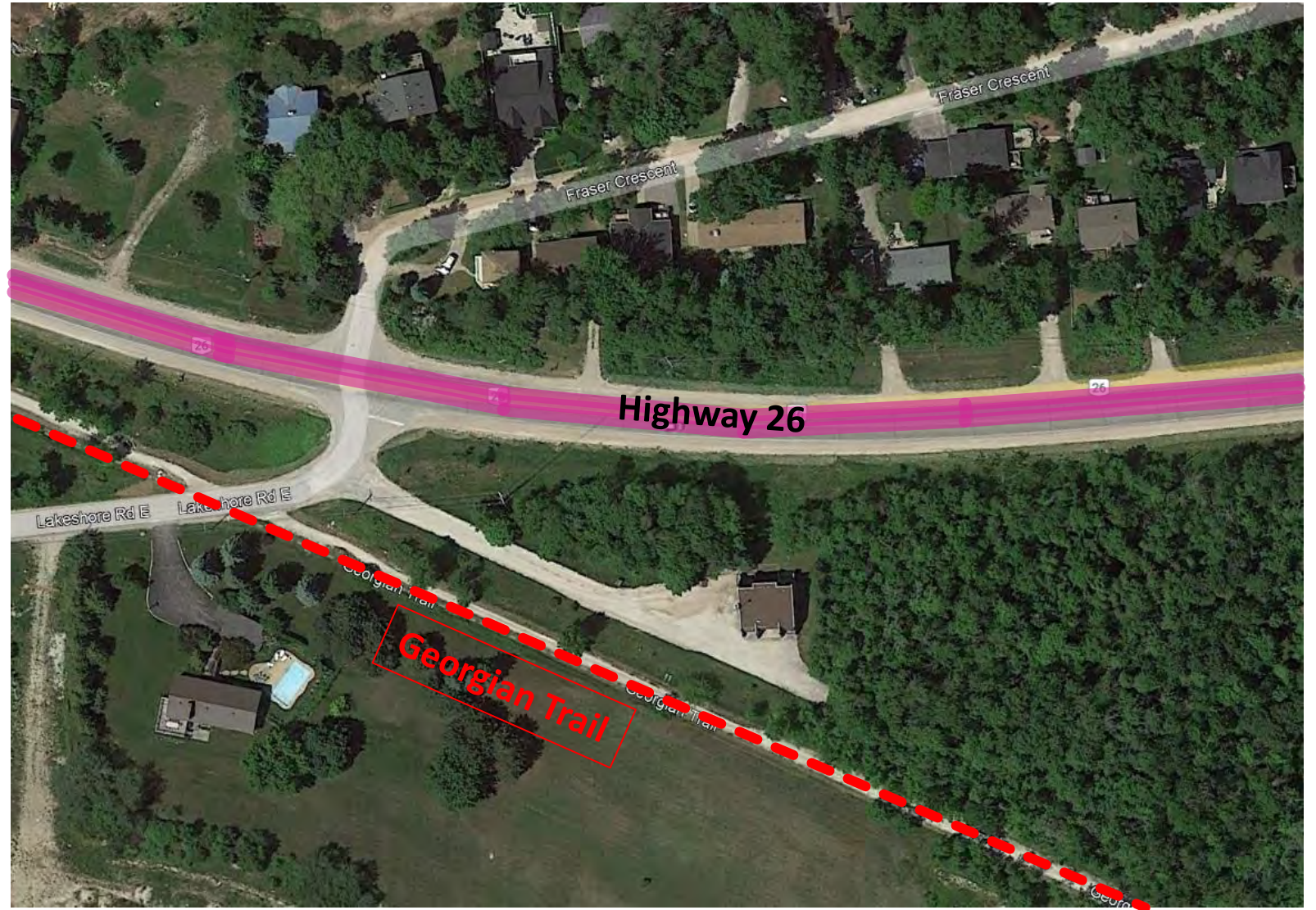
- 450mm existing sewer begins near County Road 19 and increases to a 525mm sewer on Grey Road 21 to Hwy 26.
- 300 mm sanitary sewer extends west to the existing Craigleith Sewage Lift Station.
- Craigleith Sewage Lift Station pumps wastewater to the Craigleith WWTP via dual force mains.
- Craigleith Main Lift Station includes an exterior septage and leachate receiving station.



## BACKGROUND: CRAIGLEITH SEWAGE LIFT STATION

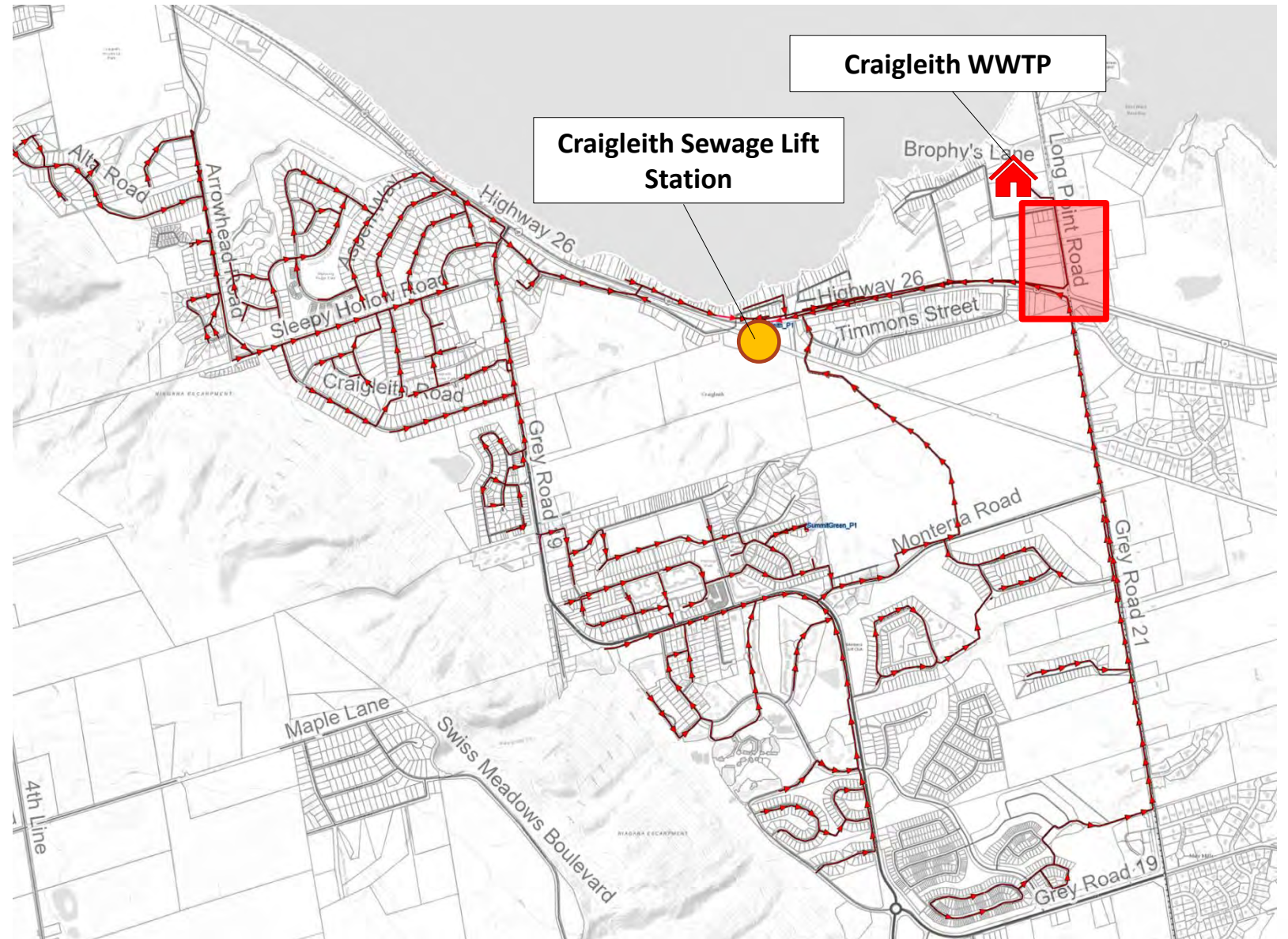
### Current Challenges

- Access to the facility
- Odour complaints
- Operational challenges
- Limited Peak Capacity



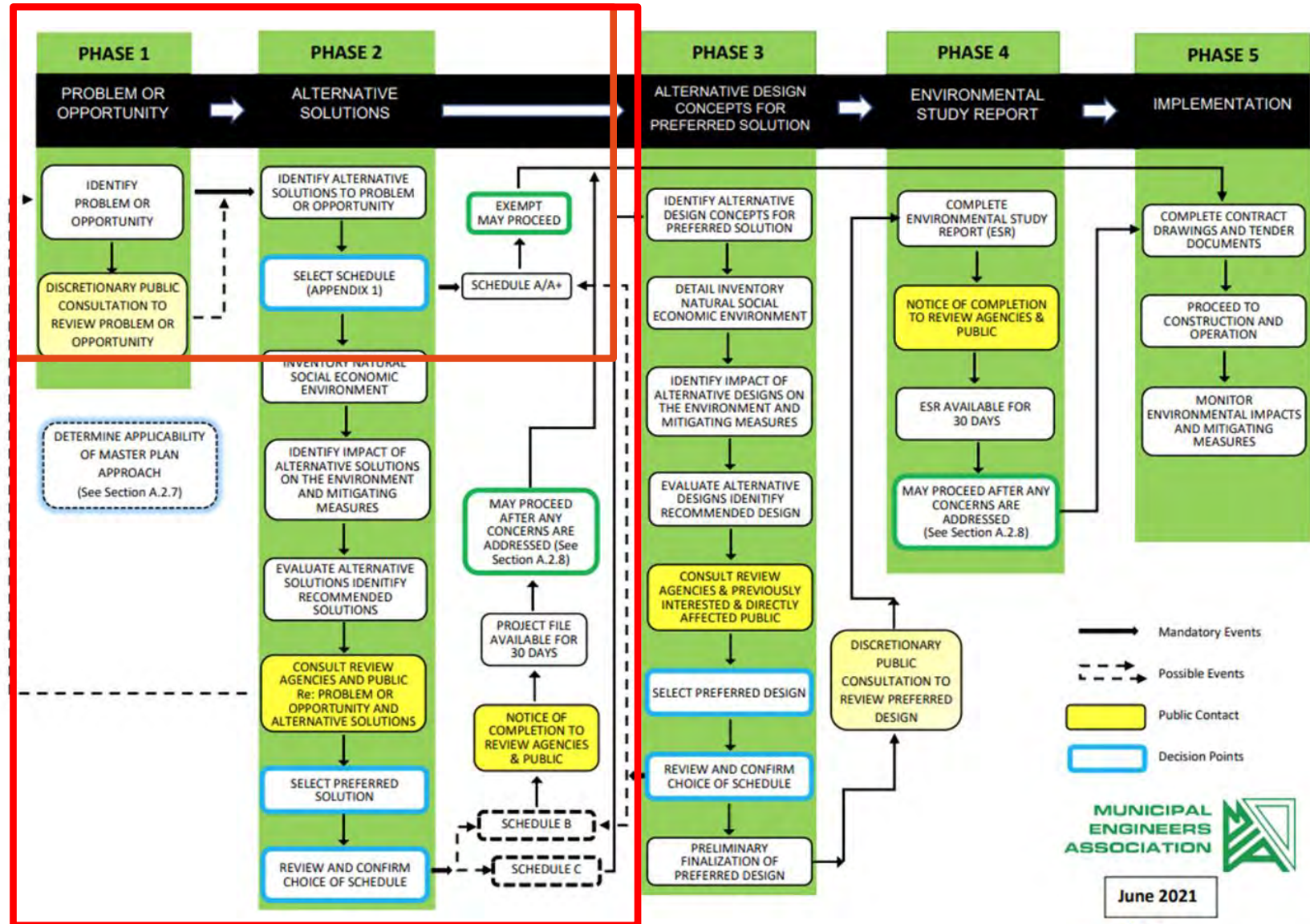
## PROJECT SCOPE

- Long Point Sanitary Sewer
  - Direct Connection to Craigleith WWTP
  - Improved efficiency
- Sanitary Pumping Station
  - Required to address elevation from new sanitary sewer
- Septage and Leachate Receiving Station
  - Address current challenges



# MUNICIPAL CLASS EA FLOWCHART

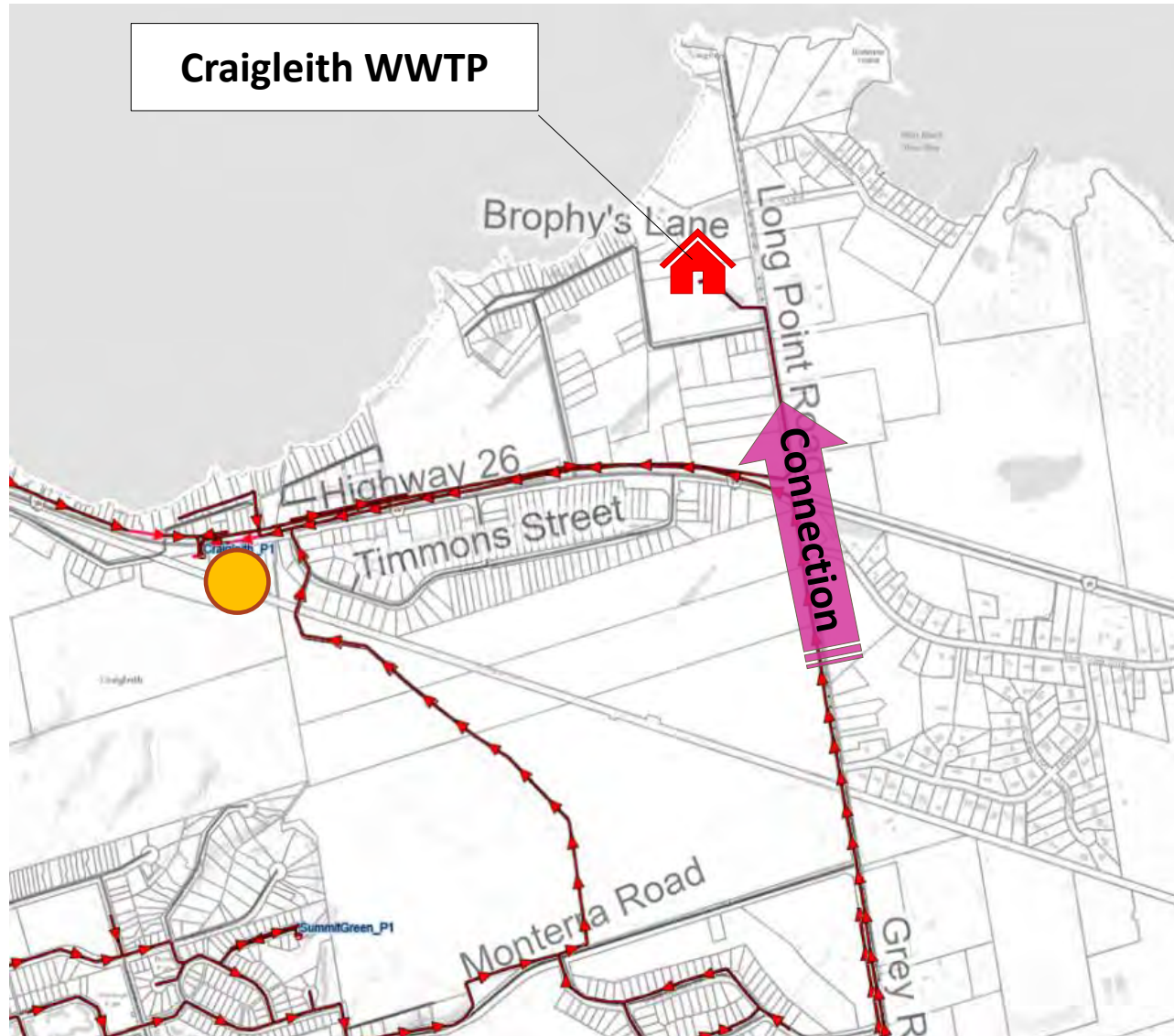
- The Class EA process
  - Decision-making process that all Ontario municipalities follow for building new infrastructure.
  - Includes mandated public consultation throughout the project



June 2021

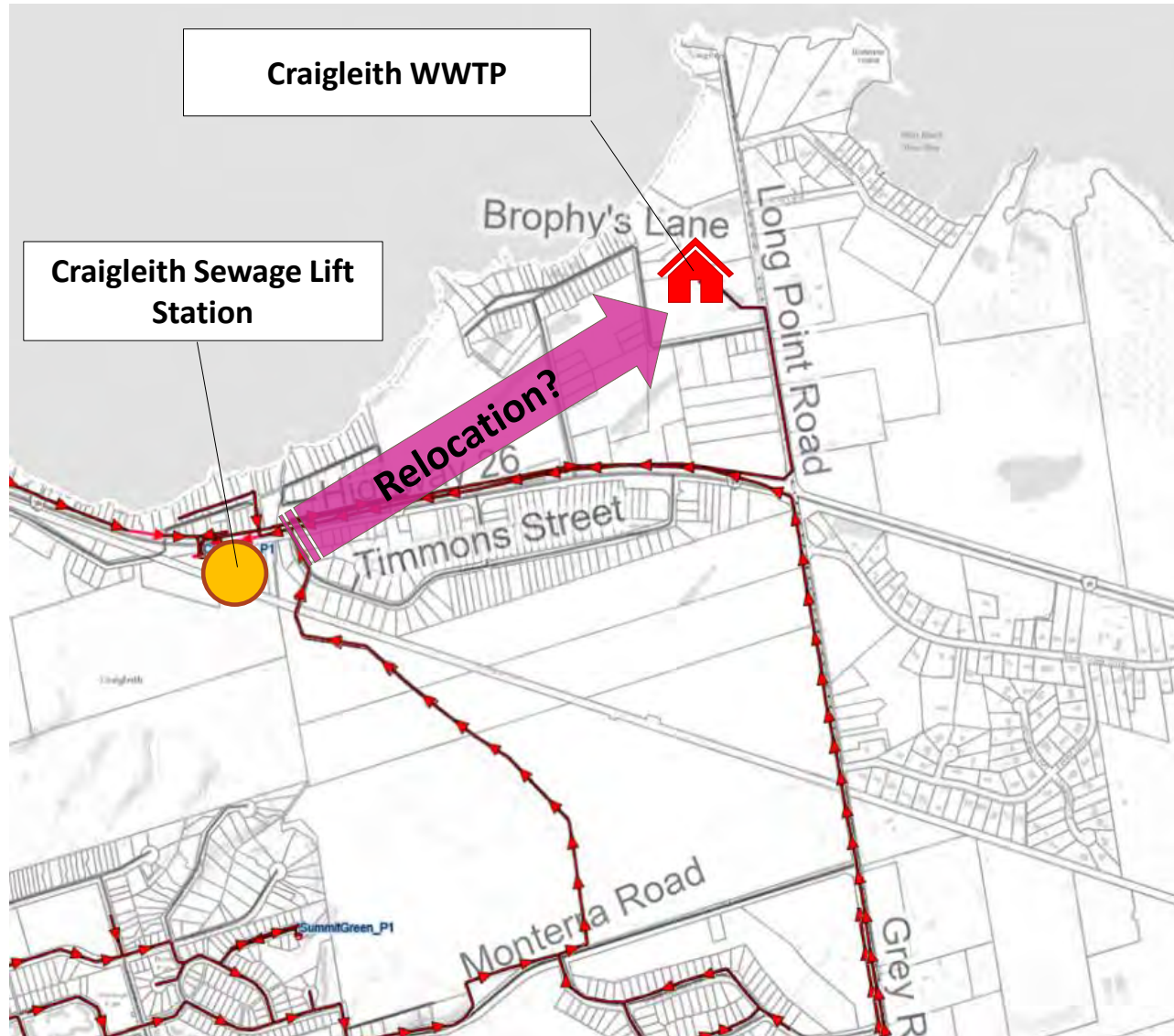


# LONG POINT SANITARY SEWER SCOPE



- Extension of the existing sewer to connect directly to the Craigleith WWTP
- The alignment of the new sanitary sewer would be shifted into the center of Long Point Road
- Project is **Schedule A/A+** as is in an existing utility corridor
- Project may proceed based on notification of public.

# SEPTAGE AND LEACHATE RECEIVING STATION SCOPE



- Alternatives to be considered:
  - A. Maintaining septage receiving at the Craigleith SLS
  - B. Moving septage receiving to the WWTP Extension of the existing sewer to the Craigleith WWTP
- Project is **Schedule A/A+** as the considered alternatives do not require land acquisition.
- Project does not require additional public notification to proceed.

## WHY MOVE IT?

- Addresses challenges with existing sites due to traffic, safety, odour, efficiency.

## WHAT IMPACT WILL MOVING IT HAVE?

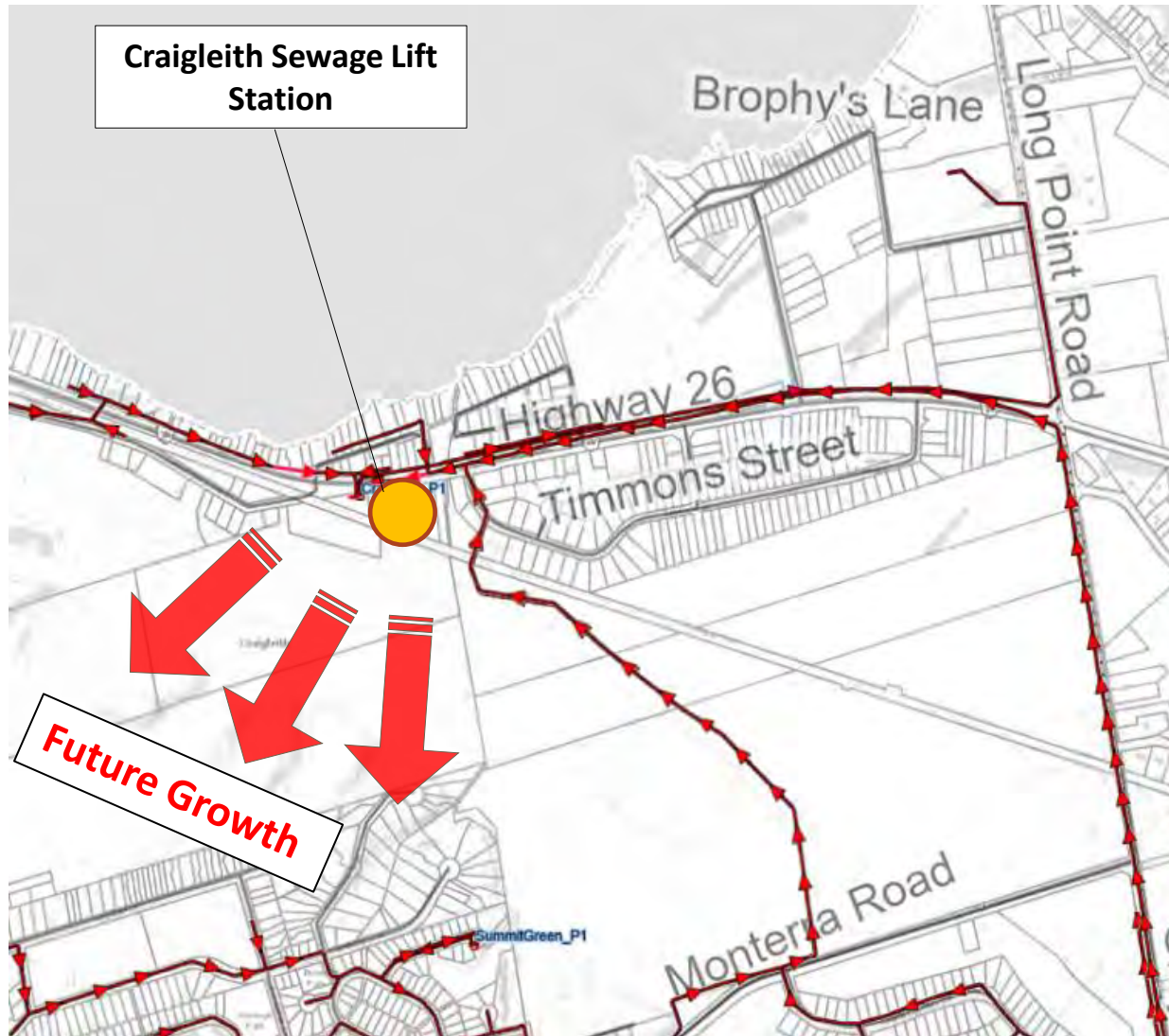
- Improvements to traffic, safety, odour, and security
- Increased truck traffic to the site along Long Point Road
- Additional concerns related to noise and odour

## MITIGATION

- Improving buffers, traffic management and enforcement, enclosed environment for discharge

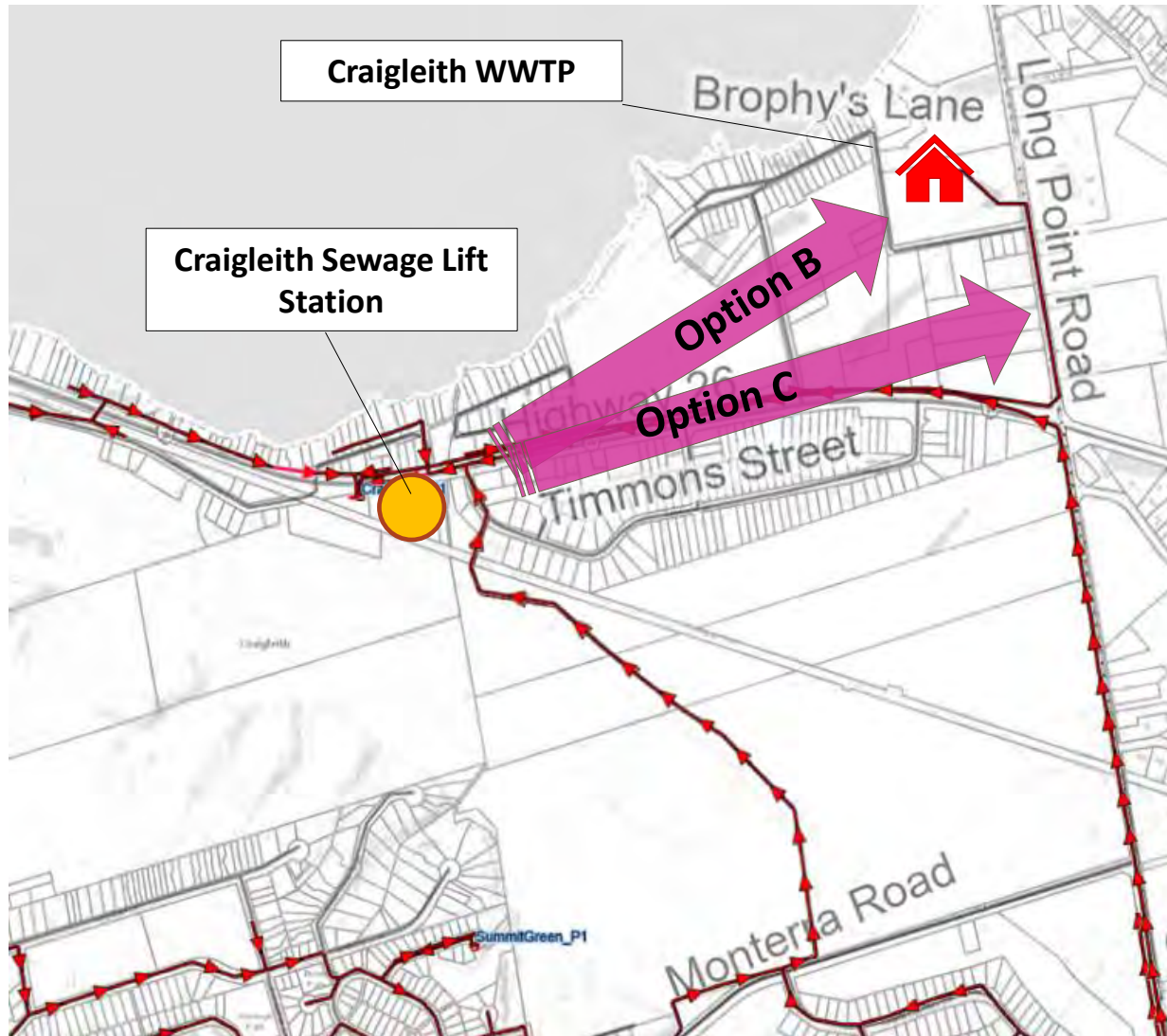
# SEPTAGE AND LEACHATE RECEIVING STATION

# SANITARY PUMPING STATION SCOPE – PROBLEM IDENTIFICATION



- Problem Identification
  - Existing lift station was not intended to convey County Rd 21 sanitary flow permanently.
  - Upstream capacity requirements due to future growth.
  - Operational Challenges

# SANITARY PUMPING STATION SCOPE - ALTERNATIVES



- Potential Alternatives
  1. Do Nothing
  2. New SPS at the Plant Site
  3. New SPS between Highway 26 and Plant Site
- **Schedule B** Class EA as it aims to construct a new pumping station or increase pumping station capacity in a new structure.
- Project requires public consultation throughout the study

# EVALUATION CRITERIA

## ENVIRONMENTAL



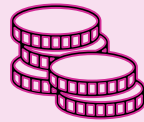
Potential impacts to the environment (i.e., resource depletion, natural heritage, tree removal, agricultural resources).

## SOCIAL



Potential impacts of the solution to the cultural sphere, residences, businesses, community, institutional, or recreational facilities.

## ECONOMIC



Capital costs associated with the solution

## TECHNICAL



Constructability, operability, construction risk and effectiveness of the solution.

## Evaluating the Options

With input from the public, key stakeholders, and review agencies, the team will develop and use criteria to evaluate the project alternatives

# KEY AREAS OF STUDY

## ■ TECHNICAL FEASIBILITY

- Confirm Gravity Flow and Elevations at the WWTP.
- Confirm Design Constraints (Utility Conflicts, Geotechnical Conditions, Space)

## ■ ENVIRONMENTAL/ SOCIAL IMPACTS

- Soil and Groundwater
- Habitat Assessment (as applicable)
- Archaeological Assessment
- Buffer Zones

## ■ ECONOMIC IMPACTS

- Capital Cost
- Operating Cost
- Deferral of other investments

## ■ MITIGATION MEASURES

- Construction Techniques
- Buffer Management
- Technical Solutions

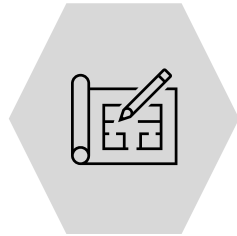
# NEXT STEPS



GENERATION AND  
EVALUATION OF  
ALTERNATIVES



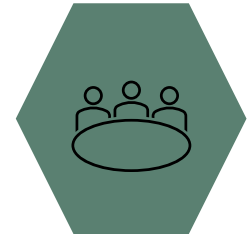
ENVIRONMENTAL  
INVESTIGATIONS



CONCEPTUAL DESIGN  
DEVELOPMENT



SELECTION OF THE  
PREFERRED  
ALTERNATIVE(S)



PUBLIC INFORMATION  
CENTRE No.2

# Thank you for your time Questions?

For additional project information and updates go to:  
[www.thebluemountains.ca/LongPointRoadEA](http://www.thebluemountains.ca/LongPointRoadEA)

---

**Jamie Witherspoon, P.Eng. – President  
WT Infrastructure Solutions Inc.**

[jamie.witherspoon@wtinfrastructure.ca](mailto:jamie.witherspoon@wtinfrastructure.ca)





# Staff Report

---

## Operations – Water & Wastewater Services

**Report To:** Committee of the Whole Meeting  
**Meeting Date:** June 21, 2022  
**Report Number:** CSOPS.22.055  
**Title:** Craigleith WWTP Sewage Pumping Station Class EA PIC 1 Follow-up  
**Prepared by:** Allison Kershaw, Manager of Water & Wastewater Services

---

### A. Recommendations

---

THAT Council receive Staff Report CSOPS.22.055, entitled “Craigleith WWTP Sewage Pumping Station Class EA PIC 1 Follow-up for their information”.

### B. Overview

---

The purpose of this Staff Report is to provide Council with a summary of the comments and feedback that was received through the Craigleith WWTP Sewage Pumping Station Class EA Virtual Public Information Centre (PIC) 1 held on April 28, 2022.

### C. Background

---

The Town of The Blue Mountains has initiated a Municipal Class Environmental Assessment to evaluate and select the preferred solution to address the need for the extension of a gravity sewer and associated sewage lift station at the Town’s Craigleith Wastewater Treatment Plant (CWWTP). Additionally, an assessment will be complete to determine if the septage and leachate receiving station should be relocated to the CWWTP. The proposed work will include the following:

- Extending the sewage collection system from the existing gravity sewer on the southern boundary of the intersection of Grey Road 21 and Highway 26 north within the Long Point Road allowance to the CWWTP.
- Development of solutions for a new lift station to raise the wastewater from the new sanitary sewer into the treatment plant.
- Developing solutions for the relocation of the septage and leachate receiving station from its current location on Lakeshore Road to the CWWTP site.
- Design of all facilities to accommodate imminent near-term and build out needs.

The gravity sewer along Long Point Road is considered a Schedule “A” project and may proceed; however, the pumping station and septage receiving station at the CWWTP on Long Point Road will be considered a Schedule “B” project.

The proposed solutions will be evaluated considering natural, cultural, technical, economic and environment. The preferred solution will be selected in consultation with regulatory agencies and the public.

## **D. Analysis**

---

At the CWWTP Sewage Pumping Station Class EA Virtual PIC 1 held on April 28 2022, residents brought forward with a number of questions, inquiries and concerns including;

### **1. Extension of sanitary services**

Multiple residents asked about the possibility of sanitary sewer servicing on unserved streets in the area around the CWWTP.

**Town Response** – This project is not intended to directly result in extensions of sanitary servicing, but it may permit the future extension of services and that the standard approach is to coordinate with the Town and your neighbours to proceed to request a sewer extension for Council that would then be paid by the residents benefiting provided it meets the affordability criteria.

### **2. Potential for inclusion of failsafe measures to prevent sewage backups**

A resident inquired about the inclusion of failsafe measures being included in the design of the new pumping station.

**Town Response** – The Town understands the issues with the current lift station, and this seems like an excellent opportunity to build a facility that will work much better. The new lift station will be designed with future growth and the impacts of climate change incorporated.

### **3. Likelihood of increased odours caused by the proposed project**

A resident asked how the Town will ensure that the current odour issues at the Craigeith Main Lift Station will not become an issue at the CWWTP.

**Town Response** – The area surrounding the existing Craigeith Main Lift Station is periodically exposed to increased odour levels during septage and leachate receiving as the unloading zone is not in an enclosed facility. If the facility is moved to the CWWTP, the unloading zone could be moved to an enclosed location to minimize the amount of odour that could travel to the surrounding area. An enclosed facility would also allow for more odour-control measures to be put in place.

### **4. Is it possible to redirect the flow from the sanitary sewer that goes through the Timmons Easement to the sanitary sewer on Grey Road 21 and abandon the Timmons easement sewer?**

**Town Response** – Staff have considered this option, however the elevation of the sewer pipe invert at the southern end of the Timmons easement is too low (182.2 meters) in comparison

to the pipe invert of the sanitary sewer on Grey Road 21 (184 meters). If the gravity sewers were redirected, an additional lift station would be required somewhere between the Timmons easement and Grey Road 21 to lift the flow up to get into Grey Road 21 sewer. Additionally, the sanitary sewer on Grey Road 21 is not sized to handle the volume of the flow that would be directed towards it. The Timmons easement sewer is 675mm in diameter. The Grey Road 21 sewer is 525mm, and it drops down to 300mm pipe.

When the collection system was first established for the Craigleith sewer shed, the location of the Craigleith Main Lift Station was determined to allow the greatest number of connections, utilizing only one pumping station. The sewer was located in the Timmons easement because it was the shortest way to get the sewage to the lift station, then onwards to the plant.

A second PIC will be held to present the assessment and evaluation of the alternative solutions to the public to elicit comments and feedback.

## **E. Strategic Priorities**

---

### **1. Communication and Engagement**

We will enhance communications and engagement between Town Staff, Town residents and stakeholders

### **2. Organizational Excellence**

We will continually seek out ways to improve the internal organization of Town Staff and the management of Town assets.

### **3. Community**

We will protect and enhance the community feel and the character of the Town, while ensuring the responsible use of resources and restoration of nature.

### **4. Quality of Life**

We will foster a high quality of life for full-time and part-time residents of all ages and stages, while welcoming visitors.

## **F. Environmental Impacts**

---

Significant alterations to municipal infrastructure require a Class Environmental Assessment. The Class Environmental Assessment takes into consideration the impacts and the solutions on the natural and cultural environment. The level of impacts in each option are weighed against other impacts such as cost. Options for mitigating natural and cultural impacts (such as historic significance) are also put forth.

## **G. Financial Impacts**

---

This EA was approved in the amount of \$385,000 to be fully funded from Wastewater Development Charges.

## **H. In Consultation With**

---

Jason Petznick, Communications Coordinator

Mark Service, Wastewater Supervisor

## **I. Public Engagement**

---

The topic of this Staff Report has been the subject of a Public Meeting and/or Public Information Centre which took place on **April 28, 2022**. Those who provided comments at the Public Meeting and/or Public Information Centre, including anyone who has asked to receive notice regarding this matter, has been provided notice of this Staff Report.

- April 7 & April 21, 2022, Notice of Study Commencement and Notice of PIC 1 advertised in Collingwood Connection.
- April 14, 2022, Notice of Study of Commencement and Notice of PIC 1 mailed to Stakeholders.
- April 12, 2022, Committee of the Whole – Initial staff report [CSOPS.22.033](#) with recommendation to proceed to public consultation.
- April 25, 2022, Council – Recommendations from April 12, 2022, Committee of the Whole confirmed.
- April 28, 2022, Virtual PIC 1 to be held.
- June 21, 2022, Committee of the Whole – Follow-up report to the Public Meeting, attaching comments received in response to the Public Meeting;

Any comments regarding this report should be submitted to Allison Kershaw, Manager of Water & Wastewater Services [managerwww@thebluemountains.ca](mailto:managerwww@thebluemountains.ca).

## **J. Attached**

---

1. CWWTP Sewage Pumping Station Class EA PIC 1 Follow-up Questions and Concerns

Respectfully submitted,

Allison Kershaw,  
Manager of Water & Wastewater Services

Shawn Carey  
Director Operations

For more information, please contact:  
Allison Kershaw, Manager of Water & Wastewater Services  
[managerwww@thebluemountains.ca](mailto:managerwww@thebluemountains.ca)  
519-599-3131 extension 226

### Report Approval Details

Document Title:	CSOPS.22.055 Craigleith WWTP Sewage Pumping Station Class EA PIC 1 Follow-up.docx
Attachments:	- CSOPS.22.055 Attachment 1.pdf
Final Approval Date:	May 20, 2022

This report and all of its attachments were approved and signed as outlined below:

**Allison Kershaw - May 20, 2022 - 9:29 AM**

**Shawn Carey - May 20, 2022 - 9:40 AM**