



Mill St. Sanitary Pumping Station and Bay Street Reconstruction

Public Information Centre No. 2

December 17th, 2024



PRESENTATION OUTLINE

Council Direction

Project Update

Points of Clarification

Sections and Renderings

Project Impacts

Schedule and Next Steps

Questions

COUNCIL DIRECTION

- Council pulled the report and Committee motion for further discussion at their meeting on Monday, July 15. Following a thorough discussion, Council voted against the motion directing staff to provide an additional staff report with a complete review, including costs, of the forcemain alignment options. In a separate decision, Council voted to direct staff to proceed with:
 - The design of Bay Street East including sanitary forcemain, sanitary sewer, storm sewer and watermain by undertaking a preliminary design of a one-way street cross section with an alignment which minimizes the impact to the existing streetscape while not compromising safety or the needed infrastructure. The preliminary design is to include:
 - Stormwater bike safe grates/basins within the asphalt and/or semi-mountable curb
 - No sidewalks, multi-use trail, or drainage ditches
 - The design of Grey Street beginning south from Bay Street East to Highway 26 in a complimentary manner to Bay Street East cross-section from Highway 26 to the Wastewater Treatment Plant with restoration to the Town standard local urban 20m ROW with no parking cross-section with 7.5 metre asphalt width and 2.7 metre multi-use trail including the installation of the outfall sanitary forcemain, storm sewer and watermain

PROJECT UPDATE – WHAT HAS AND HASN'T CHANGED



Growth in the collection system – Campus of Care, Thornbury West, Lora Bay and growth within the existing community limits. **The cancellation of the Campus of Care Project does not eliminate the need or urgency for the Mill St. SPS upgrades and new forcemain.**



Existing Infrastructure is reaching end of life (Sanitary sewer is leaky, Nineteen watermain breaks or incidents in recent years. (1 in 2013, 7 in 2015, 1 in 2016, 1 in 2017, 2 in 2019, 2 in 2020, 3 in 2023, 2 in 2024)



Mill St. Sanitary Pumping Station has reached capacity resulting in situations where flooding has been avoided by trucking wastewater away from the pumping station during peak events.

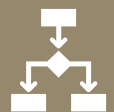
WHAT WE'VE HEARD



Local Residents feedback regarding forcemain alignment, removal of trees, impact on neighbourhood character, impact of development on community



July 15, 2024 – Council Direction to develop design based on one-way street with forcemain, sanitary, storm and water excluding multi-use trail or sidewalk.



Concerns related to transparency and process regarding route selection and consultation process.

WHAT HAS BEEN DONE

→ One-way St.

One way from Mill St. to Grey St.
6 m wide roadway (similar to current)



Alignment within Corridor

Road is on south side of corridor.
Similar to current alignment.



Project Staging

We've evaluated ways to keep the project schedule and minimize the impacts on residents.



Tree Removal and Protection

We've evaluated the trees and root zones with the objective of minimizing tree removal requirements.



Additional Studies

A traffic study was completed on the Bay St. E. project.

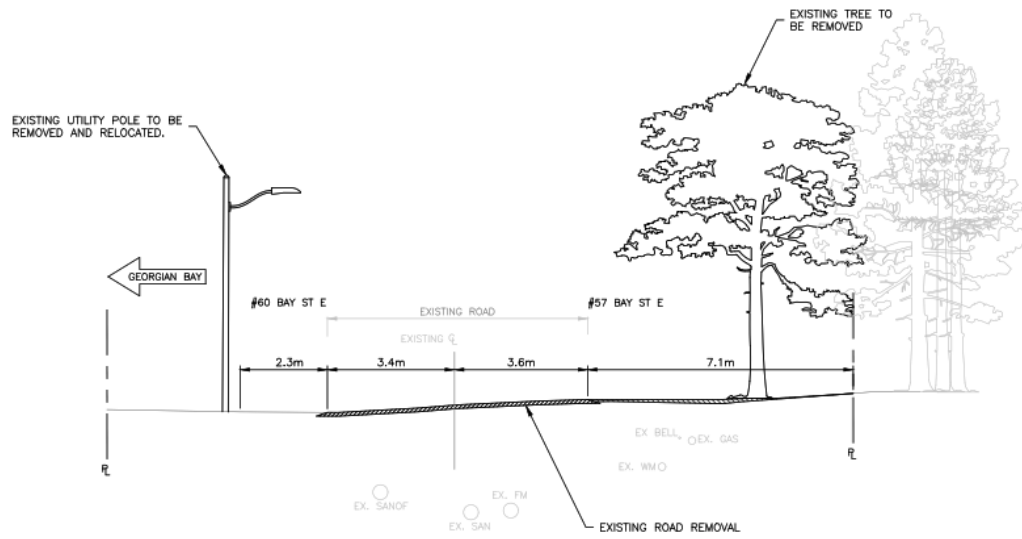


Utility Coordination

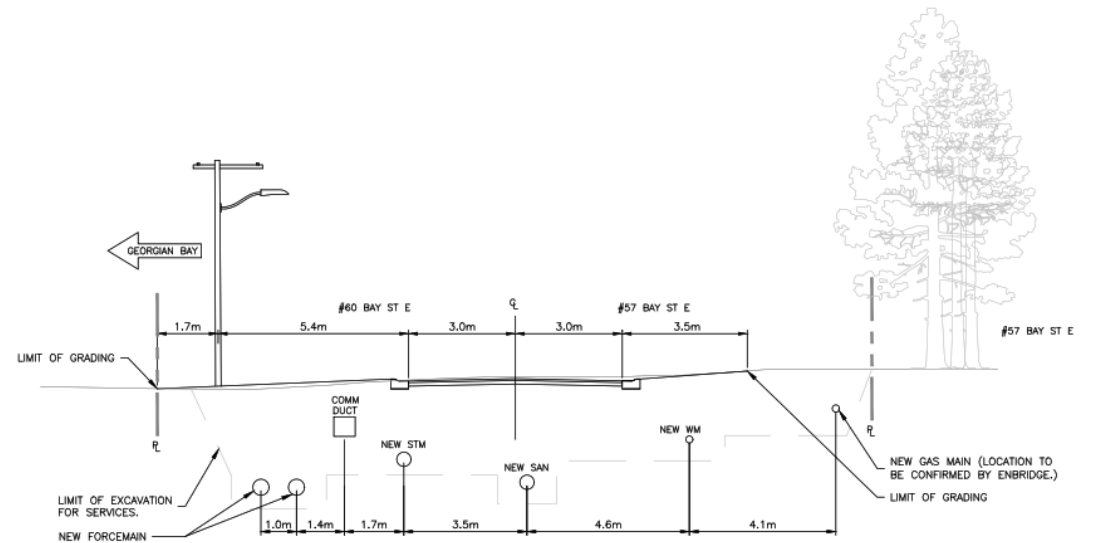
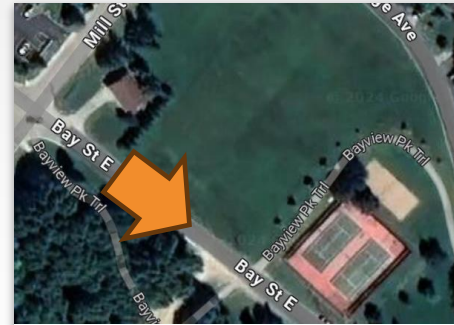
Hydro and overhead utilities to be moved to south side of ROW.

POINTS OF CLARIFICATION

- Impacts on Tennis Court
 - The Tennis Court is outside of the Town Right-of-way. No work is proposed outside of the right-of-way throughout the project. Some drainage improvements will be made around Tennis Court.
- Full Tree Removal
 - Trees are proposed to be removed where the tree or root zone is significantly impacted by construction.
 - Trees are defined as single stemmed perennial woody plant that has reached or can reach a height of at least 4 m at physiological maturity.
- Necessity of Stormwater Management
 - When a road is improved, it is the responsibility of the Town to address their stormwater on their property. Leaving road drainage to adjacent properties would be a liability to the Town.
- Infrastructure Depth
 - Some comments have indicated sewer/forcemain depths of 10 m (30 ft).
 - The deepest infrastructure will be at Mill St. end for pumping station. Most utilities will be less than 4 m (12 ft) deep.
- Parking
 - Many concerns were raised related to loss of parking.
 - Parking is not permitted on the road or right-of-way boulevard as per By-law 2022-49.
 - With 6 m roadway, no parking will be permitted to allow for emergency service vehicle progression.
- Design and Document Accuracy
 - Many comments regarding unknowns and lack of details.
 - Previous meetings were at project initiation and conceptual design.
 - Current documents are 60% design.



EXISTING CROSS-SECTION – 57 BAY ST. E.



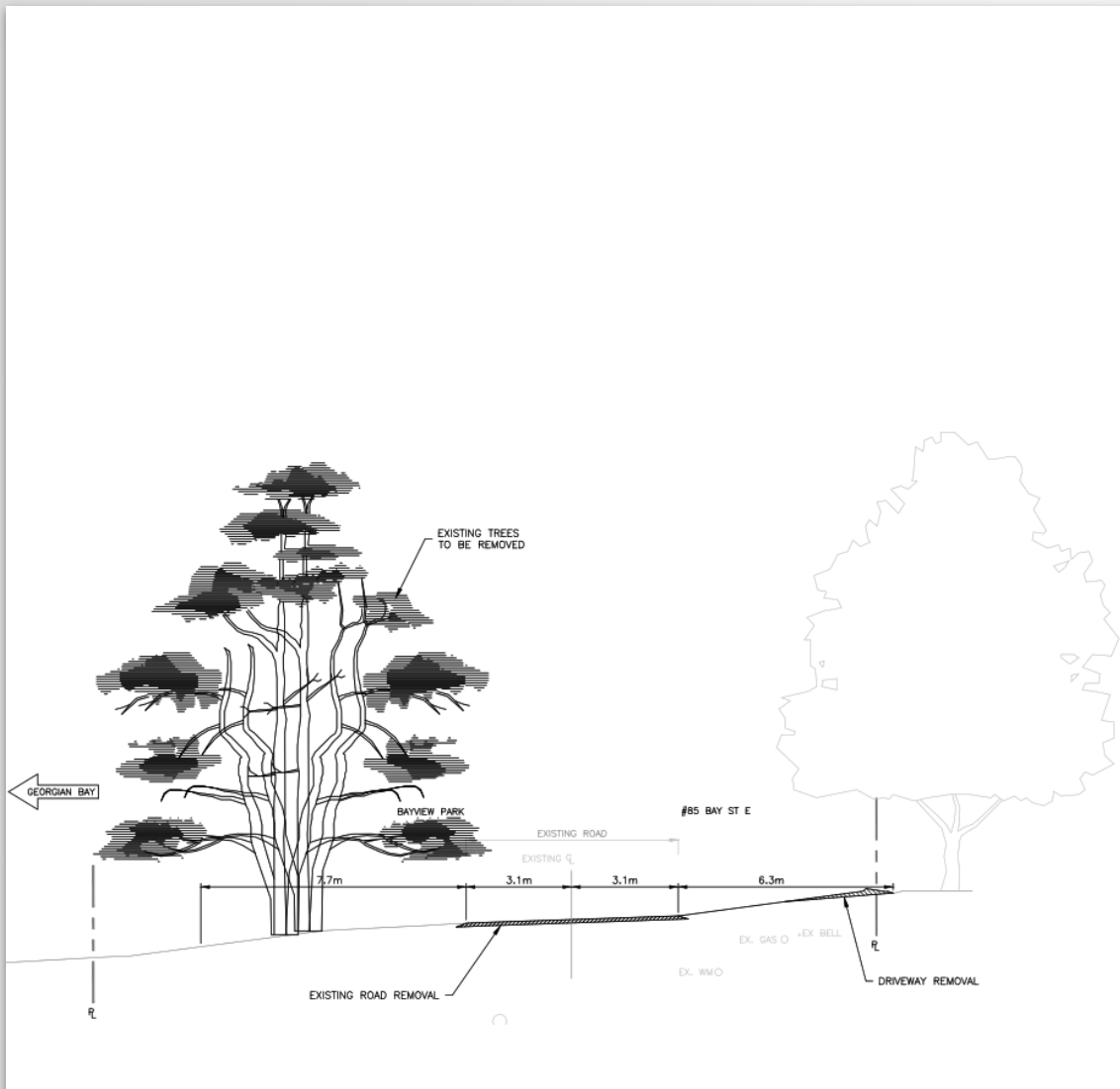
PROPOSED CROSS-SECTION – 57 BAY ST. E.



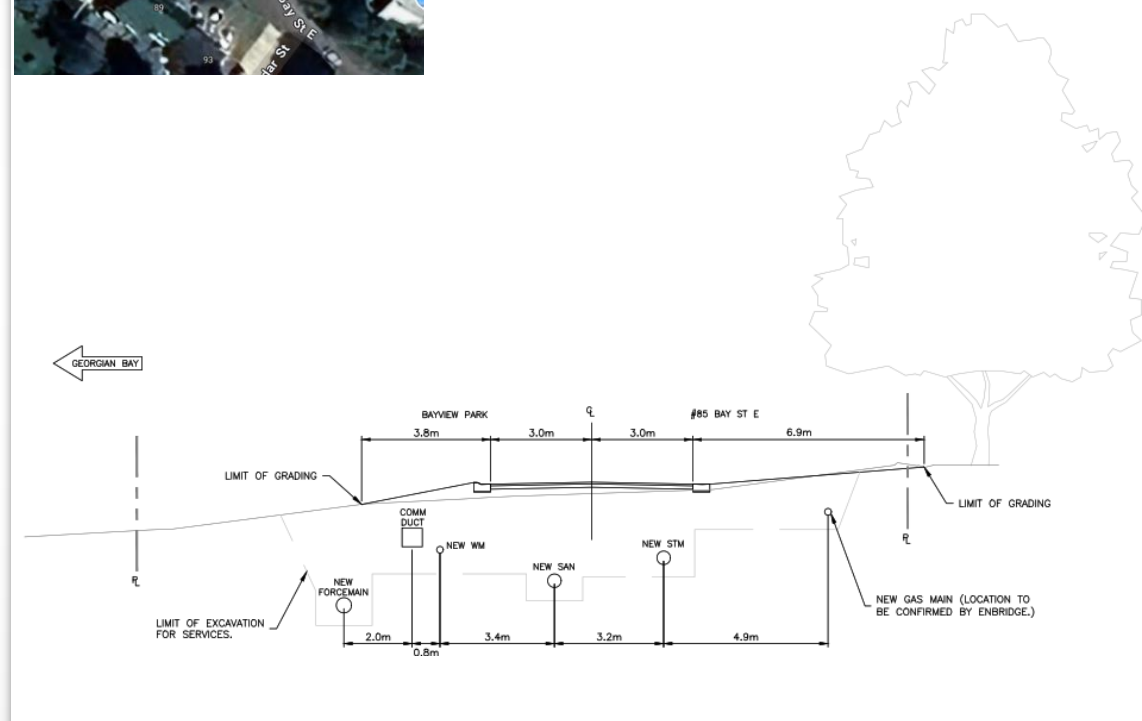
EXISTING CONDITION – 57 BAY ST. E.



PROPOSED CONDITION – 57 BAY ST. E.



EXISTING CROSS-SECTION – 85 BAY ST. E.



PROPOSED CROSS-SECTION – 85 BAY ST. E.

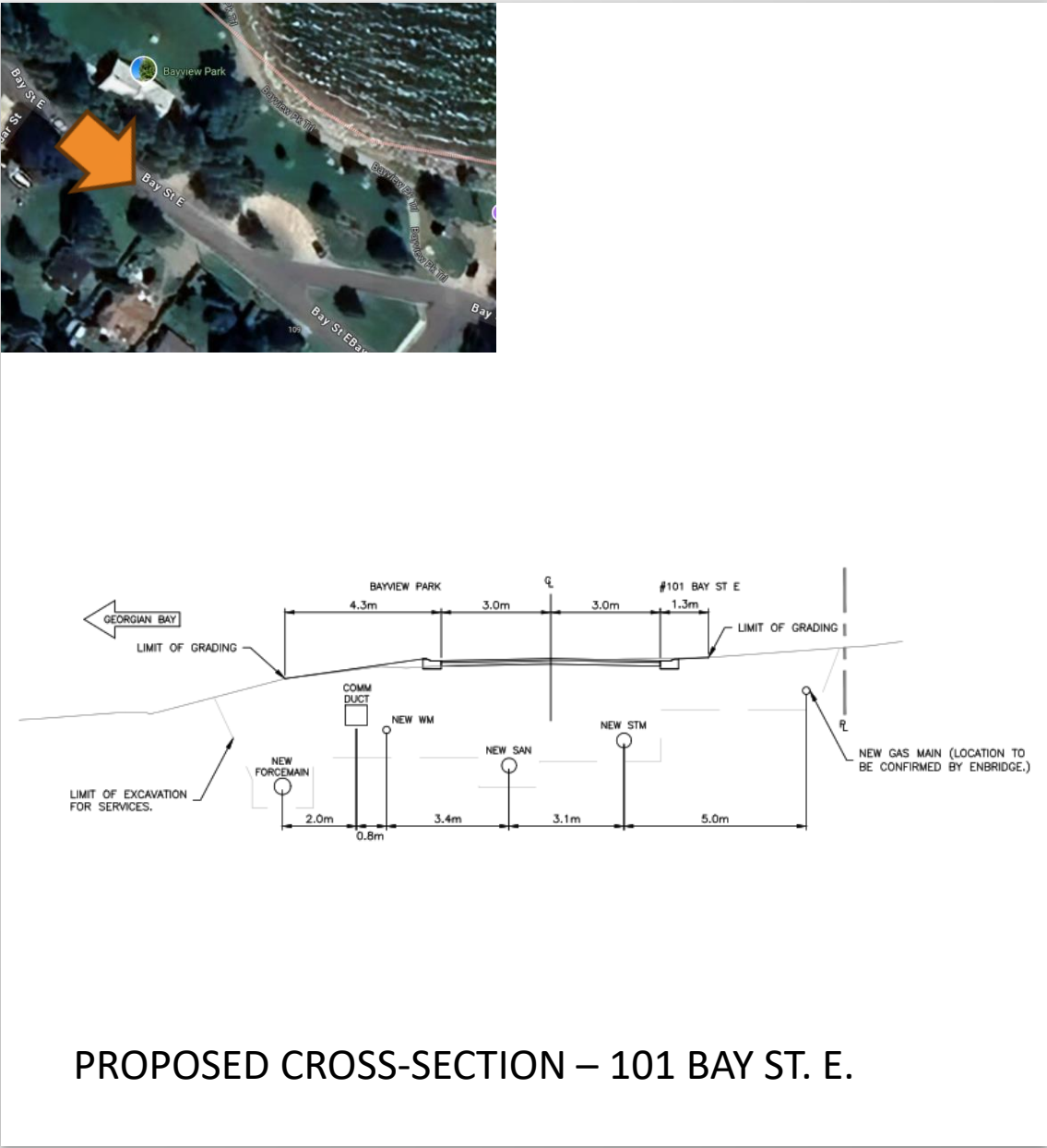
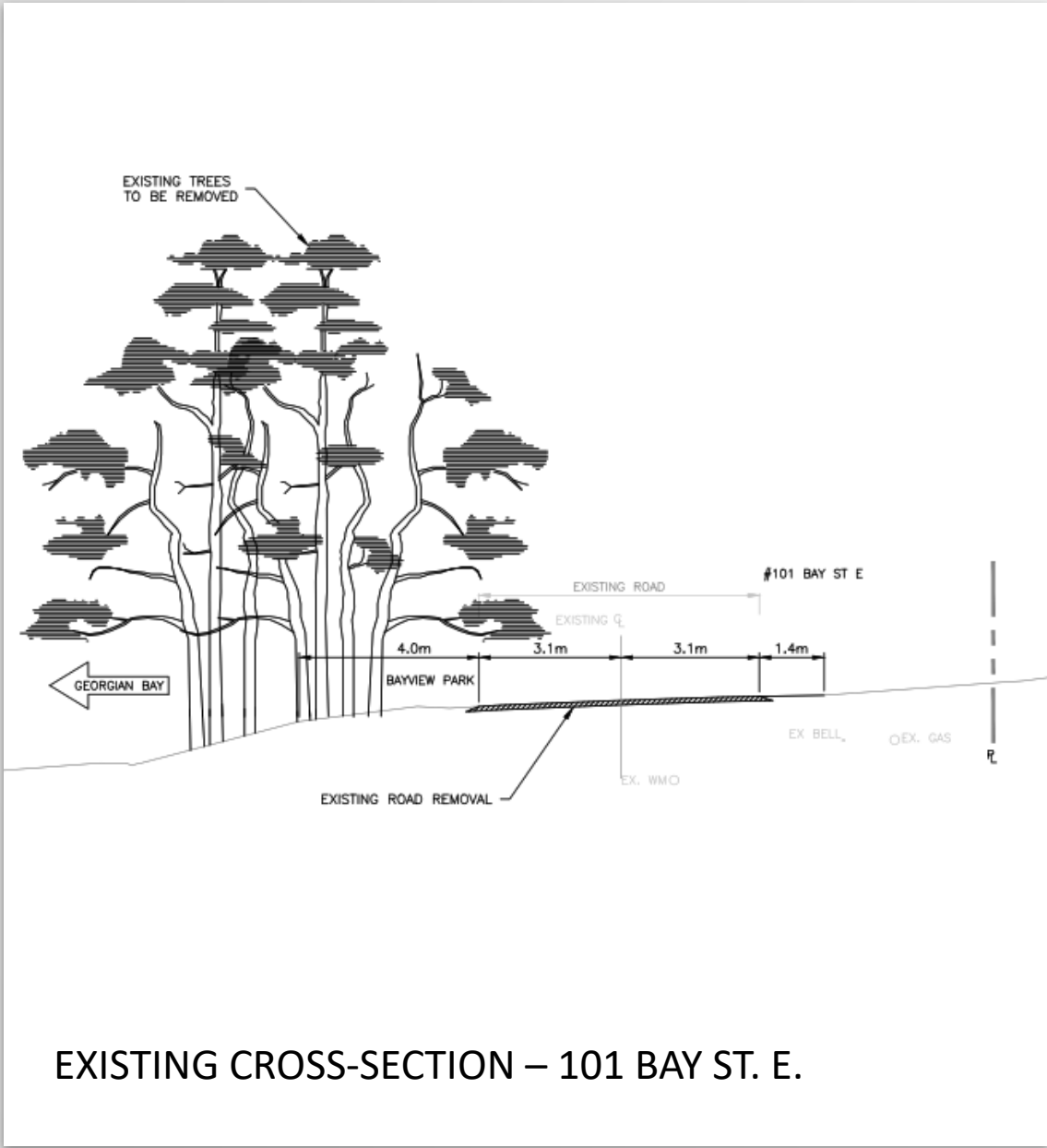


EXISTING CONDITION – 85 BAY ST. E.



Tree replacement
can be considered on
case-by-case basis

PROPOSED CONDITION – 85 BAY ST. E.



EXISTING CROSS-SECTION – 101 BAY ST. E.

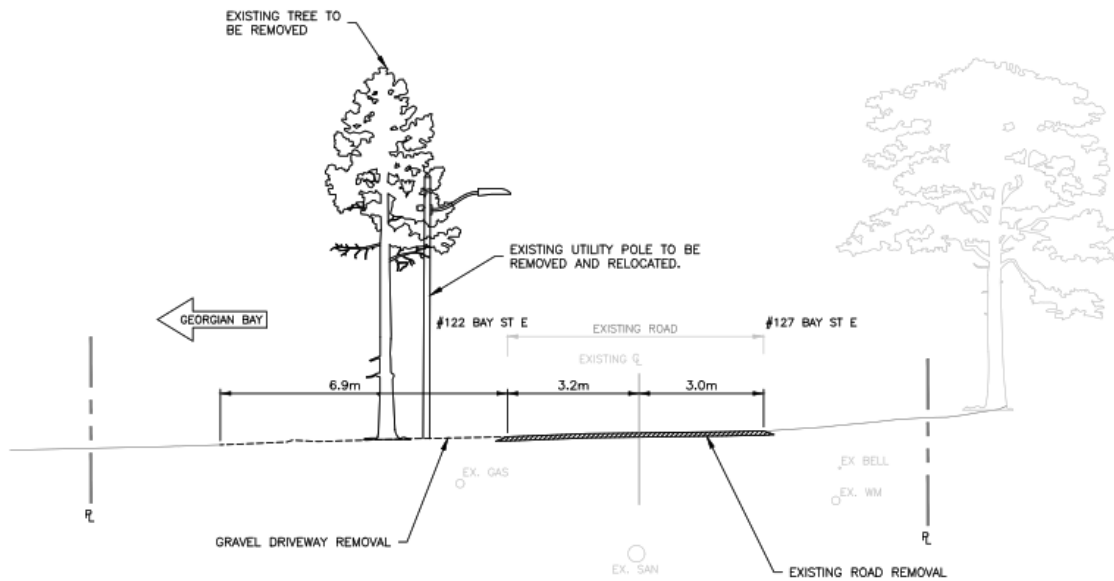
PROPOSED CROSS-SECTION – 101 BAY ST. E.



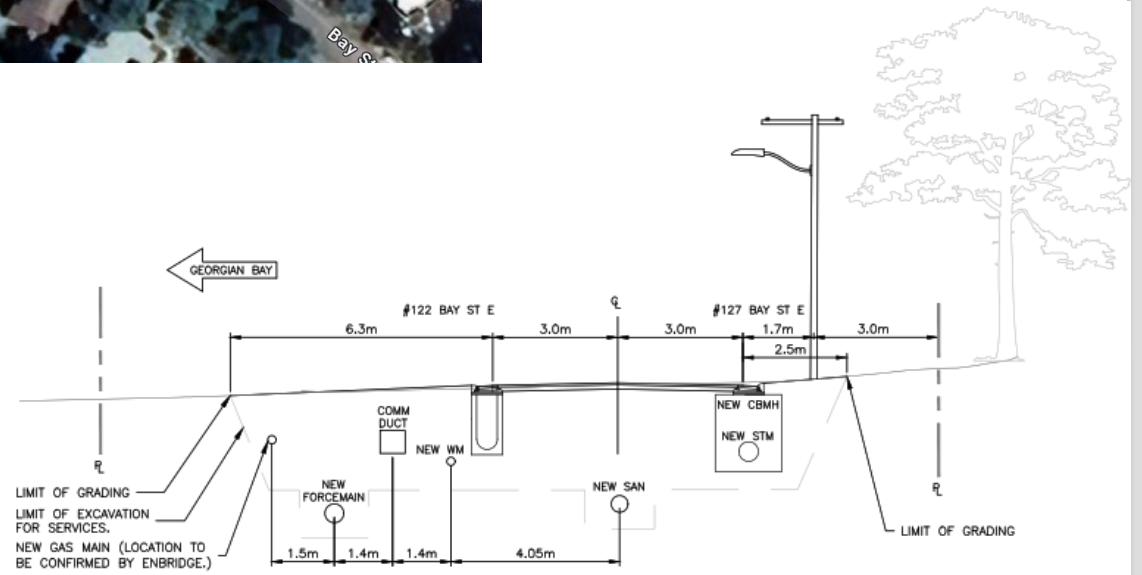
EXISTING CONDITION – 101 BAY ST. E.



PROPOSED CONDITION – 101 BAY ST. E.



EXISTING CROSS-SECTION – 127 BAY ST. E.



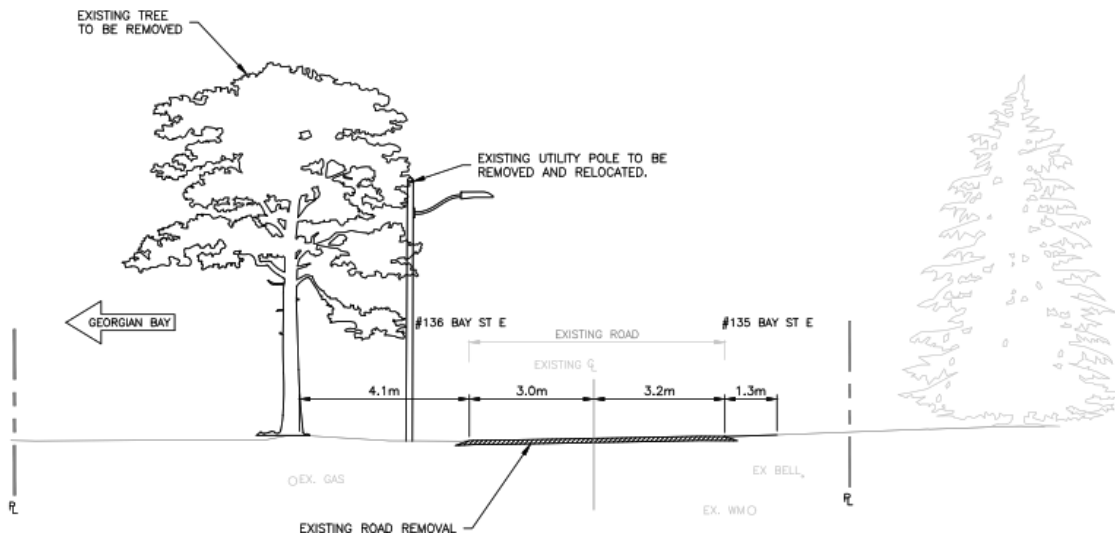
PROPOSED CROSS-SECTION – 127 BAY ST. E.



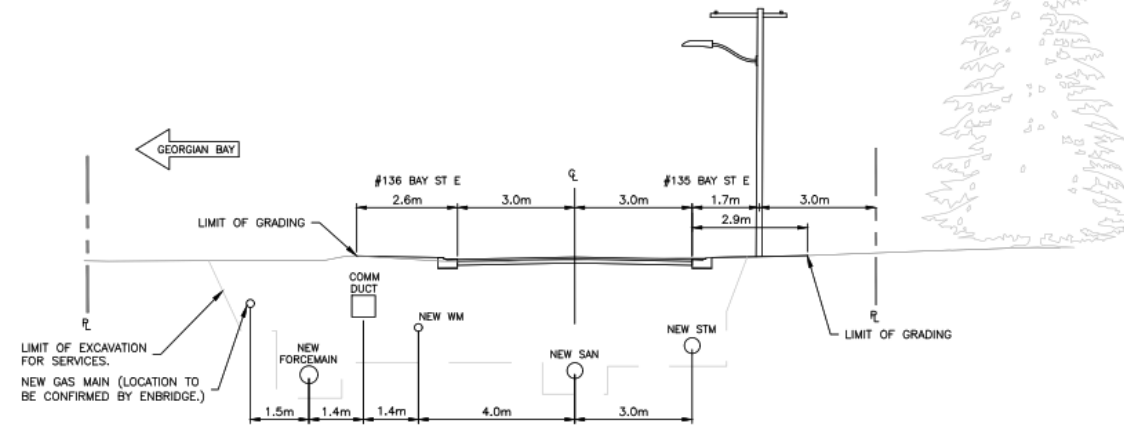
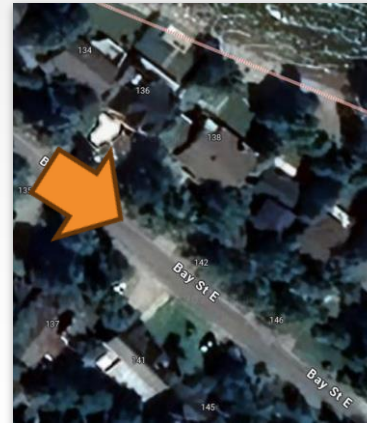
EXISTING CONDITION – 122/127 BAY ST. E.



PROPOSED CONDITION – 122/127 BAY ST. E.



EXISTING CROSS-SECTION – 135/136 BAY ST. E.



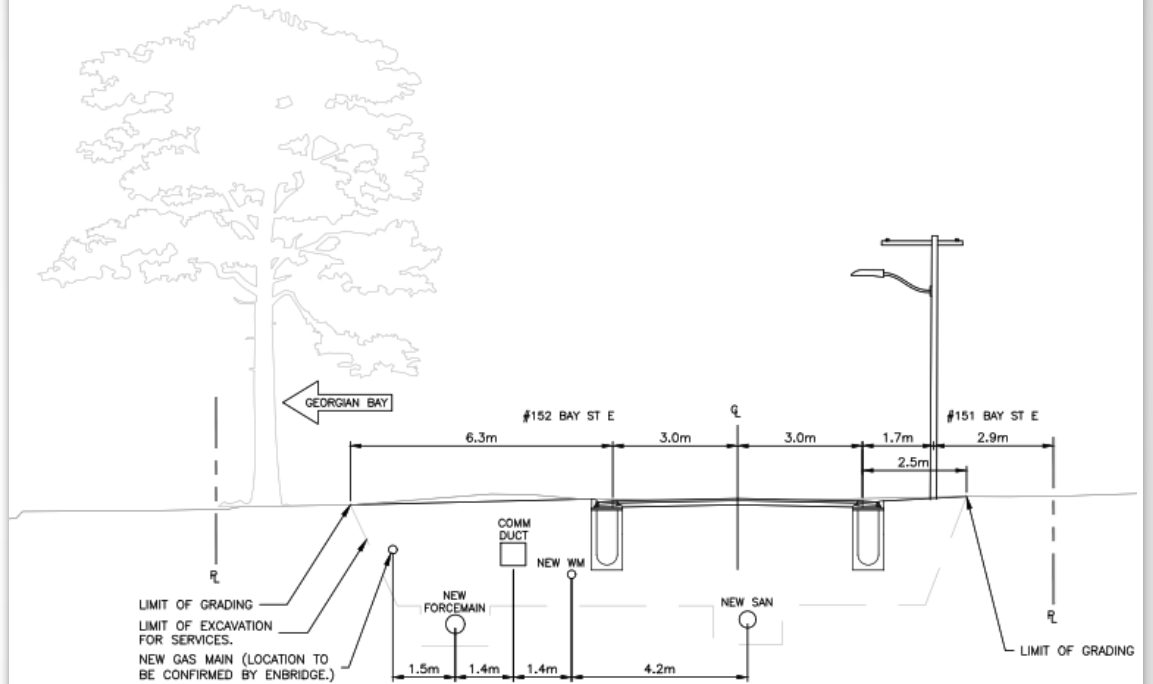
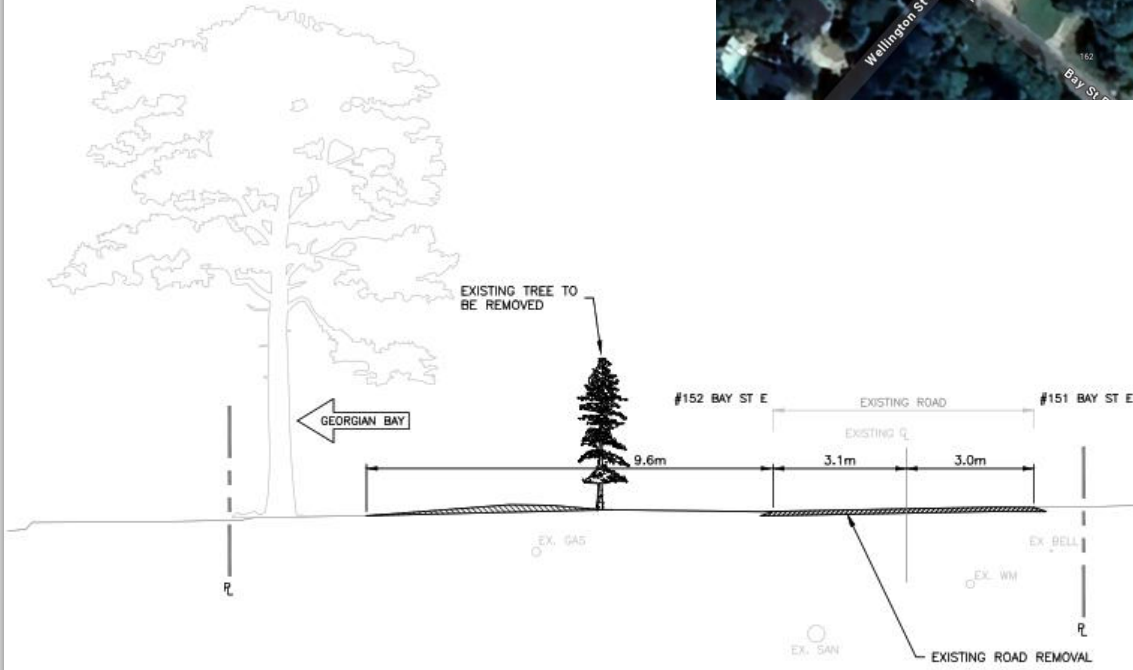
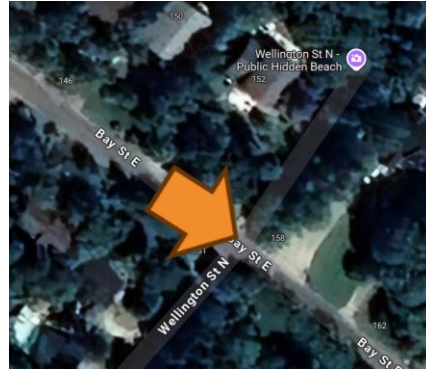
PROPOSED CROSS-SECTION – 135/136 BAY ST. E.



EXISTING CONDITION – 135/136 BAY ST. E.



PROPOSED CONDITION – 135/136 BAY ST E.

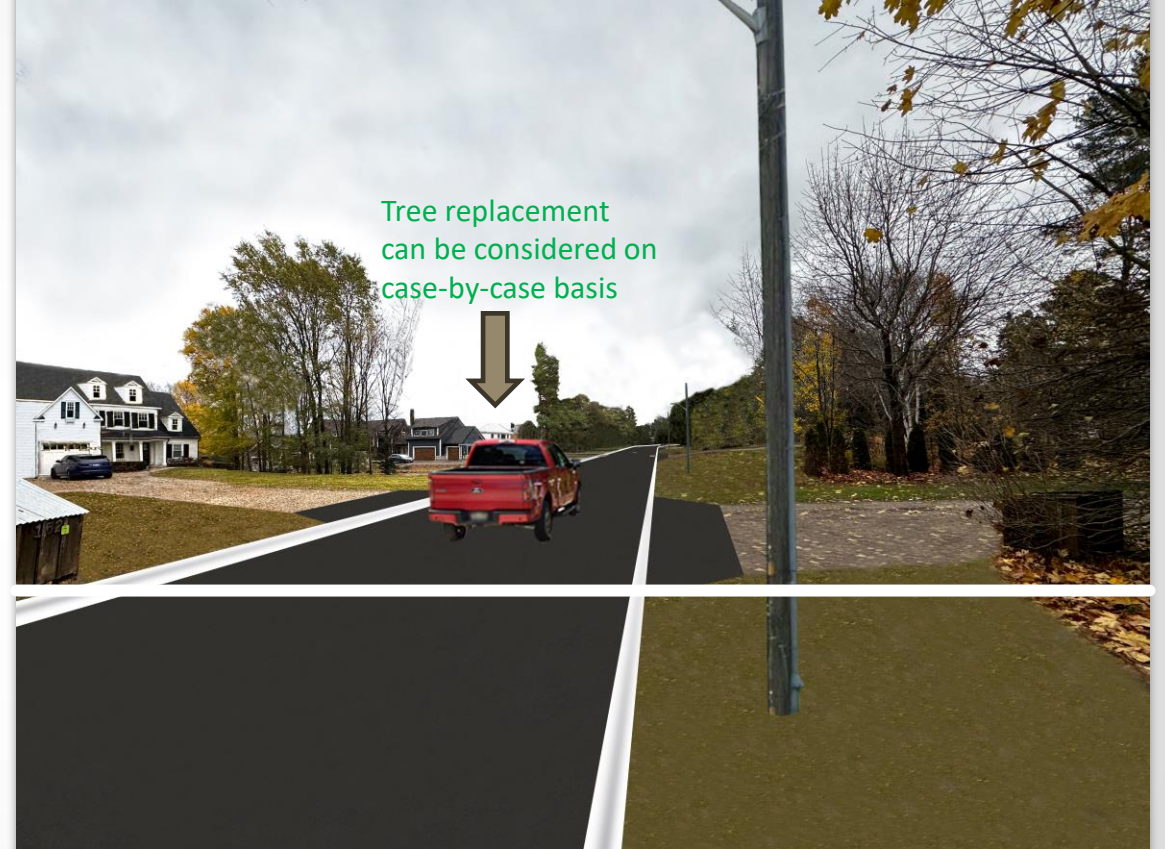


EXISTING CROSS-SECTION – 151/152 BAY ST. E.

PROPOSED CROSS-SECTION – 151/152 BAY ST. E.

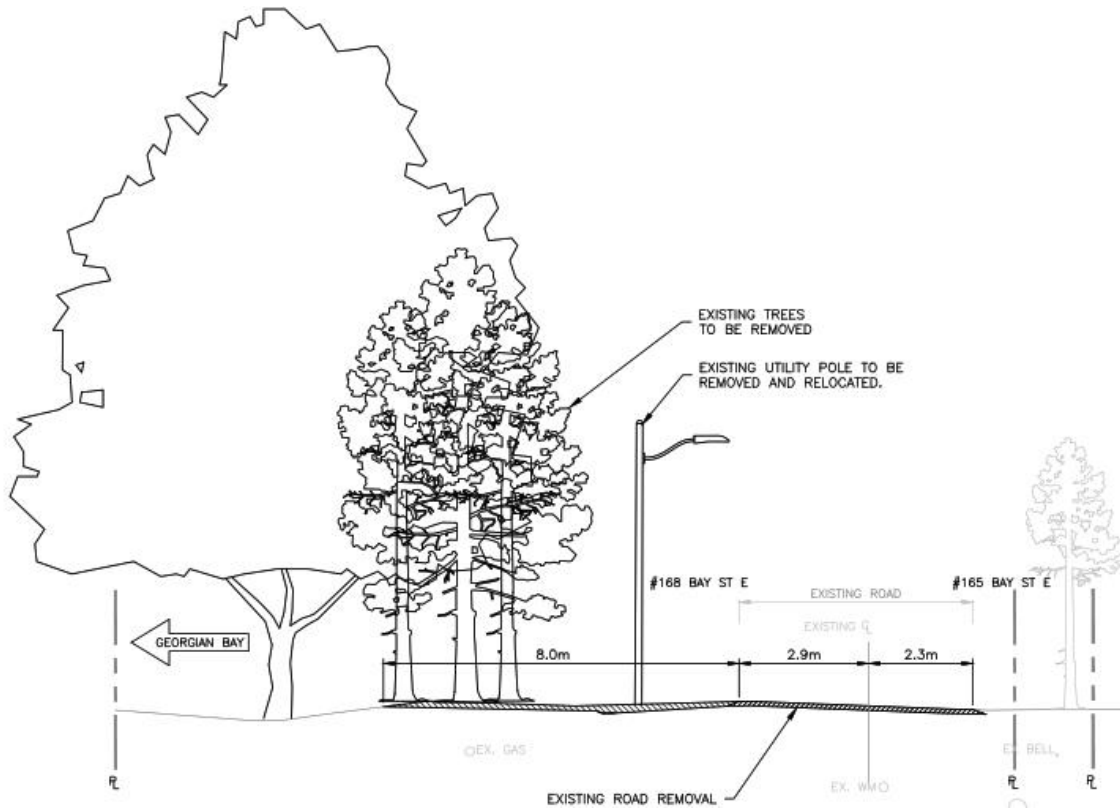


EXISTING CONDITION – 151/152 BAY ST. E.

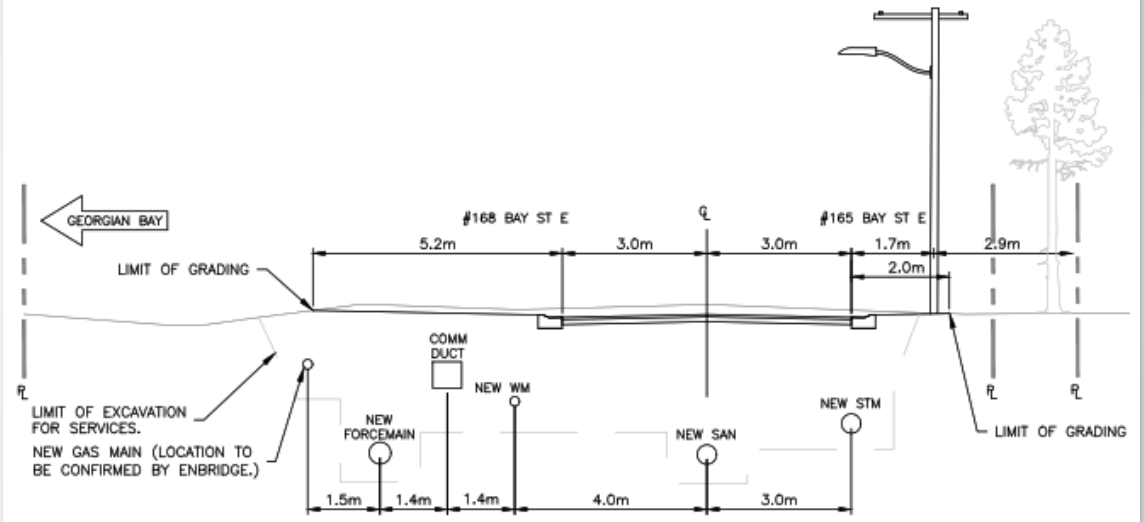


Tree replacement
can be considered on
case-by-case basis

PROPOSED CONDITION – 151/152 BAY ST. E.



EXISTING CROSS-SECTION – 165/168 BAY ST. E.



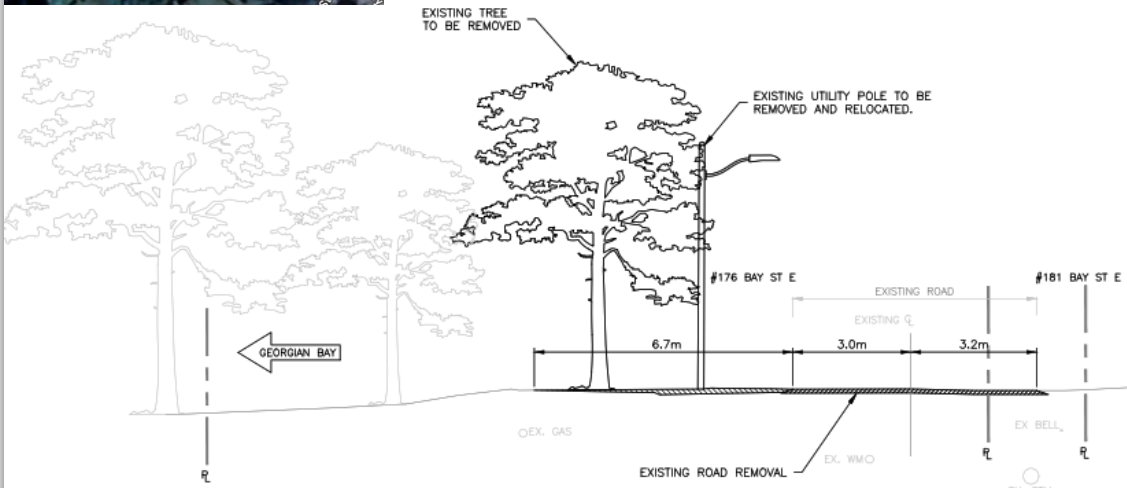
PROPOSED CROSS-SECTION – 165/168 BAY ST. E.



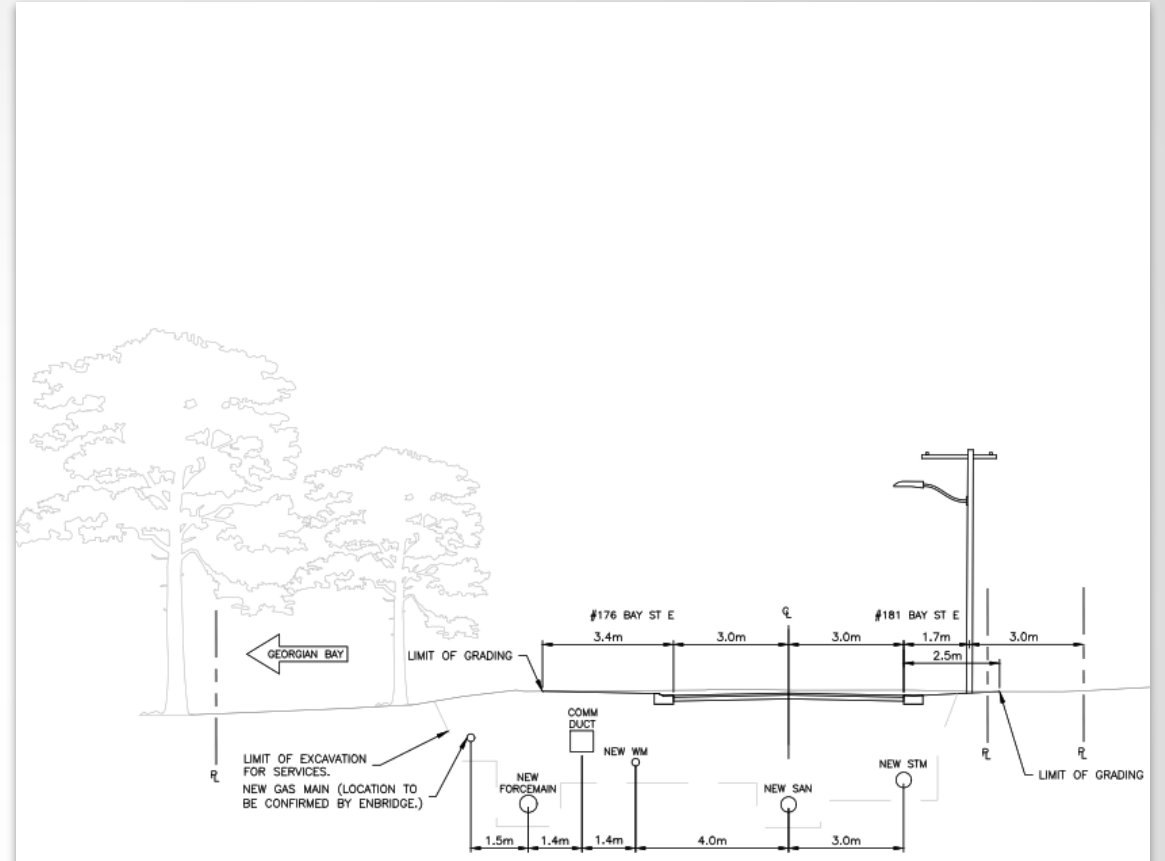
EXISTING CONDITION – 165/168 BAY ST. E.



PROPOSED CONDITION – 165/168 BAY ST. E.



EXISTING CROSS-SECTION – 176/181 BAY ST. E.



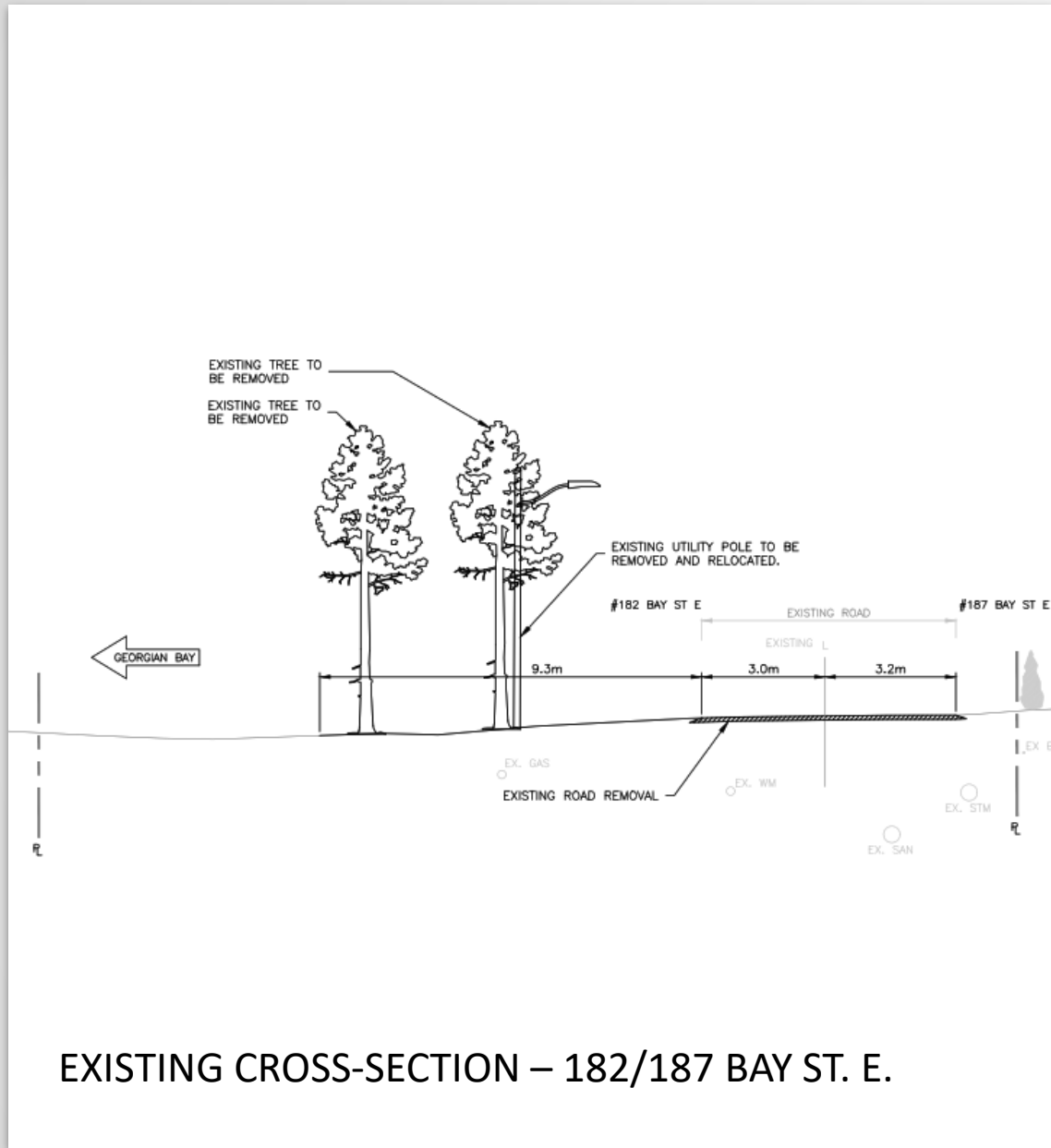
PROPOSED CROSS-SECTION – 176/181 BAY ST. E.



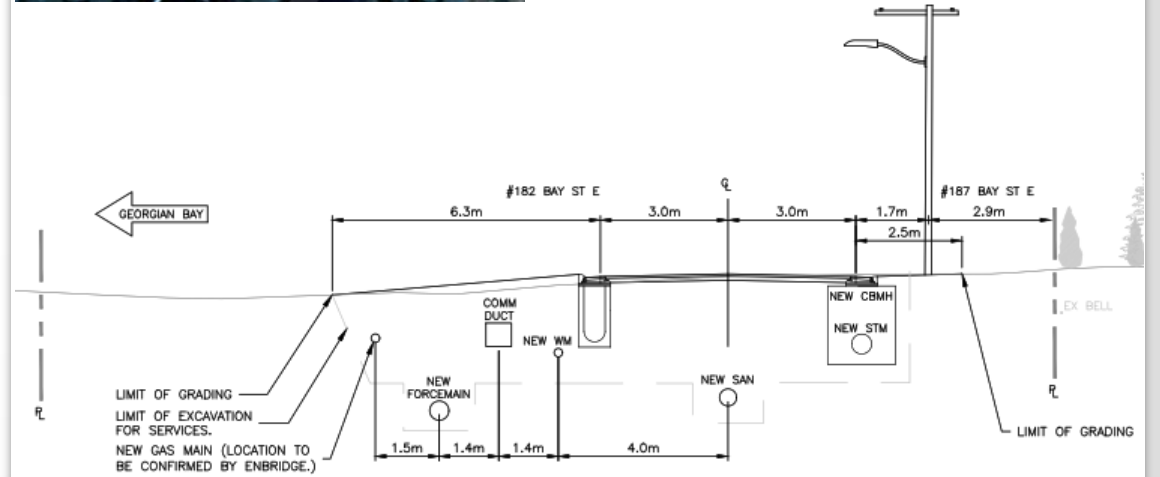
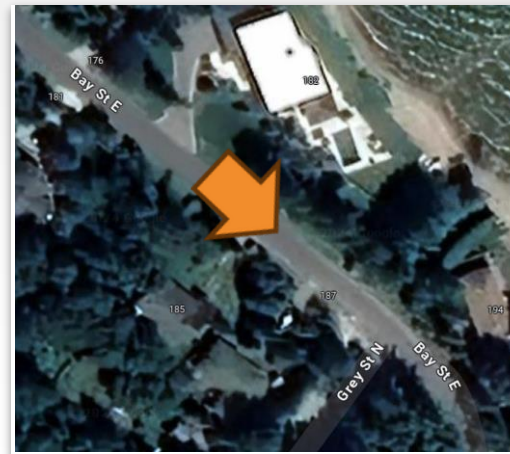
EXISTING CONDITION – 176/181 BAY ST. E.



PROPOSED CONDITION – 176/181 BAY ST. E.



EXISTING CROSS-SECTION – 182/187 BAY ST. E.



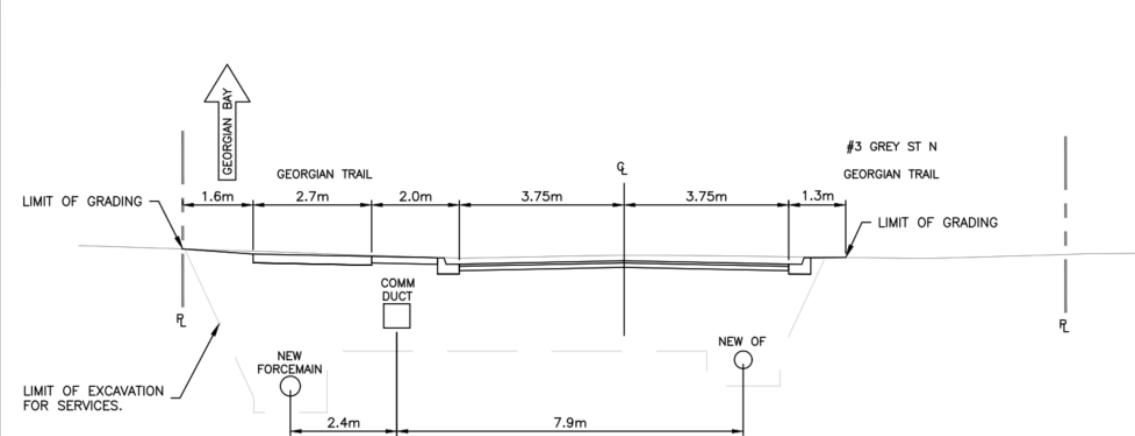
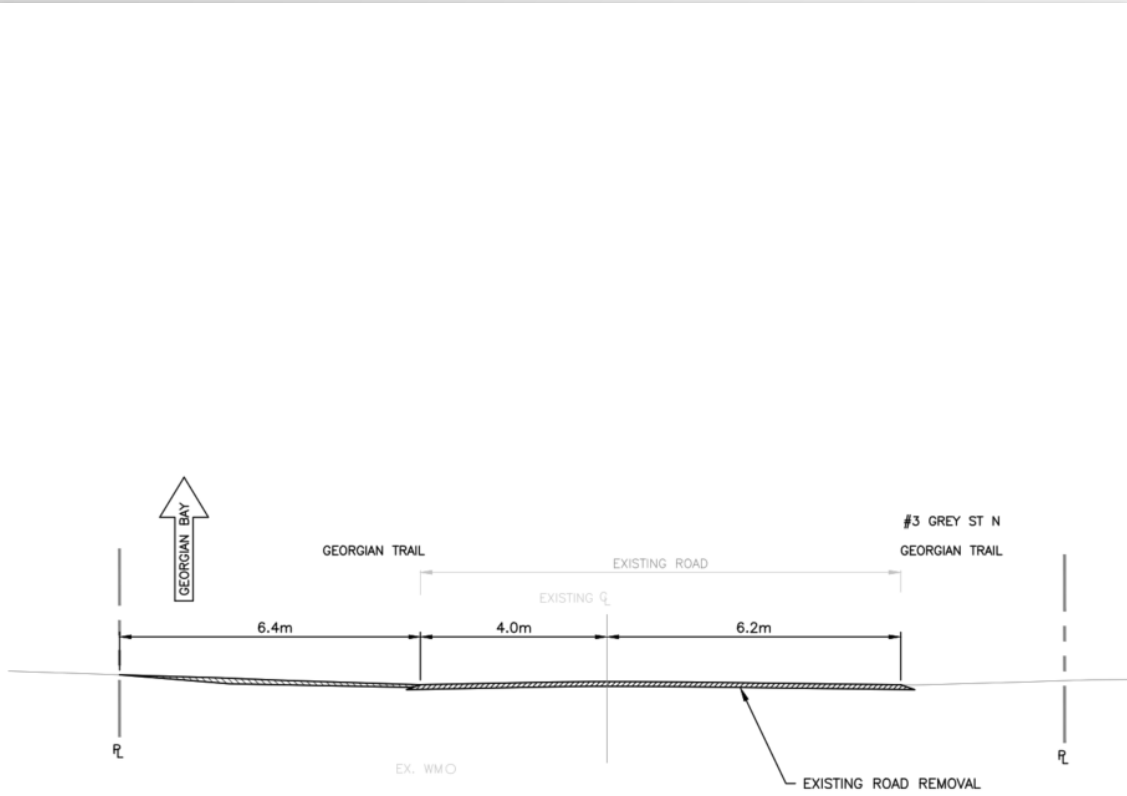
PROPOSED CROSS-SECTION – 182/187 BAY ST. E.



EXISTING CONDITION – 182/187 BAY ST. E.



PROPOSED CONDITION – 182/187 BAY ST. E.





EXISTING CONDITION – GREY ST.



PROPOSED CONDITION – GREY ST.

QUANTIFIED IMPACTS



Trees identified 355, Trees scheduled for removal 135-147, Trees to be protected during construction 208-220.



Replacement of Watermain – Elimination of problem area for water leaks. Installation of fire hydrants to provide full coverage to the Bay St. E. area.



Sanitary Sewer Replacement – Elimination of Elgin St. Sanitary Pumping Station and correction of area of high inflow/infiltration



Forcemain Installation – Improved hydraulics to service community more efficiently and reduce pumping costs and risk.

WHAT'S NEXT?



Town Staff will prepare a staff report to Council recommending advancing the project for tendering.



The design will be finalized to 90% for Town review and to 100% for tendering.



Tender will be issued in the Spring for 2025/2026 Construction.

CONSTRUCTION PHASING

■ **SUMMER/FALL 2025**

- STAGE 1 – BAY ST. E. – MILL ST. TO ELGIN ST.
- STAGE 2 – GREY ST. – BAY ST. EAST TO THORNBURY WWTP
- STAGE 3 – THORNBURY WWTP OUTFALL – IN-WATER WORK

■ **WINTER/SPRING/SUMMER/FALL 2025/2026**

- STAGE 4 – MILL ST. SANITARY PUMPING STATION

■ **SPRING/SUMMER 2026**

- STAGE 5 – BAY ST. E. – ELGIN TO GREY ST. AND FINAL CONNECTIONS.

IMPACTS DURING CONSTRUCTION



ACCESS TO PROPERTY

Road will be closed to through traffic.

Residents will have full access with short term limitations with appropriate notification (48 hours followed by 24-hour confirmation).



WATER SERVICE

Temporary Watermain will be provided.

Minor Water Outages may be required for connections with appropriate notification.



SANITARY SERVICE

Short term (hours) outages may occur when your sanitary service is being connected. Appropriate notification will be provided.



TREE REMOVAL

Identified trees for removal will be removed in the winter before construction starts.

Tree protection will be completed by Contractor under the direction of the Arborist.

Opportunities for replanting will be coordinated with residents

Thank you for your time

Questions?

For additional project information and updates go to:
<https://www.thebluemountains.ca/planning-building-construction/current-projects/municipal-infrastructure-projects/bay-street-east>

Jamie Witherspoon, P.Eng. – President

WT Infrastructure Solutions Inc.

jamie.witherspoon@wtinfrastructure.ca

