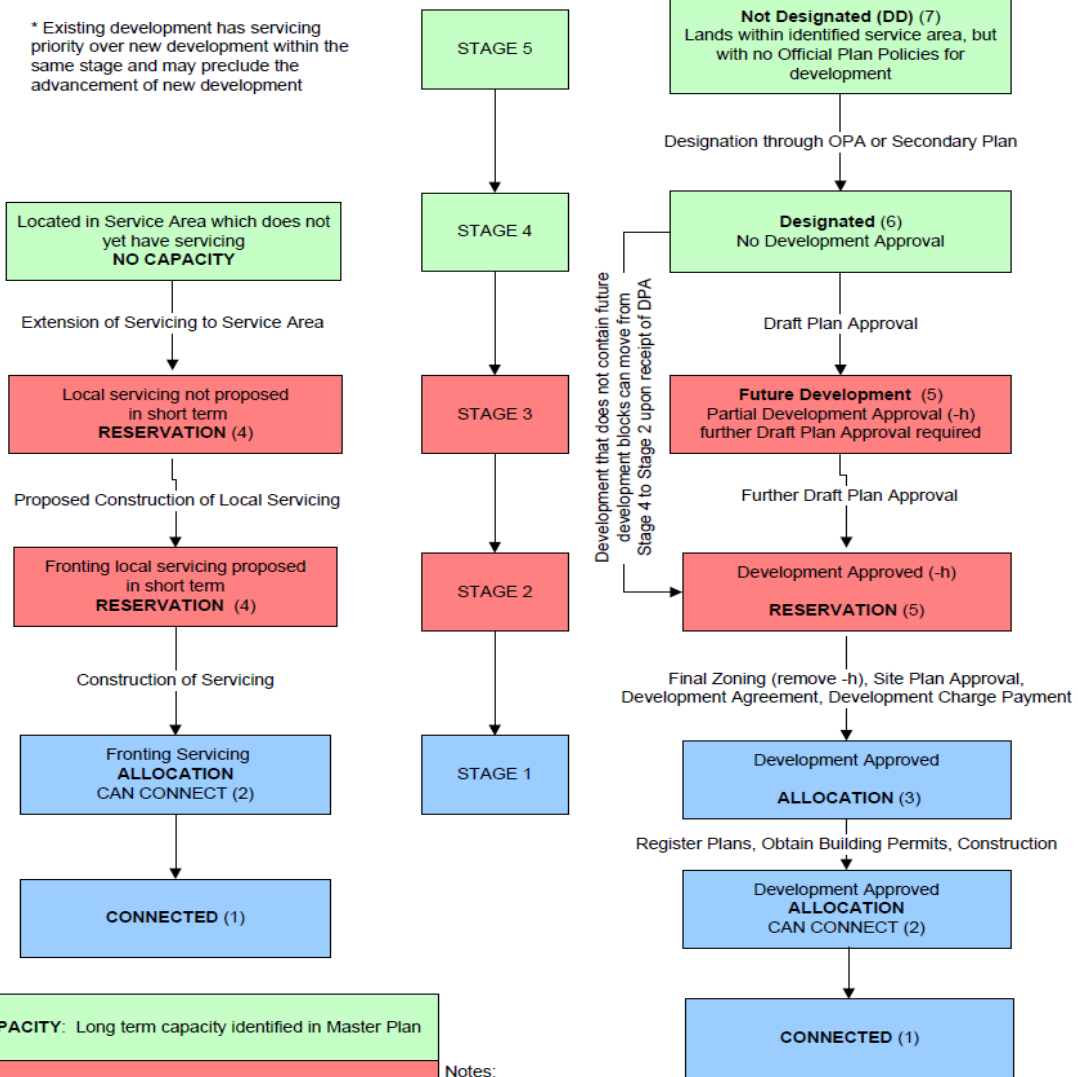


EXISTING UNSERVICED DEVELOPMENT *

* Includes vacant lots which can be developed without further development approval

* Existing development has servicing priority over new development within the same stage and may preclude the advancement of new development

NEW DEVELOPMENT



NO CAPACITY: Long term capacity identified in Master Plan

RESERVATION: Commitment of Design Capacity

ALLOCATION: Commitment of Built Capacity

Notes:
 1. Number in () in each stage corresponds to development categories identified in the Town's Year End Report.
 2. DD = Deferred Development
 3. -h = denotes that development is in a "holding zone" because further approvals are required such as allocation of capacity or development agreement



Figure 1: Development Staging Process

