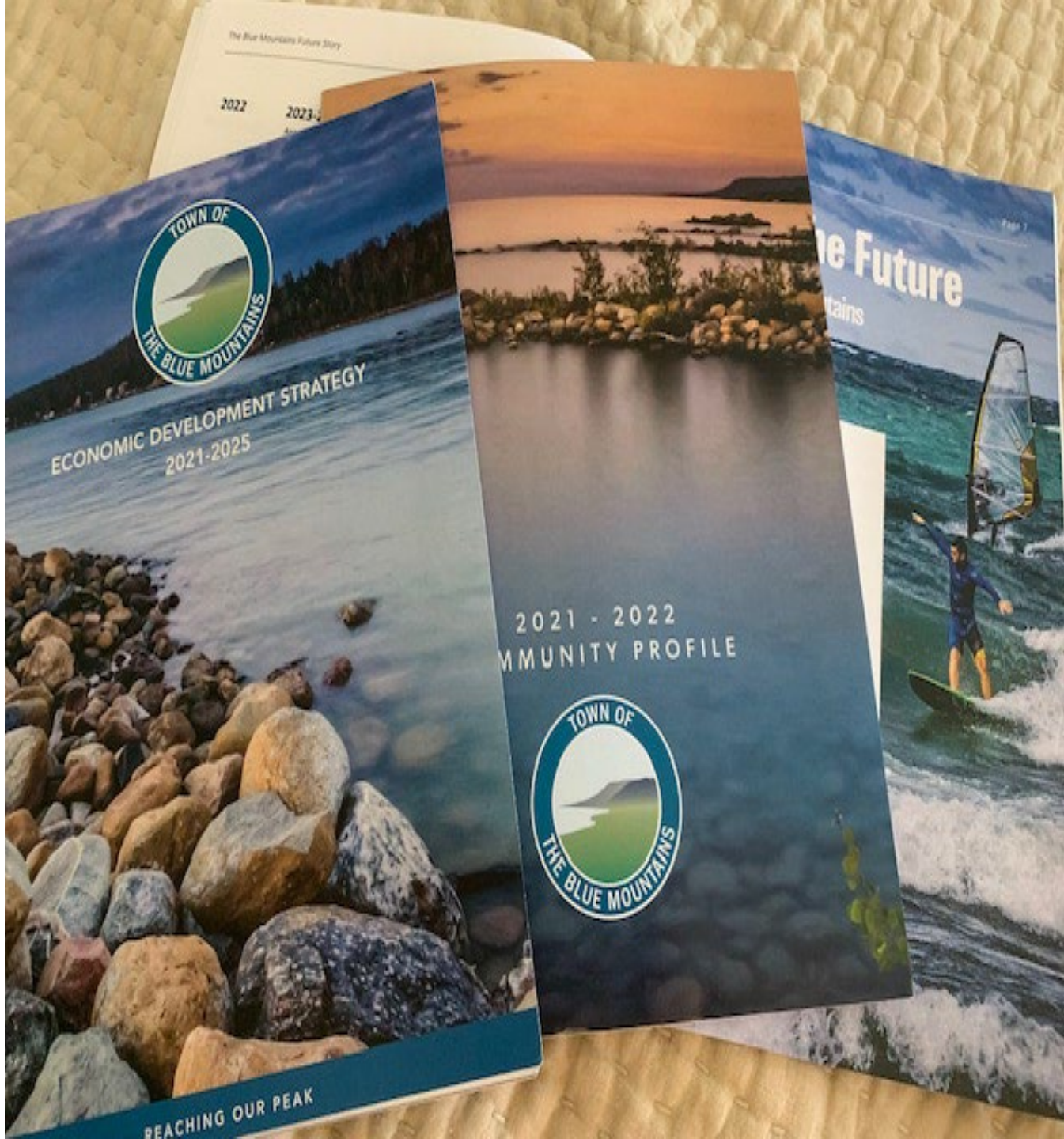




Nottawasaga Bay Needs Your Attention

Presented to Town of Blue Mountains
Fall 2023

By Pamela Spence
[REDACTED]



The Town of The Blue Mountains takes pride & promotes the natural beauty of the Escarpment and Georgian Bay and uses wonderful visuals to demonstrate our beauty.

TBM's Community Profile speaks to –
Sparkling Georgian Bay
Clear Waters
Crystal Clear waters

TBM's Future Story – ICSP Natural Environment Goal Bullet #6 of 10 is:
“Has pristine waters in Georgian Bay and throughout the connected watersheds”



Northwinds Beach

June 26, 2023





Nottawasaga Bay
At
Craigleith

Between
Northwinds Beach
At Grey Rd 19
&
Fraser Cres West

Watercourses 6-11



Bay neighbours have noticed the degradation in the water and have written the Town

[REDACTED]

[REDACTED]

From Town of the Blue Mountains' Development Engineering Dept. (Aug 29 2023)

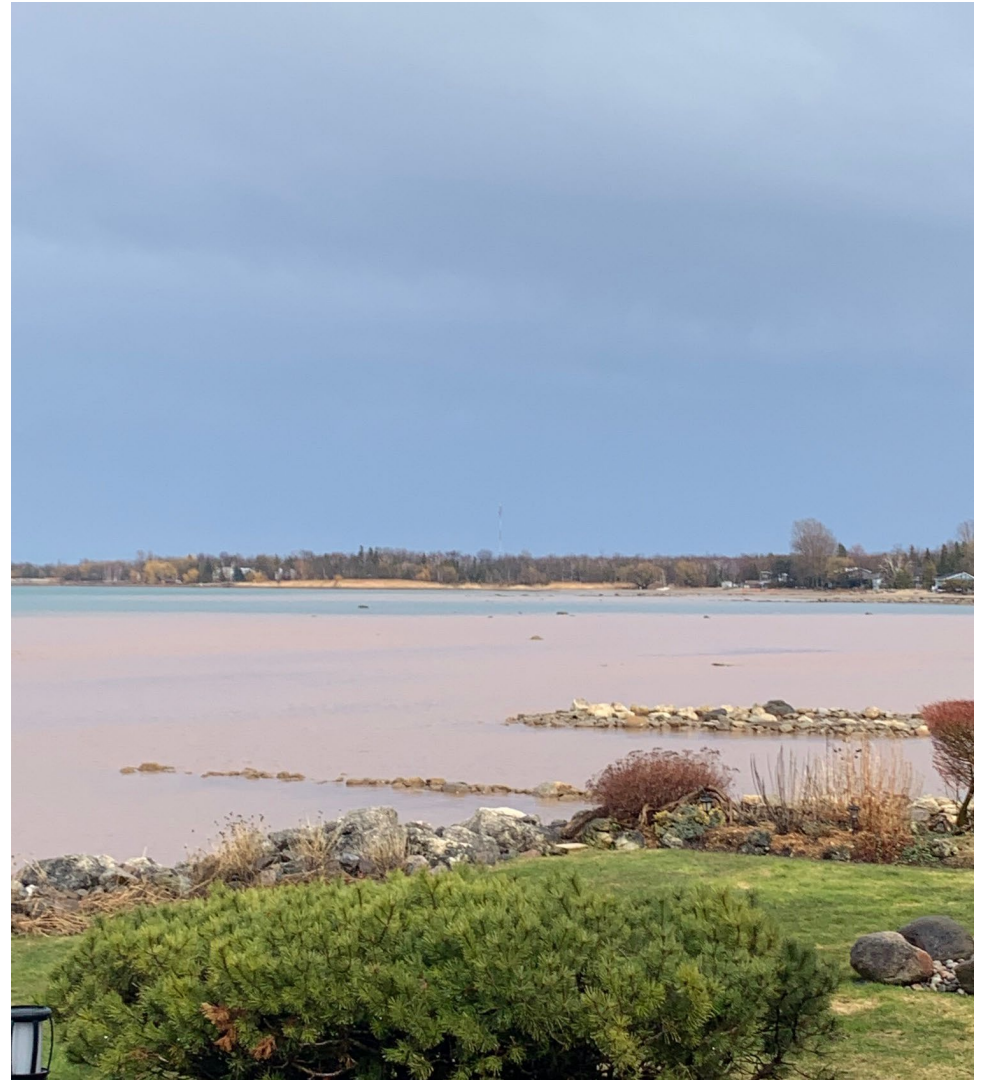
“The Town is aware of sedimentation issues and regularly works with the Conservation Authority(s) and the Ministry of the Environment to ensure that Developers have the appropriate sedimentation & erosion controls installed and functioning on Development sites. However as I’m sure you are aware, the clay soils prevalent in the area are easily eroded even in natural systems to form a colloidal suspension that causes the discolouration in Georgian Bay adjacent to the shoreline. If you are aware of a specific site creating a sedimentation issue, please contact us directly and we will follow up.” **Not Citizen’s Job!**



April 5,

April 12,

April 13





June
26





June
30



July 1





July
7
&
July
13

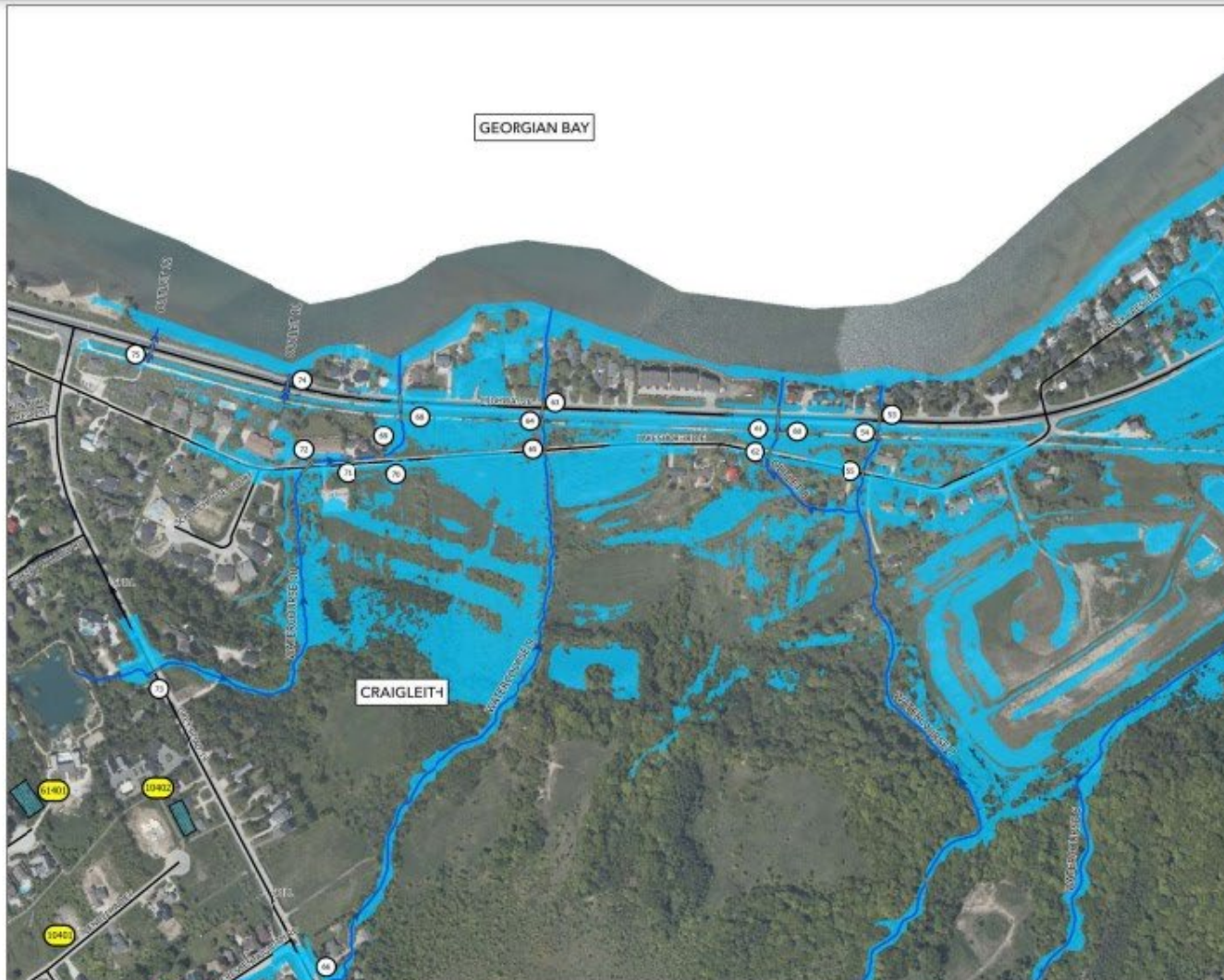




July 13



This area was studied under the Drainage Master Plan and is noted for holding water. With multiple developments going in and surfaces being paved, the engineering solution is to convey the runoff to the Bay via the watercourses. More erosion and impact on the Bay can be expected! Written several places in the Drainage Master Plan – **Convey to the Bay!**



TATHAM
ENGINEERING
TOWN OF THE BLUE MOUNTAINS
DRAINAGE MASTER PLAN
DRAINAGE ACT AREA
FLOOD INUNDATION LIMITS

LEGEND

- WATERCOURSE
- ▨ POTENTIAL AREA OF INUNDATION
- ▨ INUNDATION LIMITS
- CULVERT/BRIDGE CROSSING
- SETTLEMENT AREA BOUNDARY
- ▭ SWM FACILITY
- SWM FACILITY ID
- CULVERT/BRIDGE ID
- ROAD



TBM Drainage Master Plan



Watercourse 11 (?)
– June 23/23
Near Entrance to
Northwinds Beach



Watercourse 10 - April 2023
Starts at North Parking Lot
Craigleith Ski Club





Craigleith Ski Club
North Parking Lot

June 26/23

Watercourse 10 –

Not just a spring
phenomenon

Watercourse 9 from Grey Rd 19 to Hwy 26 - June 2023

Orchard Wetland South of Grey Rd 19



South of Lakeshore Rd





June
Hwy 26

April
WC 9 Ford Drain Outlet

June

Watercourse 7 starts at Blue Mountain/TSC – silt fence does little good; slope work went on for several weeks



Watercourse 7 -at Lakeshore Rd and Georgian Trail and then to the Bay



What will the consequences be on the Bay from erosion, turbidity and bedload?



August 4/23

The runoff into Nottawasaga Bay starts at the Escarpment, rushes down the slopes into TBM channels, ditches, culverts and the watercourses. The erosion is not the fault of the new Developments but may increase!

No one knows what is in that water and what it is doing to the Bay!

Highlighted Concerns -

- Quantity and velocity of runoff
- Erosion and sedimentation
- Highly turbid water (can't see your feet in water below your knees)
- Chemical content of runoff unknown
- Increased algae blooms & aquatic weeds
- Potential beach and shoreline degradation & closures
- Bedload in runoff creating plumes way out into the bay affecting aquatic wildlife
- Alarm bells sounded in OPR; anticipate more runoff and erosion due to Climate Change



The Ask:

Council to allocate \$\$ and resources & direct Planning, Development Engineering and Operations to improve erosion studies and policies, such as:

- Change the mantra of the Master Drainage Plan from conveyance to the Bay to **clean** conveyance to the Bay
- Ensure the Master Drainage Plan includes study and monitor of runoff from watercourses 13-5 (at a minimum)
- Measure sources, causes, volume, speed and bedload of runoff in the watercourses at numerous locations from the top of the escarpment to the bay
- Implement measures/methods to slow runoff throughout the watersheds & do not compromise 30m setback policy
- Require better erosion control with filtering such as hay bales, silt socks, erosion control blankets, coco rolls, etc.



Monitor runoff content for fertilizers, chemicals and other contaminants



Improve policies on watershed planning, natural wetland preservation & artificial wetland creation



Create and implement greener engineering standards & low impact drainage (LID) in developments



Study, monitor and measure content of other watercourses along the Bay



Approve policies for better erosion control ie., more tree planting and tree preservation



Maintain culverts and drain outlets on a regular basis to prevent debris dams.



This is a call to ACTION

Let's clean up our
watercourses to keep
Nottawasaga Bay pristine!

Thank you

