

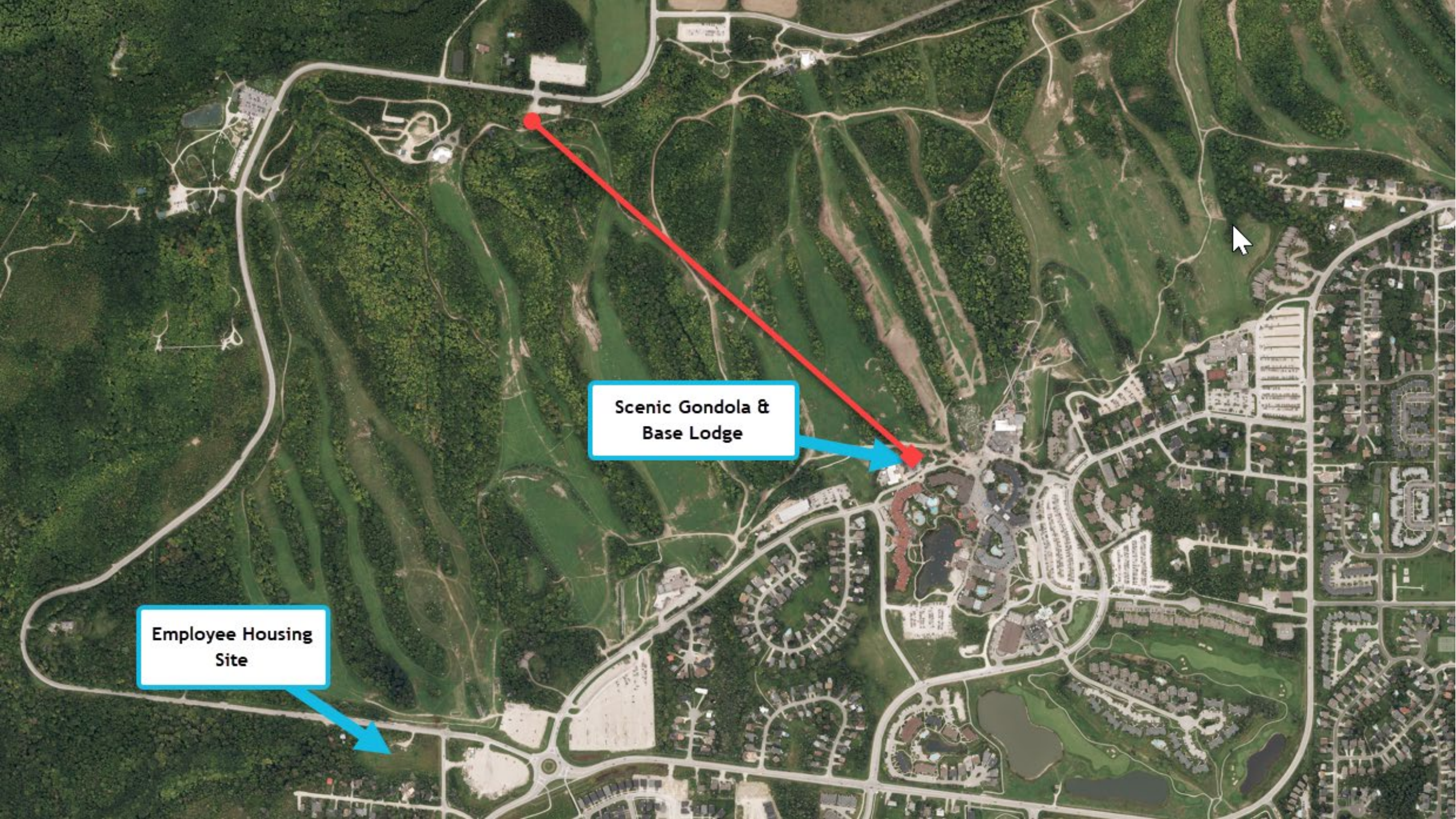


Blue Mountain Resorts Project Updates

Dan Skelton, President & COO

Nov. 20, 2023





Employee Housing Site

Scenic Gondola & Base Lodge

Scenic Gondola

- Gondola line will run from Village Base area to the Upper South area of the Resort.
- Open-Air Gondola - similar to current summer operations of Silver Bullet.
- Scenic Gondola will provide all-season access to skiing and non-skiing guests.
- Scenic Gondola will allow for improved distribution of visitors across the resort.



Scenic Gondola Base Lodge

- Back of house loading docks for deliveries
- Guest washrooms
- Food & Beverage and Retail commercial mix



Resort Employee Housing

- Project team and consultants are progressing with building and site design.
- Ongoing conversations with Town Staff and commenting agencies.
- This building would allow us to house approximately 301 employees.



Blue Mountain Resort requests Council's support of a Community Infrastructure and Housing Accelerator Order (CIHA) to facilitate expedited approvals required for the Blue Mountain Resorts Employee Housing project by directing Staff to prepare a Draft CIHA Order to the Ministry of Municipal Affairs and Housing. The CIHA Order would enable the provision of a maximum 301 room, five storey Staff Housing project on Blue Mountain Resort property.

Questions?

Thank you