



January 10, 2023

# Community Services

---

Council Orientation

# Presentation Outline

---

Community Services  
Council Orientation

Introduction

Organizational Chart

Administration

BVCC/Tomahawk/Building Maintenance

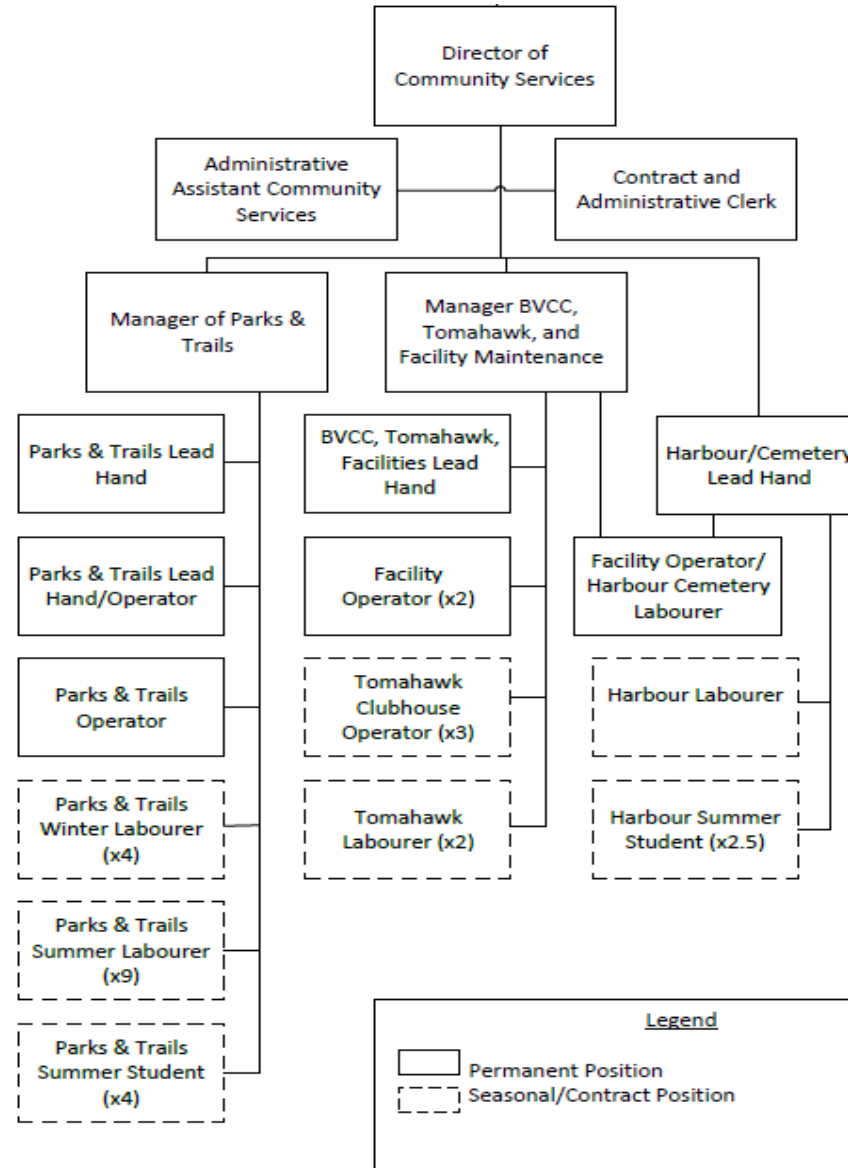
Harbour and Cemetery

Parks and Trails

Conclusion

Comments or Questions

# Organizational Chart



# Administration

---

# Administration

- Community Services Administration
- Special Event Permitting
- Support for BIA Beautification and Events
- Senior and Youth Events and Groups
- Transit
- Paid Parking
- Cemetery (Active and Heritage)
- Thornbury Harbour
- Parks and Trails
- Pickleball and Tennis Court Booking
- Sports Fields – Baseball & Soccer Bookings
- Skateboard Park
- Dog Parks
- Tree Nursery
- Tomahawk Golf Course
- Beaver Valley Community Centre/Arena Bookings
- Facility Maintenance
- Small Hall Bookings
- Leisure Activities Plan



# Transit

- Collaboration with the Town of Collingwood, Blue Mountain Resort and Blue Mountain Village Association, Grey County to provide public transit along Highway 26 with stops in Thornbury (Foodland, Blue Mountain Health Centre), Craigleith (Craigleith Community Centre) and Blue Mountain Village area (Blue Mountain Resort – Terminal 2).
- The pandemic had a significant negative impact on ridership, but the systems are now seeing an increase in ridership. Grey Transit Route saw 474 trips in 2021 and we are estimating that they will see approximately 1,300 trips in 2022. Collingwood Transit had 25,000 trips in 2021 and we are estimating 34,000 trips in 2022.



# Special Event Permitting

In 2022 staff reviewed and provided permits for 18 Special Events in the 2<sup>nd</sup> half of the year. 0 permits were issued in Q1 and Q2 in 2022. Staff are expecting a significant increase in Special Event Applications in 2023.

- Canada Day Celebrations (Town Lead)
- Lobsterfest
- Sea Otter Cycling Event
- Great Waterfront Trail Adventure
- TD Securities Cycling Event
- Seniors Network Blue Mountains – Seniors Fair (Town Staff Lead)
- Beaver Valley Fall Fair
- Legion – Remembrance Day Events
- Oktoberfest
- Run Myles to Mars
- Growling Beavers Brevet
- CIBC Run for the Cure
- Rotary Half Marathon – Turkey Trot
- Clarksburg Pumpkin Walk – Clarksburg Village Association
- Legion – Memorial Wreath – Queen Elizabeth II
- Music in the Park
- Olde Fashioned Christmas

All applications are reviewed by:

- Community Services
  - Roads Division
  - Fire Department
  - Local OPP
  - Grey County EMS
- Staff work closely with OPP on road closures, event routes and traffic control measures
  - Logistical meetings are held for large and multi-regional events

# BVCC/Tomahawk/Building Maintenance

---

# Tomahawk Golf Course

- Tomahawk property purchased in 2007 for the main purpose of installing soccer pitches for the local user groups and included an 18-hole, Par 3 golf course.
- Open seasonally from May 1st to November 1<sup>st</sup>, weather dependent .
- Previous operations vs operational changes directed by the COVID Pandemic.
  - ❖ Donation-based revenue generation/Green Fee collection, Season Passes.
  - ❖ First come first serve tee times/Tee time booking process.
  - ❖ Maintenance Staff limited Presence/Full compliment of staff from opening to close, daily.
  - ❖ New Starter Shack will allow additional revenue generation opportunities through sale of Tomahawk garb, confectionary items, and pull cart rentals.



# Tomahawk Golf Course



Description	2021 Actual	2022 Actual	2023 Expected
Paid rounds of golf	6788	8,104	9,000
Member Rounds	3313	4,062	4,500
Subsidized Kids Rounds	1769	1,839	2,000
Season Passes	93	133	150
Tournament Requests	2	2	4

# Beaver Valley Community Centre

- The Beaver Valley Community Centre (BVCC) was built in 1986 and is a licensable venue that offers a large hall, small hall, bar service area, and a certified kitchen. The full facility has a maximum capacity of 369 participants. The BVCC is directly connected to the Beaver Valley Arena, which can be combined to provide additional space for larger events.
- Operational transition from alcohol-based events to active living programming (Pickleball, Tai Chi, and walking groups)
- Beaver Valley Outreach utilization of space for Good Food Box and Early On Programming
- 15 different Pickleball groups utilize the large hall for 63 hours per week.
- 8 hours per week for exercise groups (Tai Chi, Gamble Walking Group)



# Ice Rink

- The Beaver Valley Arena offers an ice surface that is 195' long x 90' wide and operates from mid-September to late March each year
- Main user groups consist of the Beaver Valley Athletic Association, Georgian Shores Minor Hockey, and The Beaver Valley Curling Centre.

Description	2019 Actual	2022/23 Actual	2023/24 Expected
Figure skating hours per month	36	36	36
Minor Hockey ice hours per month	60	68	70
Recreation Leagues hours per month	44	44	44
Average Private Rentals per month	8	12	14
Tournaments Per Season	4	9	9
Municipally run program hours per month	12	14	14
Curling hours per month (average over season)	40	24	24



# Small Halls

- **Craigleith Community Centre**

- 132 Lakeshore Road, Craigleith
- Capacity = 30 people
- Municipal water and sewer
- Typical uses include family reunions, dinners, birthday parties, etc.
- No Alcohol related events permitted



- **Ravenna Hall**

- 628299 Grey Road 119, Ravenna
- Capacity = 43 people
- Accessible entry
- Accessible washrooms
- Well and septic systems
- Typical uses include family Christmas dinners, Yoga, arts and crafts, birthday parties, etc.
- No alcohol related events permitted



# Building Maintenance

- Minor Capital, Operating Maintenance and, Contractor coordination for Town Hall, OPP Detachment, The Blue Mountains Public Library, Craigleith Heritage Depot, Craigleith Community Centre, and the Ravenna Hall
- All facilities are to be inspected monthly
- Administration of cleaning contract services for all facilities noted above
- Additionally building maintenance staff coordinated the Facility Condition Assessments for all 43 Town facilities in 2018
- In 2022, 265 work orders were submitted for works related to the facilities noted above. Of these 265 work orders, 130 were completed due staffing levels.



The background is a stylized, monochromatic blue-toned landscape. It features rolling hills and mountains in the background, with a body of water in the foreground. The water is represented by a lighter blue shape that curves along the base of the hills. The overall aesthetic is clean and modern, using different shades of blue to create depth and texture.

# Harbour and Cemetery

# Harbour

- 250 slips available for seasonal boaters
- Operations 7 days per week from Victoria Day Long weekend thru Thanksgiving
- Approximately 135 transients in 2022
- Water and Power on Docks
  - Hydro service available to 185 slips
  - Water available to all slip users
- Kayak & Day Sailor storage:
  - 30 racks for kayaks/paddleboards/canoes
  - 22 spots on land, 8 spots on storage racks for day sailors
- Waiting list of more than 250 vessels:
  - 63 – for vessels 21' and smaller
  - 80 – for vessels 22' – 27'
  - 63 – for vessels 28' – 35'
  - 50 – for vessels 36' and larger



- Fuel and Wastewater Pump-out Service
- Litres of Gas & Diesel – G (45,654 L) Diesel (8,228 L)
- Daily Dock and Vessel Inspections
- Daily Garbage Collection
- Daily Washroom Cleaning

# Cemetery

- Year-round interment services available
- 39 interments in 2022
  - 9 Standard casket interments
  - 24 Cremation interments in Plots
  - 6 Cremation interments in Niches
- Plot/niche interment rights sales
- Interment right transfers
- Stone Orchard Software (SOS) contains interment records to date
- Entering historical plot transfer data into SOS
- Internal Roadways are to be extended into new sections
- Removal of overgrown trees and shrubs
- Pruning of trees and shrubs
- Monument permits and staking for monument placement
- Cemetery master plan currently underway



The background is a solid teal color. Overlaid on this are stylized, layered shapes representing a mountain range and a body of water. The mountains are depicted as overlapping, rounded silhouettes in varying shades of teal, with the foreground mountains being a darker shade. A winding, irregular shape representing a lake or river is positioned in the lower half of the image, also in a teal shade. The overall aesthetic is minimalist and modern.

# Parks and Trails

---

# Parks

## 9 Waterfront Properties

- Northwinds Beach
- Delphi Park
- Council Beach
- Peasemarth
- Bayview
- Little River Park
- Thornbury Harbour
- Lora Bay Park
- Lions Park
- Heathcote Park
- Riverwalk



## • 2 Dog Parks

- Heritage Park
- Moreau Park

## • 5 Recreational Parks

- Moreau Park, Tomahawk Recreation Complex, Boyer Park, Bayview Park, Nipissing Ridge Park.
- 1 Skateboard Park - Moreau Park
- 3 Double Tennis Courts - Bayview Park, Nipissing Ridge, Boyer Park
- 1 Pickleball Court – Tomahawk
- 18 Passive Parks
- Bruce St. Parkette, Bob Gamble Park, Cedar Grove, Chamber of Commerce, Harbour Hill Parkette, Hester St. Parkette, Hillcrest Park
- Jack Acres Memorial Park, Smith Memorial Park, Ravenna Park, Jozo Weider, Heritage Park, Nipissing Ridge Park, Timmons Park, Wyandot Park, Craigleith Meadows, Fireman's Park

## • 99 Acres of Undeveloped Open Space

# Parks

## Maintenance of Municipal Properties

- Grass maintenance 3500 hrs.
- Tree maintenance 1438 hrs.
- Number of trees planted 650
- 6 washrooms (cleaned twice daily 7 days a week from June 1 to mid October) 2 shifts on the weekends to 8:00pm
- Garbage collection 7 days a week in all parks including BIA receptacles in Thornbury business area
- Cemetery, Town Hall, Library, Fire Halls and Harbour all parks and Trails
- Maintenance of gardens in parks and municipal properties

## Winter Snow Removal

- |   |  |  |
|---|--|--|
| <ul style="list-style-type: none"><li>• Town Hall</li><li>• Hester Street Parkette</li><li>• Library</li><li>• Cemetery</li><li>• BVO</li><li>• Chamber of Commerce Office</li><li>• Dog Park</li><li>• Tenth Line Water Booster Station</li><li>• Sunset Blvd. Pumping Station</li></ul> | <ul style="list-style-type: none"><li>• Mill Street Pumping Station</li><li>• Elgin St. Pumping Station</li><li>• Moore Crescent Pumping Station</li><li>• Smith Memorial Park</li><li>• BVCC &amp; Arena</li><li>• Water Operations Centre</li><li>• Water Treatment Plant</li><li>• Thornbury Wastewater Plant</li></ul> | <ul style="list-style-type: none"><li>• Thornbury Water Reservoir</li><li>• Bayview Avenue Pumping Station</li><li>• Camperdown Water Reservoir</li><li>• Delphi Booster Station</li><li>• Portion of the Georgian Trail from Bruce St. to McCauley St.</li></ul><br><ul style="list-style-type: none"><li>❖ Times lots plowed – 76</li><li>❖ Times lots sanded – 46</li><li>❖ Times lots inspected – 33</li></ul> |
|---|--|--|

# Parks

- Maintenance of BIA flower baskets and street banners. Flowers watered daily from June 1 to mid-October.
- Logistical and on-site support for BIA events.
- Maintenance and Inspections of Playgrounds.
  - 9 Playgrounds
    - Little River Park, Moreau Park, Bayview Park, Hillcrest Park, Heritage Park, Timmins Parkette, Northwinds Beach, Ravenna Park, Council Beach
- Playgrounds are inspected monthly
- Pavilions
  - Bayview Park, Lions Park, Cedar Grove, Delphi Park



# Sports Fields/Courts

- Soccer Fields
  - 3 Regulation sized soccer pitches
  - Fields lined weekly
  - 2 Mini soccer pitches
  - Used primarily by the Blue Mountain Soccer Club (BMSC) for minor leagues
- Baseball Diamond
  - Moreau Park 3 Diamonds
  - 162 games/practices in 2021 diamonds dragged and lined before each game
  - Used primarily by the Beaver Valley Athletic Association (BVAA) for minor leagues
- Pickleball & Tennis Courts
  - 1 Outdoor Pickleball Court – 4 Playing Surfaces
  - 3 Tennis Courts – 2 Playing surfaces per Court



# Trails

- 43 Kilometers of Town maintained trails
  - 22 Kilometers of trails throughout developments in the municipality
  - 21 Kilometers of Georgian Trail
  - 509,408 pedestrian/cycle count in 2022
- Trails generally open in April and are closed at the end of October
- Trails are inspected monthly
- Staff provide maintenance and upgrades to all trails which include tree maintenance, cutting back trees, signage, grass maintenance, grading and top dressing, noxious weed control, garbage collection
- Winter Trail
- Georgian trail and Tomahawk trail groomed daily when there is sufficient snow
- Groomed 98 times in 2021-22



# Thank you for your time



---

Community Services Department