



Thornbury West Phase 1 Parkettes

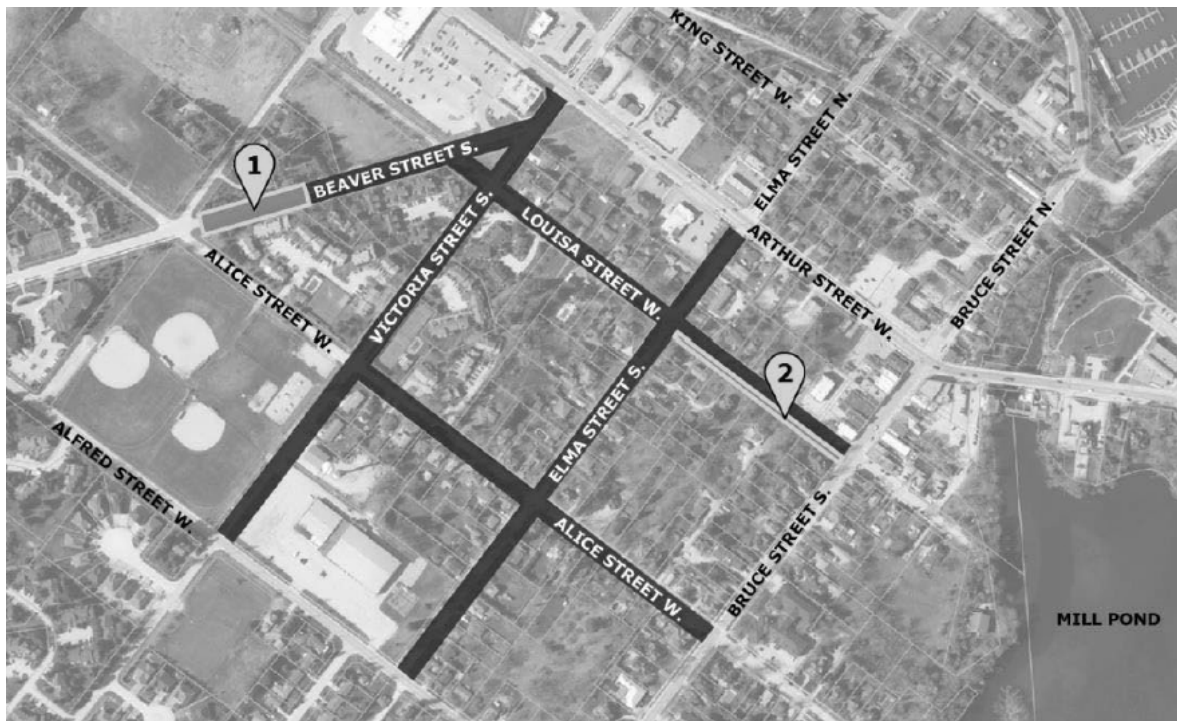
Project Introduction

The Town of The Blue Mountains is reconstructing several roads in Thornbury West to address ageing underground infrastructure. Phase 1 improvements to the road network have created the opportunity for two new parkettes in this established neighbourhood.

The Town is conducting this survey to gauge the community's interest in each parkette, and to provide preliminary insight into their future designs. It's estimated to take 6-10 minutes to complete.

Legend

1. Location of proposed Beaver Street South Parkette
2. Location of proposed Louisa Street West Parkette





Thornbury West Phase 1 Parkettes

Beaver Street South Parkette - Overview

The Beaver Street South Parkette is intended as a neighbourhood park with passive use. The design objectives include:

- Provide a multi-use trail to promote active transportation options
- Where possible, ensure the main features are accessible to all users in accordance with the Accessibility for Ontarians with Disabilities Act
- Buffer views of adjacent private properties
- Maintain sightlines into the park for safety
- Provide appropriate furnishings (seating, waste receptacles, signage, etc.) to support park amenities





Thornbury West Phase 1 Parkettes

Beaver Street South Parkette - Design Concepts

Below are two preliminary design concepts incorporating aspects of the design objectives. Please review each concept and indicate your preference in the question at the bottom of the page.

Concept 1

Concept Features

1. Park gateway with bench seating and accent planting beds
2. Multi-use trail
3. Coniferous trees for screening and to delineate park limits along condominium
4. Open lawn space and snow storage

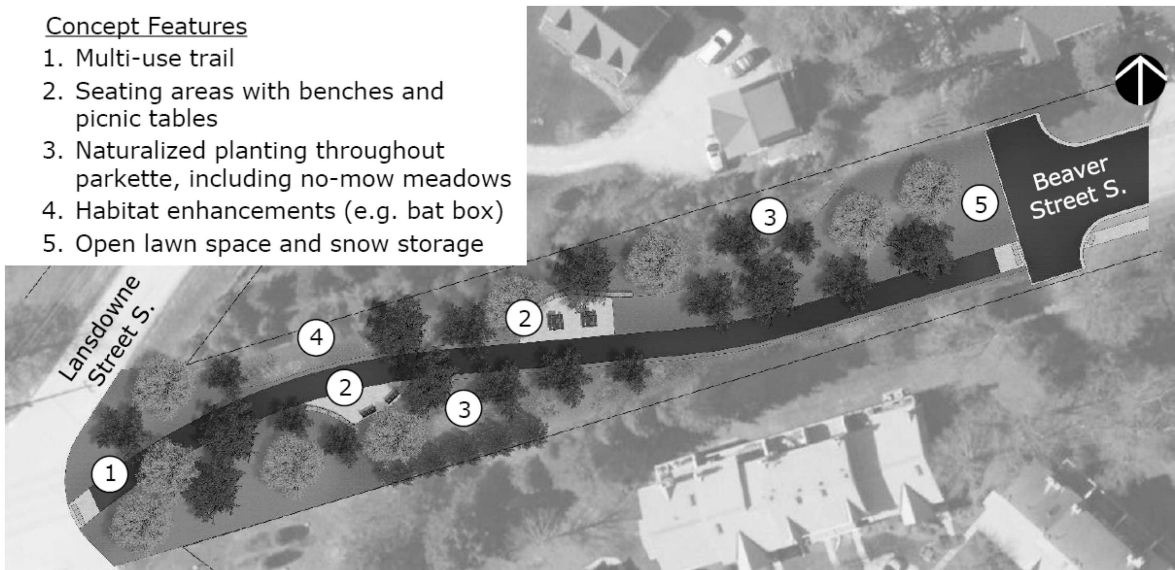




Concept 2

Concept Features

1. Multi-use trail
2. Seating areas with benches and picnic tables
3. Naturalized planting throughout parkette, including no-mow meadows
4. Habitat enhancements (e.g. bat box)
5. Open lawn space and snow storage





* Which concept do you prefer for the Beaver Street South Parkette?

- ☐ Concept 1
- ☐ Concept 2
- ☐ I don't support the construction of the Beaver Street South Parkette

Do you have any additional comments on the proposed designs or ideas for amenities?

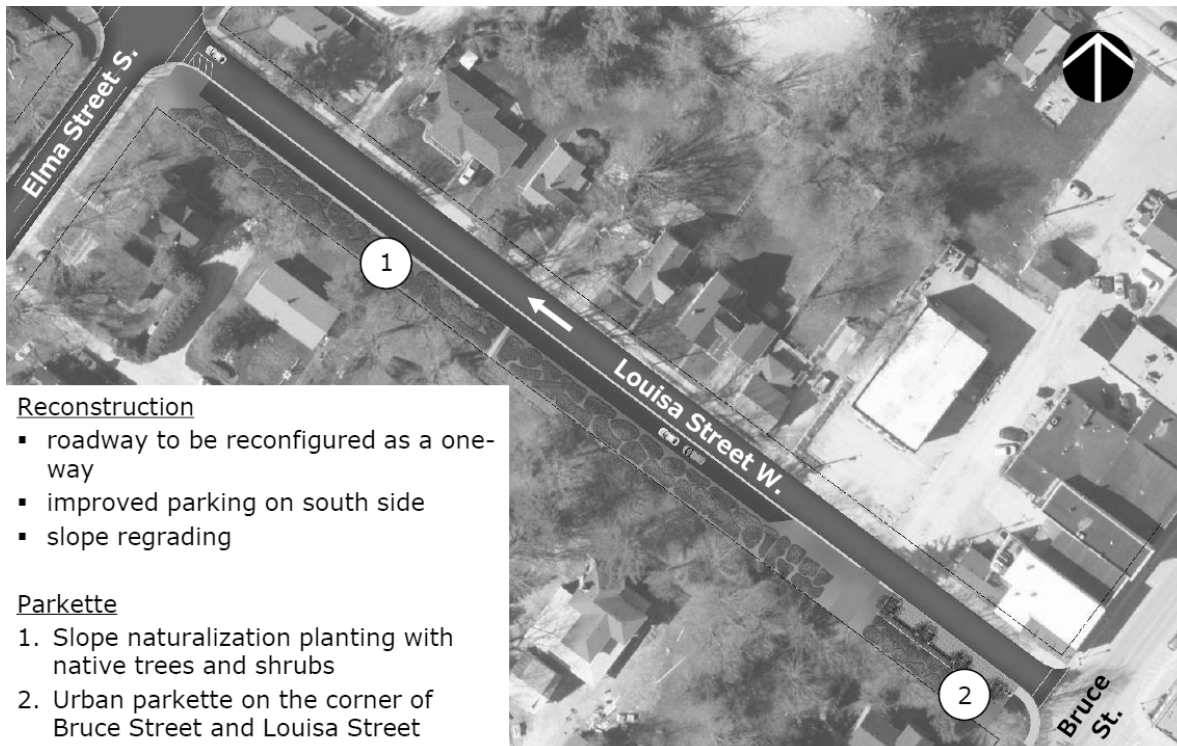


Thornbury West Phase 1 Parkettes

Louisa Street West Parkette - Overview

The Louisa Street West Parkette is intended to support downtown businesses with supplemental seating, and expand the urban forest on the Louisa Street embankment. The design objectives include:

- Where possible, ensure the main features are accessible to all users in accordance with the Accessibility for Ontarians with Disabilities Act
- Maintain sightlines into the park for safety
- Provide appropriate furnishings (seating, waste receptacles, signage, etc.) to support park amenities
- Utilize native, site-appropriate species, where possible



Reconstruction

- roadway to be reconfigured as a one-way
- improved parking on south side
- slope regrading

Parkette

1. Slope naturalization planting with native trees and shrubs
2. Urban parkette on the corner of Bruce Street and Louisa Street



Thornbury West Phase 1 Parkettes

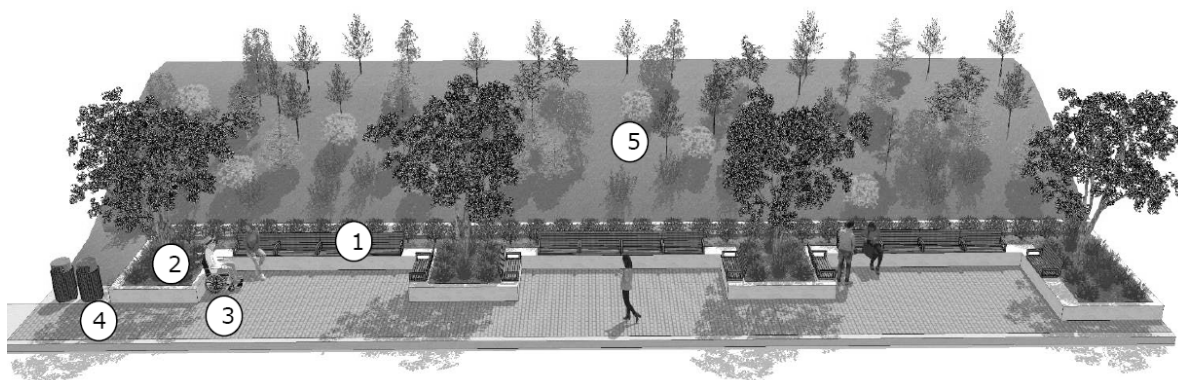
Louisa Street West Parkette - Design Concepts

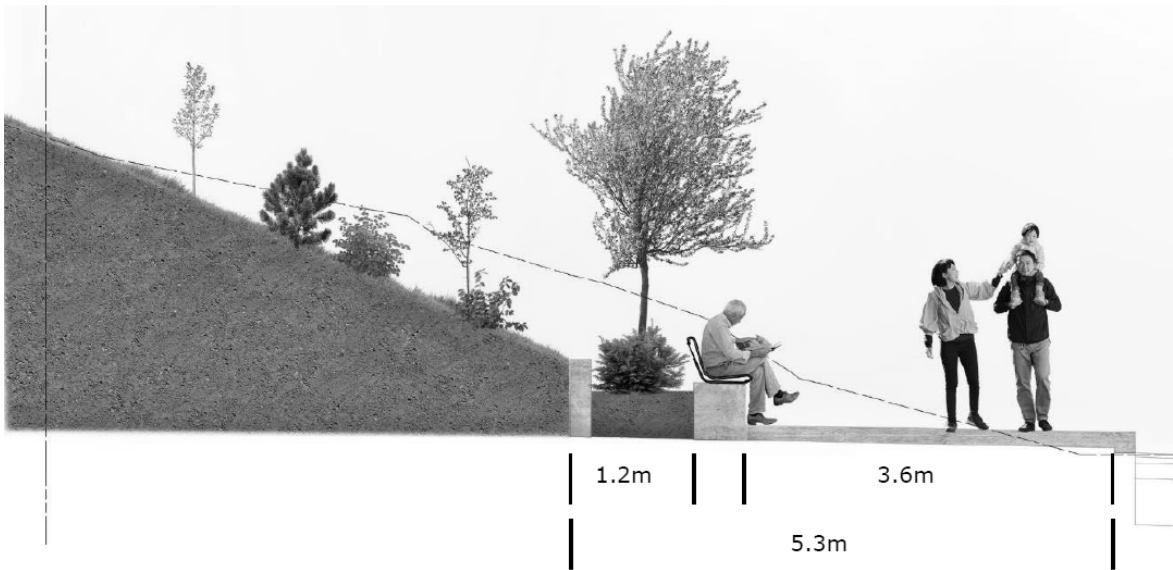
Below are two preliminary design concepts incorporating aspects of the design objectives. Please review each concept and indicate your preference in the question at the bottom of the page.

Concept 1

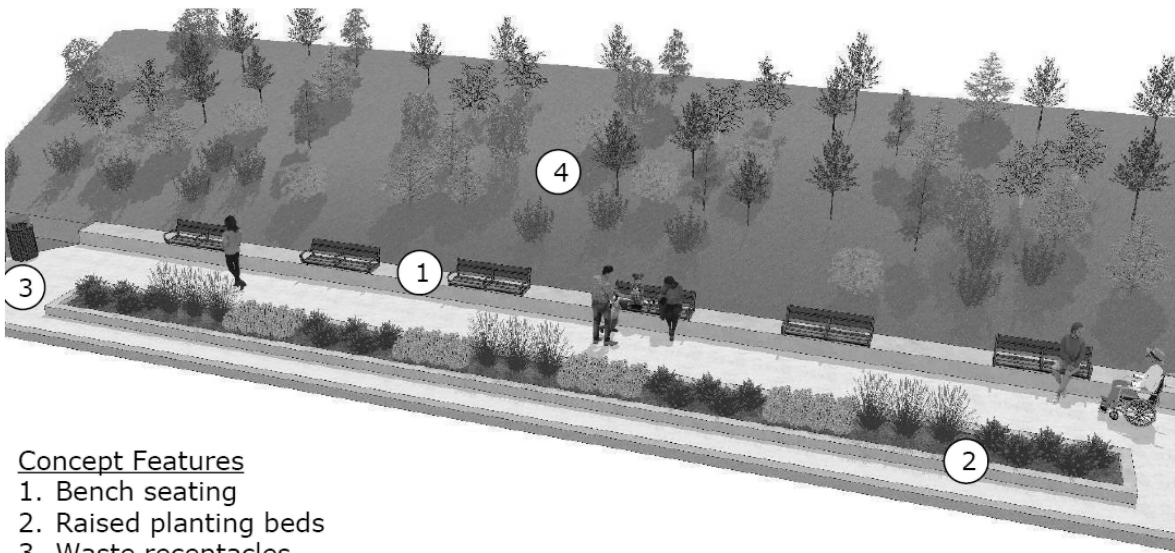
Concept Features

1. Clustered bench seating areas
2. Raised planting beds with ornamental shade trees
3. Accessible seating options
4. Waste receptacles
5. Slope naturalization planting



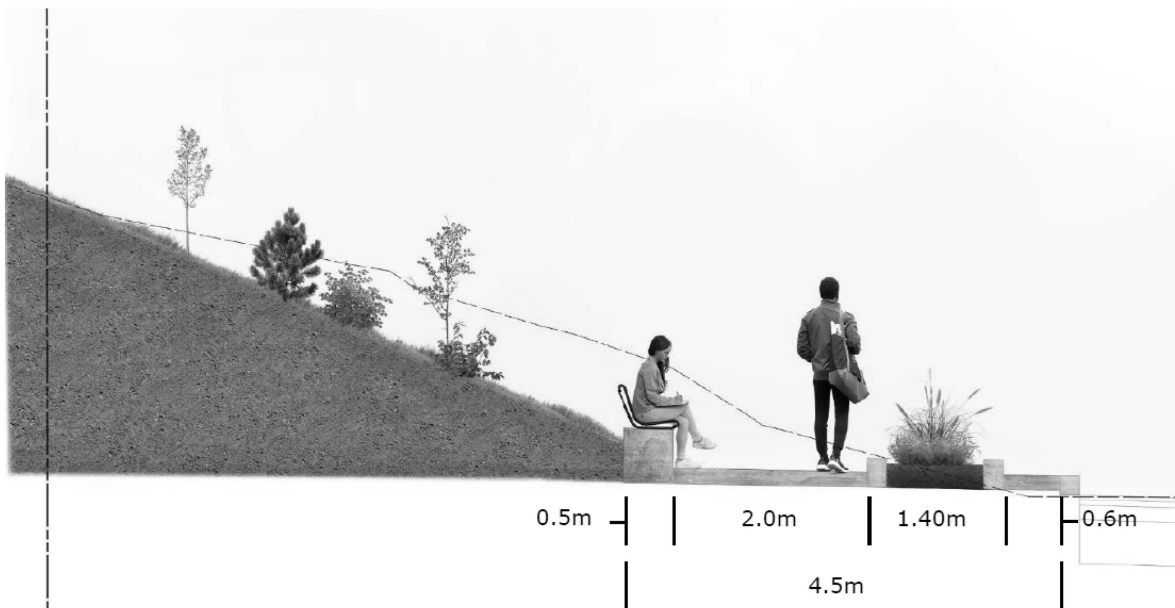


Concept 2



Concept Features

1. Bench seating
2. Raised planting beds
3. Waste receptacles
4. Slope naturalization planting





* Which concept do you prefer for the Louisa Street West Parkette?

- ☐ Concept 1
- ☐ Concept 2
- ☐ I don't support the construction of the Louisa Street West Parkette

Do you have any additional comments on the proposed designs or ideas for amenities?



Thornbury West Phase 1 Parkettes

Louisa Street West Parkette - Furnishings

Below are two preliminary options for furnishing styles. Please review each option and indicate your preference in the question at the bottom of the page.

Option 1 - Victorian Furnishings



(Image for illustrative purposes only)

- Similar style to existing downtown site furnishings
- Limited to steel slats for bench-top seating in Victorian style

Option 2 - Contemporary Furnishings



(Image for illustrative purposes only)

- Wood slat/recycled plastic options available

* Which furnishings do you prefer for the Louisa Street West Parkette?

- ☐ Option 1 - Victorian
- ☐ Option 2 - Contemporary

Do you have any additional comments on the proposed furnishings?



Thornbury West Phase 1 Parkettes

Louisa Street West Parkette - Ground Surface

Below are three preliminary options for ground surface treatments. Please review each option and indicate your preference in the question at the bottom of the page.

Option 1 - Tumbled Concrete Unit Paving



(Image for illustrative purposes only)

- Consistent with the paving of the rest of Thornbury's downtown core
- Highest cost

Option 2 - Mix of Concrete and Unit Paving



(Image for illustrative purposes only)

- Differentiate between walkway and seating areas

Option 3 - Concrete



(Image for illustrative purposes only)

- Compatible with Louisa Street sidewalk
- Lowest cost
- Clean and contemporary

* Which ground surface do you prefer for the Louisa Street West Parkette?

- ☐ Option 1 - Tumbled Concrete Unit Paving
- ☐ Option 2 - Mix of Concrete and Unit Paving
- ☐ Option 3 - Concrete

Do you have any additional comments on the proposed ground surfaces?



Thornbury West Phase 1 Parkettes

Contact and Demographic Information

* Contact Information

Name

Email Address

Phone Number

* What is your age?

- ☐ Under 18
- ☐ 18-24
- ☐ 25-34
- ☐ 35-44
- ☐ 45-54
- ☐ 55-64
- ☐ 65+

* Please select the option that best describes yourself:

- ☐ Full-time resident (lives in The Blue Mountains year-round)
- ☐ Part-time resident (lives in The Blue Mountains for 6 to 11 months per year)
- ☐ Seasonal resident (lives in The Blue Mountains for less than 6 months per year)
- ☐ I own property, but I do not live in The Blue Mountains
- ☐ I am not a resident or property owner in The Blue Mountains

Where is your property located in the Town of The Blue Mountains

Do you have any other comments about this project that were not addressed in this survey?