

Introduction to Clarksburg



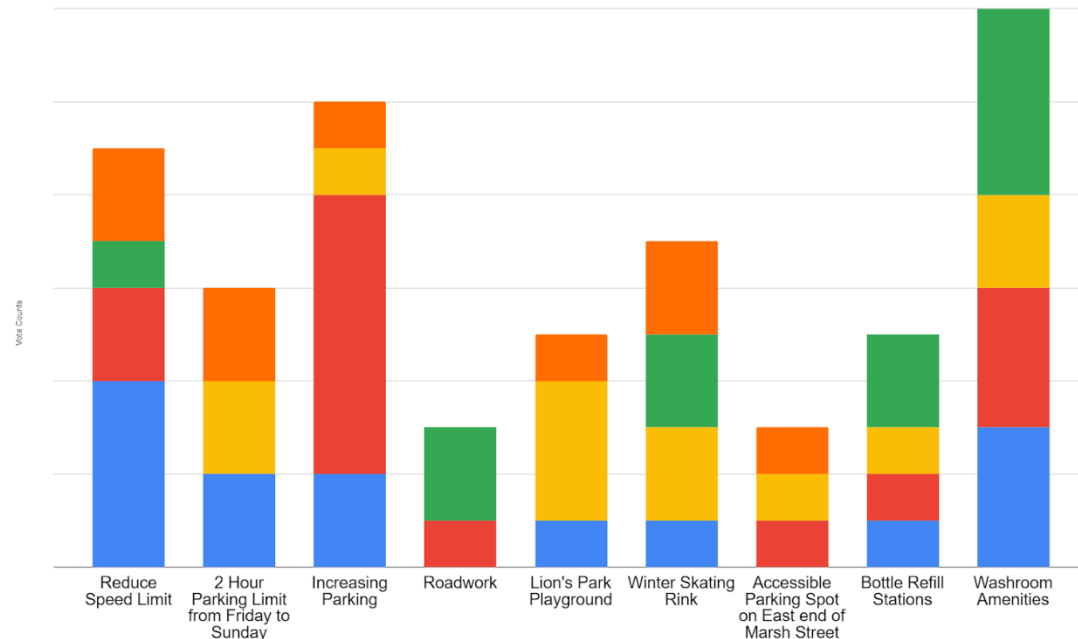
Infrastructure Priorities

Survey results

- Reduce Speed Limit - Increases pedestrian safety, wildlife safety, and allows people who drive by to see Clarksburg and the wonderful things we have to offer
- 2 Hour Parking Limit from Friday to Sunday - Ensures that all local businesses will have parking available for their customers, regardless of ongoing events
- Increasing Parking - Increases the access to downtown Clarksburg so that people can walk and shop downtown. Could be an issue due to lack of parking spaces and/or lack of awareness for available parking spaces
- Roadwork - Enhances the appearance of downtown and increases safety for bikers and drivers
- Lion's Park Playground
- Winter Skating Rink
- Accessible Parking Spot on East end of Marsh Street
- Bottle Refill Stations
- Washroom Amenities

To summarize, these are the top 3 priorities:

- Washroom amenities
- Reducing speed limit
- Increasing Parking



Priority Ranking Legend



Examples of private revitalization efforts



Corner of Marsh and Clark – Art gallery, flower shop, ice cream, workout space, e-bike rentals, event centre and more



Before



After

More revitalization in progress



Marsh Street Centre patio project



PJ Mart rejuvenation

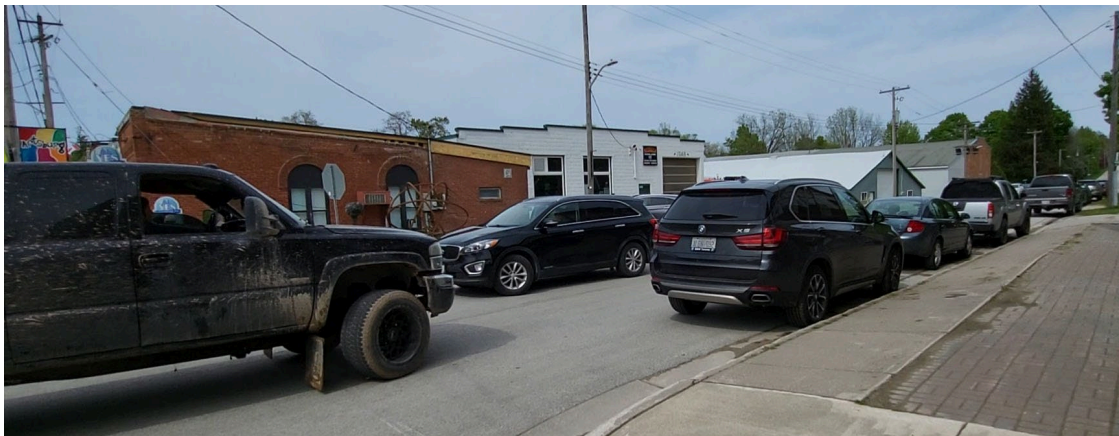


Some key issues

Which we cannot resolve with your help



- Parking in places which are not parking spaces
- Parking all day long – detriment to retail
- Speeding through regardless of traffic or pedestrians
- U-turns and the bottom of Marsh and Clark
- And then some



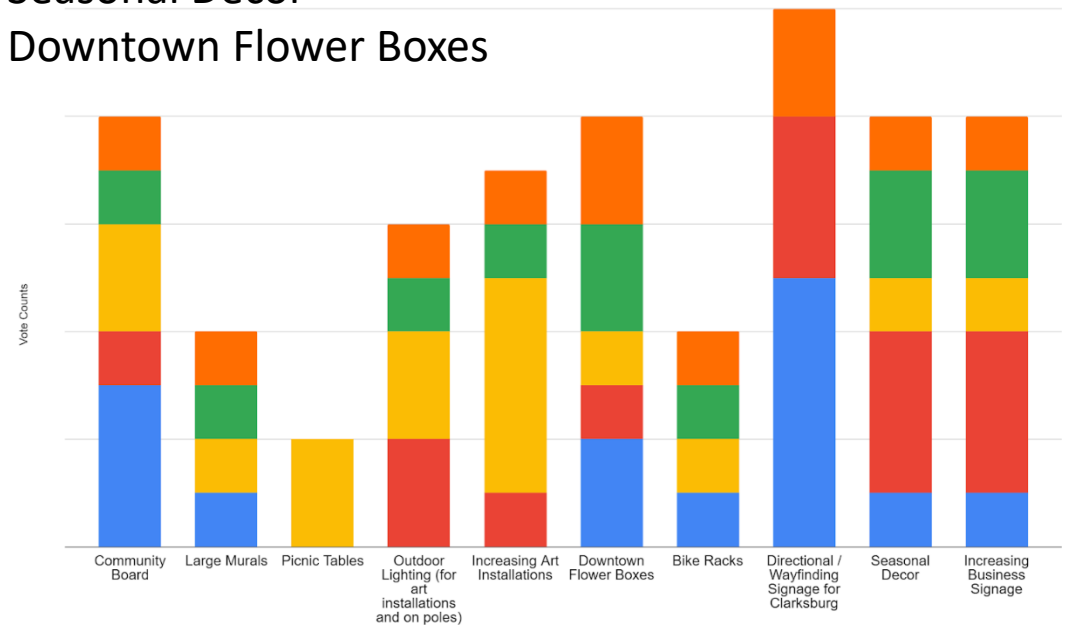
Beautification Priorities

Survey results

- Community Board
 - Large Murals
 - Picnic Tables
 - Outdoor Lighting
 - Increasing Art Installations
 - Downtown Flower Boxes
 - Bike Racks
 - Seasonal Decor
 - Increasing Business Signage
- Directional / Wayfinding Signage for Clarksburg - Provides people with a better notion of where we are located and prompt Clarksburg as a destination location for individuals driving by.

Summarized, our beautification priorities moving forward are:

- Increasing Directional / Wayfinding signage
- Community Board
- Increasing Business Signage
- Seasonal Decor
- Downtown Flower Boxes



Priority Ranking Legend





Before



After

We love our new sidewalks, and we want to see more of these commitments in Clarksburg, from the Town of the Blue Mountains.

We will be back in the near future with data and recommendations.

Thank you.