

**THE CORPORATION OF THE TOWN OF THE BLUE MOUNTAINS**

**By-Law Number 2022-**

**Being a By-law to regulate the parking, standing and stopping of motor vehicles on roads and properties under the jurisdiction of the Town of The Blue Mountains.**

**TABLE OF CONTENTS**

1.0 - Authority and Short Title

2.0 - Applicability and Scope

3.0 - Definitions and Interpretation

4.0 - General Provisions

5.0 - General Stopping and Parking Regulation

6.0 - Stopping and Parking Restrictions and Prohibitions on Certain Highways

7.0 - Private or Municipal Property

8.0 - Accessible Parking

9.0 - Paid Parking Area

10.0 - Compliance

11.0 - Offences and Penalties

12.0 - Vehicle Towing

13.0 - Severability

14.0 - By-laws Repealed

15.0 - Coming Into Force

Schedules

## THE CORPORATION OF THE TOWN OF THE BLUE MOUNTAINS

### By-Law Number 2022-

**Being a By-law to regulate the parking, standing and stopping of motor vehicles on roads and properties under the jurisdiction of the Town of The Blue Mountains.**

**WHEREAS** section 8(1) of the *Municipal Act, 2001, S.O. 2001, c. 25*, as amended, provides that the powers of a municipality shall be interpreted broadly as to confer broad authority on a municipality to (a) enable it to govern its affairs as it considers appropriate, and (b) enhance its ability to respond to municipal issues;

**AND WHEREAS** section 11(3) and 11(8) of the *Municipal Act, 2001, S.O. 2001, c. 25*, as amended, provide for lower-tier municipalities to pass by-laws respecting matters pertaining to highways, including parking and traffic on highways, and parking, except on highways;

**AND WHEREAS** Section 100.1 of the *Municipal Act, 2001, S.O. 2001, c. 25* ("The *Municipal Act, 2001*") enables a local municipality to enact a by-law to regulate or prohibit the parking or leaving of a vehicle on privately-owned land that is used as a parking lot without the consent of the owner of the land;

**AND WHEREAS** Section 101 of the *Municipal Act, 2001, S.O. 2001, c. 25* enables a local municipality to enact a by-law to provide for the removal and impounding or restraining and immobilizing of a motor vehicle, at the motor vehicle owner's expense, parked or left on land in contravention of the by-law;

**AND WHEREAS** Section 101 (3) of the *Municipal Act, 2001, S.O. 2001, c. 25* provides that where signs are erected on land specifying conditions on which a motor vehicle may be parked or left on the land or regulating or prohibiting the parking or leaving of a motor vehicle, a motor vehicle parked or left on the land contrary to the conditions or prohibition shall be deemed to have been parked or left without consent;

**AND WHEREAS** Section 102.1 of the *Municipal Act, 2001, S.O. 2001, c. 25* and Ontario Regulation 333/07 provide that a municipality may require a person to pay an administrative penalty with respect to the parking, standing or stopping of vehicles

**AND WHEREAS** Section 170 (15) of the *Highway Traffic Act, R.S.O. 1990*, applies in the instance of the removal and impounding of a motor vehicle on privately owned land

**AND WHEREAS** section 391(1) of the *Municipal Act, 2001, S.O. 2001, c. 25*, as amended, provides for a municipality to impose fees or charges on persons for services or activities it provides and for the use of its property;

**AND WHEREAS** the Council of the Corporation of the Town of The Blue Mountains deems the regulation of parking necessary to ensure the safety of drivers and pedestrians, the effective flow of traffic, and the maintenance of community standards;

**NOW THEREFORE** the Council of the Corporation of the Town of The Blue Mountains enacts this By-law to regulate parking of motor vehicles within the boundaries of the Town of The Blue Mountains.

#### 1.0 Authority and Short Title

(1) The By-law shall be known and referenced as the "Parking By-law."

#### 2.0 Applicability and Scope

(1) This By-law applies to the Parking of Motor Vehicles on:

- a. Highways under the jurisdiction of the Town;
- b. Town Facilities; or
- c. Municipal or Private Property.

(2) This By-law shall not, if compliance therewith would be impracticable, apply to:

- a. any ambulance, police or fire department vehicles or public utility emergency vehicles; or
- b. vehicles or Municipal Law Enforcement Officers actually engaged in works undertaken for or on behalf of the Town or a public transit commission.

(3) Parts 5.0 and 6.0 shall not apply to public transit vehicles, where compliance therewith would be impractical due to the placement of the bus stop for public transit and School Busses.

### **3.0 Definitions and Interpretation**

(1) In this By-law:

“Accessible Parking Permit” means a parking permit issued to a Person with a Disability under the Highway Traffic Act, R.S.O. 1990, c. H.8 or a permit, number plate or other marker or device issued by a jurisdiction outside of Ontario and recognized under that Highway Traffic Act;

“Apartment Building” Means a building consisting of four (4) or more dwelling units, the occupants of which have the right to use common halls, stairs, elevators and yards;

“Boulevard” means that part of a Highway that is not used, or intended to be used, for vehicular travel by the general public, and is situated between the travelled portion of the road and the adjoining property line including the 0.3-metre reserve where applicable;

“Commercial Motor Vehicle” means a Motor Vehicle having permanently attached thereto a truck or delivery body and includes ambulances, hearses, casket wagons, fire apparatus, buses and tractors used for hauling purposes on the Highways, and any commercial vehicle as defined in the Highway Traffic Act;

“Crosswalk” means that part of a Highway at an Intersection that is included within the connections of the lateral lines of the sidewalks on opposite sides of the Highway measured from the curbs, or in the absence of curbs, from the edges of the roadways, or any portion of a roadway at an Intersection or elsewhere distinctly indicated for pedestrian crossing by signs or by lines or other markings on the surface of the roadways;

“Dedicated Cycling Facility” means any path intended exclusively for cycling traffic;

“Designated Building” means a structure which is used for the accommodation of the public or for the gathering or assembling of people and includes an Apartment Building, Hospital, Hotel, Motel, Shopping Centre, Townhouse, Industrial Building, and Town Facility;

“Designated Parking Space” means a parking space designated under this by-law for the exclusive use of a Motor Vehicle displaying an accessible parking permit in accordance with the requirements of the Highway Traffic Act and the regulations made thereunder and this By-law;

“Director of Legal Services” means the Director Legal Services or designate;

“Director of Operations” means the Director of Operations for the Town or their designate;

“Driveway” means an approved, paved vehicular access-way providing access from a Highway to a building or property, loading space, an approved parking area or garage, and does not include a public sidewalk;

“Fire Chief” means the Chief of the Blue Mountains Fire Department or designate;

“Fire Department Connection” means a device being a fire department siamese connection attached to an exterior Designated Building wall or in the vicinity of a Designated Building used for the connection of fire hoses and the delivery of water to a sprinkler or standpipe system in a Designated Building and designated by this By-law as a Fire Department Connection;

“Fire Department Connection Sign” means permanently installed legible signs of a minimum size of 30 centimetres by 60 centimetres that:

- indicates that Parking is prohibited; and
- is in all other ways acceptable to the Fire Chief;

“Highway” means a common and public highway, Street, avenue, parkway, Driveway, square, place, bridge, viaduct or trestle, any part of which is intended for or used by the general public for the passage of vehicles and includes the area between the lateral property lines thereof, and may include a Private Roadway;

“Hospital” means a private or public hospital as defined in the Private Hospitals Act, R.S.O. 1990, c. P.24 or the Public Hospitals Act, R.S.O. 1990, c. P.40;

“Hotel” - means a building or part of a building used primarily for the purposes of providing temporary sleeping accommodation to the public, but where no individual private cooking facilities are provided;

“Industrial Building” means a building or structure used for the purpose of manufacturing, assembling, making, preparing, inspections, ornamenting, finishing, treating, altering, repairing, warehousing, storing or adapting for sale any goods, substance, article or thing, or any part thereof, and the storage of building and construction equipment and materials;

“Intersection” means the area embraced within the prolongation or connection of the lateral curb line or, if none then of the lateral boundary lines of two or more Highways that join one another at an angle, whether or not one Highway crosses the other;

“Laneway” means a public vehicular-access route exclusively at the side and/or rear of one or more properties, whether such access route is privately or municipally owned; however, it does not include private property not intended for such public access;

“Motel” means a building or group of buildings no more than two storeys in building height used mainly for the purpose of providing temporary sleeping accommodation to the public, but where no individual private cooking facilities are provided;

“Motor Vehicle” includes an automobile, motorcycle, motor assisted bicycle unless otherwise indicated in the Highway Traffic Act, and any other vehicle propelled or driven otherwise than by muscular power, but does not include a streetcar, or other motorized vehicles running only upon rails, or a motorized snow vehicle, traction engine, farm tractor, self- propelled implement of husbandry or road-building machine within the meaning of the Highway Traffic Act;

“Municipal Law Enforcement Officer” means a person appointed or employed by the Town as a municipal law enforcement officer;

“Municipal or Private Property” means any open area or portion of a structure other than a Highway, intended for the temporary Parking of vehicles and on which there are Designated Parking Spaces, whether their use involves the payment of a fee or otherwise;

“Nursing Home” means a nursing home as defined in the Nursing Homes Act, R.S.O. 1990, c.N.7;

“Occupant” means any person or persons over the age of 18 years in possession of property;

“Official Sign” means any sign or roadway, curb or sidewalk marking, or other device placed or erected on a Highway under the authority of this by- law and specified in the Manual of Uniform Traffic Control Devices of Ontario for the purpose of regulating, warning and guiding traffic;

“Owner” means:



- the registered owner of the land on which the building is located or, if the building is owned separately from the land on which the building is located, the owner of the building, unless the person is a person prescribed in the Ontario Building Code, O. Reg.332/12;
- the person that is responsible for maintaining the building or part of the building subject to a building condition evaluation program, unless the person is a person prescribed in the Ontario Building Code; and
- such other persons as may be prescribed in the Ontario Building Code;

“Park” or “Parking” when prohibited means the Standing of a vehicle, whether occupied or not, except when Standing temporarily for the purpose of and while actually engaged in loading or unloading merchandise or passengers;

“Person with a Disability”: means a person with any degree of physical disability, infirmity, malformation or disfigurement that is caused by bodily injury, birth defect or illness and, without limiting the generality of the foregoing, includes diabetes mellitus, epilepsy, a brain injury, any degree of paralysis, amputation, lack of physical co-ordination, blindness or visual impediment, deafness or hearing impediment, muteness or speech impediment, or physical reliance on a guide dog or other animal or on a wheelchair or other remedial appliance or device;

“Police Officer” means a member of the Ontario Provincial Police;

“Private Roadway” means any private road, private Driveway, lane, laneway, ramp or other means of vehicular access to or egress from a building or structure and it may include part of a parking lot;

“Public Hall” means a building, including a portable building or tent with a seating capacity for over 100 persons that is offered for use or used as a place of public assembly, but does not include a theatre or a building, except a tent, used solely for religious purposes;

“Resident Permit” means a permit or pass issued by the Town, which exempts the holder from paying parking fees in designated Paid Parking Areas;

“School Bus” means a bus that:

- is painted chrome yellow; and
- displays on the front and rear thereof the words “school bus” and on the rear thereof the words “do not pass when signals flashing”;

“School Bus Loading Zone” means any area marked by signs indicating such area to be for the sole use of School Buses engaged in receiving or discharging passengers;

“Shopping Centre” means a building or a unified group of buildings on a lot designed, developed and managed as a single operating unit for which Parking is provided in common off-street areas, as opposed to a business area comprising 14 unrelated individual commercial establishments;

“Stand” or “Standing” when prohibited means the halting of a vehicle, whether occupied or not, except for the purpose of and while actually engaging in receiving or discharging passengers;

“Stop” or “Stopping” when prohibited, means the halting of a vehicle, even momentarily, whether occupied or not, except when necessary to avoid conflict with other traffic or in compliance with the directions of a Police Officer or of a traffic control sign or signal;

“Street” includes that part of a Highway used or intended to be used for vehicular travel by the general public;

“Town” means The Town of The Blue Mountains;

“Town Facility” means all municipal buildings and their appurtenant lands owned or controlled by the Town and includes, but is not limited to, libraries, schools, pools, arenas, halls, skating rinks and administrative buildings;

“Townhouse” - Means a building containing three (3) or more dwelling units, each of which has direct access from the outside ground level and shares two (2) above ground party walls with abutting dwelling units; and a unit at the end of a row of townhouse dwellings and sharing only one (1) above ground party wall shall also be a townhouse dwelling;

“Unauthorized Motor Vehicle” means a Motor Vehicle that does not have affixed thereto or is not clearly displaying a current Accessible Parking Permit in accordance with the Highway Traffic Act and the regulations thereunder, or an On-Street Parking Permit, Visitor Parking Permit, Construction Permit or authority issued under this By-law.

#### **4.0 General Provisions**

- (1) The Director of Operations is authorized to erect “No Parking” signs:
  - a. when in the Director of Operations opinion an emergency has arisen, making it desirable to prohibit Parking on a Highway;
  - b. to facilitate the removal of snow, ice or debris from a Highway; and
  - c. to facilitate the construction or repair of roadways, curbs, gutters, sewers and water mains.
- (2) Where any expression of time occurs or where any hour or other period of time is stated, the time referred to shall be standard time except in periods when daylight saving time is in effect, in which periods it shall be daylight saving time.
- (3) The Schedules referred to in this By-law shall form part of this By-law

#### **5.0 General Stopping and Parking Regulation**

- (1) No person shall Park or Stop any Motor Vehicle on any Highway or portion thereof except as follows:
  - a. on the right-hand side of the Street having regard for the direction in which the Motor Vehicle had been proceeding;
  - b. with the Motor Vehicle parallel to the right front and rear wheels not more than 0.15 metres from the limit of the Highway.
- (2) The provisions of section 5.0(1) do not apply where angle parking is permitted.
- (3) Where angle parking is permitted on a Highway, no person shall Stop or Park any vehicle except at an angle of 45 degrees from the curb or boundary of the roadway with the front end of the Motor Vehicle at such curb or boundary.
- (4) Where angle parking spaces are designated by lines painted on the roadway, no person shall Stop or Park any vehicle except within an area designated as a parking space.
- (5) Where Parking is permitted on a Highway designated for one-way traffic, the provisions of section 5.0(1) shall include the word “left”, wherever the word “right” is used.
- (6) No person shall Stop a Motor Vehicle on a Highway in any of the following places:
  - a. on or over a footpath or Crosswalk;
  - b. within an Intersection;
  - c. within or on a designated pedestrian crossover;
  - d. within 9 metres of a pedestrian crossover;
  - e. alongside or across the Highway from any excavation or obstruction in the roadway when the free flow of traffic would thereby be impeded;
  - f. subject to section 5.0(3) above, on the roadway beside any Stopped or Parked Motor Vehicle (double parking);

- g. upon any bridge or within any tunnel or underpass; and
- h. on any centre strip separating two roadways or adjacent to either side or ends of such centre strip;
- i. on any portion of the Boulevard, except for a Driveway, including its apron;
- j. on a Dedicated Cycling Facility.
- k. In a School Bus Loading Zone.

(7) No person shall Park or Stop a Motor Vehicle on or over a sidewalk.

(8) No person shall Park a Motor Vehicle within three (3) metres of a fire hydrant.

(9) No person shall Park a Motor Vehicle on a Highway:

- a. between the hours of 2:00 a.m. and 7:00 a.m., from November 1 until April 15 of the following year;
- b. in front of or within 0.6 metres of a Private Roadway;
- c. within nine (9) metres of an Intersection as measured from the end of the corner radius;
- d. within 15 metres of the nearest rail of any level crossing of a railway;
- e. where the Street has an overall width of less than 6 metres;
- f. within six (6) metres of a point on a curb or at the edge of the roadway in front of the public entrance to or exit from a Hotel, or a theatre, or a Public Hall, while the premises are opened to the public;
- g. in such a position as will prevent the removal of any other vehicle previously Parked;
- h. for the purpose of washing, greasing or repairing the Motor Vehicle, except for such repairs as have been necessitated by an emergency;
- i. for the purpose of displaying the Motor Vehicle for sale;
- j. so as to interfere with the clearing of snow by the Town or its agents;
- k. in such a manner as to interfere with the movement of traffic or the clearing of snow from the Highway;
- l. directly opposite a Motor Vehicle Stopped or Parked on the other side of the roadway, where the width of the roadway is less than 9 metres;
- m. within six (6) metres of a point designated as a bus stop;
- n. within 150 metres of fire fighting apparatus while said apparatus is engaged in fighting a fire, or when directed by a Police Officer or member of the Fire Department;
- o. within seven (7) metres of the Driveway to a fire hall on the same side of the Street on which the fire hall is located, or within thirty (30) metres of the Driveway to a fire hall on the opposite side of the Street;
- p. on any portion of the Boulevard, except for a Driveway, including its apron.
- q. on a Dedicated Cycling Facility.
- r. In such a manner as to obstruct a waterfront fire lane;
- s. In a deadhead or cul-de-sac turning circle in a manner which would interfere with fire department apparatus turning;

- t. In a secondary emergency access route
- (10) No signs are required to be posted for the regulations of Sections 5.0(6), 5.0(7), 5.0(8) and 5.0(9) to be in full effect.
- (11) Where official “No Parking” signs are erected and are on display, no person shall Park any Motor Vehicle on any Highway:
  - a. within 30 metres of an Intersection as measured from the end of the corner radius;
  - b. within 25 metres of a bus stop as measured from the post for the bus stop sign;
  - c. upon that side of a Highway contiguous to any school property, between the hours of 8:00 a.m. to 6:00 p.m., Monday to Friday inclusive;
  - d. in areas designated “Police Vehicles Only”;
  - e. in areas designated as a taxicab stand (taxi cabs excluded);
  - f. in areas designated “Emergency No Parking”;
  - g. within 15 metres of a Crosswalk controlled by traffic control signals and located other than at an Intersection;
  - h. on the inside or outside curve portion of an angle bend from the beginning of curve to the end of curve;
- (12) Where official “No Stopping” signs are erected and are on display, no person shall Stop any Motor Vehicle within 15 metres of a patrolled area school crossing.
- (13) No person shall Park a Commercial Vehicle on a residential lot.

## **6.0 Stopping and Parking Restrictions and Prohibitions on Certain Highways**

- (1) Where official signs are erected and are on display, no person shall Park, Stand, or Stop a Motor Vehicle on any Highway in the designated area and during the prohibited times or days as set out in Schedule 1 of this By-law.

## **7.0 Municipal or Private Property**

- (1) No person shall Park or leave any Motor Vehicle on private property (being property that is not owned by any government) without the consent of the Owner or Occupant of the property, and on property owned or occupied by the Town or any local board of the Town, without the consent of the Town or local board.
- (2) A Motor Vehicle Parked or left contrary to this Section may be removed or impounded at the vehicle owner’s expense. The driver or owner of a Motor Vehicle Parked on private property is not liable to any penalty or to have the Motor Vehicle removed from such property or impounded pursuant to the provisions of this By-law except upon written complaint of the Owner or Occupant of the property given to a Police Officer, Municipal Law Enforcement Officer or other person appointed for the purpose of carrying out the provisions of this By-law.
- (3) Where an Owner or Occupant of property has posted authorized signs stating conditions under which a Motor Vehicle may be Parked or left on the property or that Parking or leaving a vehicle is prohibited on the property, a Motor Vehicle Parked contrary to such conditions or prohibition shall be deemed to have been Parked without consent.
- (4) An authorized sign is required to be erected at each entrance to the private property as set out in the Schedules marked with letters, commencing with “A” and continuing sequentially, of this By-law. Reference to By-law 2007-12 on any authorized sign shall be deemed to be a reference to this By-law.
- (5) To enforce this By-law on a particular property, a Municipal Law Enforcement Officer shall be deemed to have written authority of the Owner or Occupant of the property, and such

Municipal Law Enforcement Officer is not required to receive a written complaint before authorizing the removal of a Motor Vehicle from the property.

## **8.0 Accessible Parking**

- (1) A Designated Parking Space shall be:
  - a. distinctly indicated in accordance with the requirements of the Highway Traffic Act and the regulations made thereunder;
  - b. be identified by the Provincially recognized sign.
- (2) No person shall leave a Motor Vehicle Parked, Stopped or Standing in a Designated Parking Space for Persons with Disability, unless a currently valid Accessible Parking Permit has been issued in accordance with the requirements of the Highway Traffic Act and any regulations made thereunder from time to time.
- (3) An Accessible Parking Permit under 9.0(2) must be displayed on or in the Motor Vehicle in a manner that is clearly visible and legible to a Municipal Law Enforcement Officer or Police Officer standing outside the Motor Vehicle.
- (4) The driver or operator of a Motor Vehicle which displays an Accessible Parking Permit in accordance with the requirements of the Highway Traffic Act and the regulations made thereunder and this By-law shall not be required to pay an amount in excess of the normal fee paid by other users of the same parking lots or other parking facilities to which the public has access.

## **9.0 Paid Parking Areas**

- (1) Where authorized signs have been erected, the Municipal Property so signed shall be designated as a paid parking area and no Parking shall be permitted without paying the required fee or displaying a valid Resident Permit.
- (2) The Municipal Property as outlined on Schedule 2 are designated as paid parking areas and Parking thereon shall be subject to the fees as identified in the Town's Fees and Charges By-law, as amended, and the times as outlined in Schedule 2.

## **10.0 Compliance**

- (1) A Municipal Law Enforcement Officer or Police Officer may enforce the provisions of this By-law.
- (2) For purposes of Section 10.0(1), authorized individuals may enter and inspect on lands, buildings, structures or part thereof that are subject to this By-Law at any reasonable time with or without notice.
- (3) No person shall hinder or obstruct, or attempt to hinder or obstruct, any individual authorized to administer or enforce any provisions of this By-Law and who is exercising such authority or performing a duty under this By-Law.

## **11.0 Offences and Penalties**

- (1) Every person who contravenes this By-Law is guilty of an offence and upon conviction is liable to pay an administrative monetary penalty in accordance with Administrative Monetary Penalties By-law 2021-71, as amended, and as set out in Schedule 3 of this By-law.
- (2) Penalty notices indicating a contravention of this By-Law shall be issued in accordance with the Administrative Monetary Penalties By-law and this By-law.
- (3) A Police Officer or a Municipal Law Enforcement Officer may issue and attach to a Motor Vehicle found parking in contravention of this bylaw a Town of The Blue Mountains

parking violation penalty notice alleging that the provisions of this by-law have been contravened.

- (4) A Motor Vehicle owner who is served with a penalty notice under this By-Law may request a review of the matter in accordance with the Administrative Monetary Penalties By-law 2021-71, as amended.
- (5) Any Motor Vehicle which has been issued a penalty notice pursuant to this By-law and remains in contravention of the By-law for a period greater than one (1) hour from the issuance of the penalty notice may be issued a further penalty notice for the ongoing contravention of the by-law.
- (6) Where a Motor Vehicle has been left parked, stopped or standing in contravention of this by-law, the owner of the Motor Vehicle is liable for the contravention, even if the owner was not the driver of the vehicle at the time of the contravention of this by-law, and the owner is liable to the applicable penalty unless, at the time of the contravention, the Motor Vehicle was in the possession of another person without the owner's consent.

## **12.0 Vehicle Towing**

- (1) In addition to any other penalties provided for in this By-law, Police Officer or a Municipal Law Enforcement Officer may, where a Motor Vehicle is Parked, or Standing, or Stopped in contravention of this By-Law, or whether such Motor Vehicle impedes the operations of the Town or its contractor, or authorized agents engaged in work upon a Highway, cause that Motor Vehicle to be removed, taken away and stored in a suitable place.
- (2) The costs and charges incurred for removing, taking away and storing a Motor Vehicle pursuant to Section (1) of this Part, shall be a lien upon the Motor Vehicle, which lien may be enforced in the manner prescribed by Section 4 of The Repair and Storage Liens Act, R.S.O. 1990, Chapter R.25, as amended.

## **13.0 Severability**

- (1) Where a court of competent jurisdiction declares any section of this By-law to be invalid, or to be not in force, or without effect, it is the intention of Council in enacting this By-law that the remainder of this By-Law shall continue in force and be applied and enforced in accordance with its terms to the fullest extent possible according to law.

## **14.0 By-laws Repealed**

- (1) By Laws 2003-11 and 2007-12 and all amending By-laws thereto are hereby repealed upon the coming into force of this By-law.

## **15.0 Coming into Force**

- (1) This By-law shall come into force on the day it is passed.

Enacted and passed this \_\_\_\_ day of \_\_\_\_\_, 2022

---

Alar Soever, Mayor

---

Corrina Giles, Town Clerk

**SCHEDULE 1 – RESTRICTED PARKING AREAS****By-law Number 2022-**

<b>Highway Name</b>	<b>Designated Area</b>	<b>Prohibited Times of Use</b>	<b>Type of Restriction</b>
2nd Line	Both sides south of Grey Road 19	Anytime	No Parking
3rd Line	Both sides south of Grey Road 19	Anytime	No Parking
3rd Line	West side 650m north of 6th Sideroad	Anytime	No Parking
3rd Line	West side – full length from Grey Road 119 to 12th Sideroad	Anytime	No Parking
4th Line	Both sides from 21st Sideroad to Osprey – the Blue Mountains Townline	Anytime	No Parking
6th Sideroad	Both sides from 3 <sup>rd</sup> line west to 6 <sup>th</sup> Line.	Anytime	No Parking
6th Sideroad	Both sides from TBM/Euphrasia Townline to 10th Line	Anytime	No Parking
6th Sideroad	North side – Between 3rd Line and Collingwood/Clearview Townline	Anytime	No Parking
9 <sup>th</sup> Sideroad	Both sides from Blue Mountains Euphrasia Townline east to 10 <sup>th</sup> Line	Anytime	No Parking
10th Line	Both sides from 9 <sup>th</sup> Sideroad south to 6 <sup>th</sup> Sideroad	Anytime	No Parking
10th Line	Both sides – Grey Road 13 north to Grey Road 113	Anytime	No Parking
12 <sup>th</sup> Sideroad	North Side – from Grey Rd 19 to a point 275m West	Anytime	No Parking
12th Sideroad	Both sides – from a point 275m west of Grey Road 19 to 4th line	Anytime	No Parking
15th Sideroad A	Both sides	Anytime	No Parking

Highway Name	Designated Area	Prohibited Times of Use	Type of Restriction
18th Sideroad	Both sides between 5 <sup>th</sup> to 6 <sup>th</sup> line	Anytime	No Parking
21st Sideroad	North side – Grey Road 2 east to 5th Line	Anytime	No Parking
21st Sideroad	South side – Grey Road 2 to 4th Line	Anytime	No Parking
Bay Street East	Both sides from Mcauley Street North to Elgin Street	Anytime	No Parking
Bay Street West	North Side – full length	Anytime	No Parking
Bayview Avenue	South side – full length	Anytime	No Parking
Birchview Trail	Both sides - full length	Anytime	No Parking
Blue Mountain Drive	Both sides – full length	Anytime	No Parking
Brooker Boulevard	Both sides - full length	Anytime	No Parking
Brophy's Lane	Both sides – full length	Anytime	No Parking
Bruce Street North	Both sides between Arthur Street/Bridge Street East and Huron Street	9am to 6pm	Time Limit - 2 Hours
Cameron Street	South side from 10th Line to Peel Street	Anytime	No Parking
Campbell Crescent	Even numbered side - full length	Anytime	No Parking
Camperdown Road	Both sides	Anytime	No Parking from Highway 26 to Georgian Bay
Carmichael Crescent	Both sides – full length	Anytime	No Parking
Christie Beach Road	East Side - 400 meters south from north terminus of road	Anytime	No Parking
Cottage Avenue	North Side from Mill Street to Bay Street East Both sides from Mill St. to Poplar St.	Anytime	No Parking
Craigleith Road	Both sides - full length	Anytime	No Parking
Craigmore Crescent	Both sides - full length	Anytime	No Parking
Dawson Lane	East Side – full length	Anytime	No Parking
Delphi Lane	Both sides – full length	Anytime	No Parking
Deviation Road in the 11th Concession	Both sides from the southernmost limits of Lot 9 north and east to the 10 <sup>th</sup> Concession	Anytime	No Parking
Drake's Path	Both sides - full length	Anytime	No Parking
Eastern half of the Deviation Road in the 11th Concession	Both sides from the north side of the 6th and 7th Road Allowance to the northernmost limits of	Anytime	No Parking



Highway Name	Designated Area	Prohibited Times of Use	Type of Restriction
	Lot 8		
Elgin Street North	Both sides – full length from Bay St. to Georgian Bay	Anytime	No Parking
Fairway Court	Both sides - full length	Anytime	No Parking
Farm Gate Drive	Both sides - full length	Anytime	No Parking
Fraser Crescent	Both sides – full length	Anytime	No Parking
Gord Canning Drive (formerly Mountain Drive)	Both sides – full length	Anytime	No Parking
Happy Valley Road	Both sides - full length	Anytime	No Parking
Harbour Street	South side between Bruce Street North and Elma Street North	Anytime	No Parking
Helen Street	Both sides - full length	Anytime	No Parking
Heritage Drive	Both sides - full length	Anytime	No Parking
Hester Street	East side from Bridge Street to a point 26 metres south thereof	Anytime	No Parking
Hoover Lane	Both sides - full length		No Parking
Jozo Weider Boulevard	Both sides - full length	Anytime	No Parking
Kandahar Lane	Both sides - full length	Anytime	No Parking
Kelly’s Way	Both sides - full length	Anytime	No Parking
Lake Drive	Both sides – full length	Anytime	No Parking
Lakeshore Drive	Both sides from Lansdowne Street North to Elma Street North	Anytime	No Parking
Lakeshore Road East	South side- full length	Anytime	No Parking
Lakeshore Road West	South side– full length	Anytime	No Parking
Lakewood Drive	Both sides – full length	Anytime	No Parking
Lansdowne Street North	East side– full length	Anytime	No Parking
Laurie’s Court	Both sides - full length	Anytime	No Parking
Liisa’s Lane	Both sides - full length	Anytime	No Parking
Lions Park Lane	Both sides - full length	9am to 6pm	Time Limit - 2 hours
Long Point Road	West side from Tyrolean Beach to Georgian Bay	Anytime	No Parking
Lora Bay Drive	Both sides from Sunset Boulevard to Westridge Dr. roundabout	Anytime	No Parking
Louisa Street East	Both sides between Hester Street and Bruce Street South	9am and 6pm	Time Limit - 2 Hours
Louisa Street West	Both sides from Bruce Street South to a point 75 metres west thereof	9am and 6pm	Time Limit - 2 Hours

Highway Name	Designated Area	Prohibited Times of Use	Type of Restriction
Lucille Wheeler Crescent	Both sides – full length	Anytime	No Parking
Lucille Wheeler Crescent	Both sides – full length	Anytime	No Parking
Maple Lane	East Side– full length	Anytime	No Parking
McAuley Street North	Both sides - full length	9am to 6pm	Time Limit - 2 hours
Mill Street	East side– full length	Anytime	No Parking
Mission Rd.	North Side – Full Length	Anytime	No Parking
Northmount Crescent	Both sides – full length	Anytime	No Parking
Old Lakeshore Road	North side – full length	Anytime	No Parking
Peel Street	Both sides from Cameron Street to Highway 26	Anytime	No Parking
Petun Drive	Southernmost and westernmost sides along the entire length thereof	Anytime	No Parking
Pioneer Lane	Both sides - full length	Anytime	No Parking
Plater Street	Both sides - full length	Anytime	No Parking
Poplar Sideroad	South Side– full length	Anytime	No Parking
Poplar Street	North side between Cottage Avenue and the Beaver River	Anytime	No Parking
Pretty River Road	Both sides from Osprey-Blue Mountains Townline to Blue Mountains Clearview Townline, except as signed.	Anytime	No Parking
Railway Street	South Side– full length	Anytime	No Parking
Road Allowance between Lots 21 & 22	Both sides west from the westernmost boundary of the road allowance between Concession 5 and 6 to a point 30 metres distant	Anytime	No Parking
Road Allowance between Lots 21 & 22	Southernmost side - road allowance between Lots 21 & 22 and Deviation Road extending therefrom in Concession 5 east from the westernmost boundary of the road allowance between Concessions 5 & 6 to a point 200 metres distant	Anytime	No Parking
Road Allowance	Both sides north from	Anytime	

Highway Name	Designated Area	Prohibited Times of Use	Type of Restriction
between Lots 5 & 6	the northernmost boundary of the road allowance between Lots 21 & 22 through the whole of Lots 22 & 23		No Parking
Scandia Lane	Both sides – full length	Anytime	No Parking
Slabtown Road	Both sides - full length, except where signed.	Anytime	No Parking
Sleepy Hollow Road	Both sides - 500 meters west of Grey Rd. 19	Anytime	No Parking
Sunset Boulevard	Both sides - Christie Beach Sideroad to Lora Bay Drive	9am to 6pm	No Parking
Swiss Meadows Boulevard	Both sides - full length	Anytime	No Parking
Teskey Drive	North side east from Camperdown Road along the entire length thereof	Anytime	No Parking
Tyrolean Lane	Both sides - full length	Anytime	No Parking
Victoria Street South	West side between Louisa Street West and Alice Street West	Anytime	No Parking
Wards Road	Both sides - Highway 26 to water	Anytime	No Parking
Wensley Drive	Both sides from the intersection of Peaks Rd. 150 meters west and 300 meters east.	Anytime	No Parking
Wintergreen Place	Both sides - full length	Anytime	No Parking
Woodland Park Road	North side- full length	Anytime	No Parking
Wyandot Court	Southernmost and westernmost sides along the entire length thereof	Anytime	No Parking

**SCHEDULE 2 – PAID PARKING AREAS**

**BY-LAW NUMBER 2022-**\_\_\_\_\_

<b>Paid Parking Area</b>	<b>Enforced Time Period</b>	<b>Maximum Duration</b>
15-17 Arthur Street	8 am to 9 pm	4 hours
171 King Street	8 am to 9 pm	4 hours
Bayview Park	6 am to 10 pm	4 hours
Council Beach	6 am to 10 pm	4 hours
Delphi Point	6 am to 10 pm	4 hours
Heathcote Park	6 am to 10 pm	4 hours
Little River Park	6 am to 10 pm	4 hours
Lora Bay Park	6 am to 10 pm	4 hours
Loree	8 am to 9 pm	4 hours
Northwinds Beach	6 am to 10 pm	4 hours
Peasemarsch Nature Reserve	6 am to 10 pm	4 hours
Thornbury Harbour	6 am to 10 pm	4 hours
Tomahawk Recreation Complex (winter only)	6 am to 10 pm	4 hours
Town Hall	8am to 9pm – Weekends and Holidays only	4 hours

**SCHEDULE 3 OFFENCES AND CORRESPONDING ADMINISTRATIVE MONETARY PENALTY****BY-LAW NUMBER 2022-**

<b>Section</b>	<b>Description</b>	<b>Penalty – If paid within 15 days of Penalty Notice</b>	<b>Penalty – If paid beyond 15 days of Penalty Notice</b>
5.0(1)(a)	Park on highway, left wheels to curb	\$50	\$75
5.0(1)(b)	Park more than 0.15 metres from curb	\$50	\$75
5.0(3)	Park other than at 45-degree angle to curb	\$50	\$75
5.0(4)	Park on or outside of designated angle-parking space	\$50	\$75
5.0(6)(a)	Stop so as to obstruct footpath or crosswalk	\$75	\$100
5.0(6)(b)	Stop on highway within an intersection	\$50	\$75
5.0(6)(c)	Stop so as to obstruct pedestrian crossover	\$50	\$75
5.0(6)(d)	Stop within 9 metres of pedestrian crossover	\$50	\$75
5.0(6)(e)	Stop alongside excavation/obstruction to impede	\$50	\$75
5.0(6)(f)	Stop on a highway beside stopped or parked vehicle	\$50	\$75
5.0(6)(g)	Stop on a bridge or tunnel/underpass	\$50	\$75
5.0(6)(h)	Stop on a centre strip	\$50	\$75
5.0(6)(i)	Stop on boulevard	\$50	\$75
5.0(6)(j)	Stop on a dedicated cycling facility	\$75	\$100
5.0(6)(k)	Stop in a School Bus Loading Zone	\$100	\$125
5.0(7)	Park so as to obstruct sidewalk	\$75	\$100
5.0(8)	Park within 3 metres of fire hydrant	\$300	\$325
5.0(9)(a)	Park overnight between November and April	\$75	\$100
5.0(9)(b)	Park in front of or within 0.6 metres of a private roadway	\$50	\$75
5.0(9)(c)	Park on highway, within 9 metres of intersection	\$50	\$75
5.0(9)(d)	Park within 15m of level railway crossing	\$50	\$75
5.0(9)(e)	Park on a street that is less than 6 metres	\$50	\$75
5.0(9)(f)	Park on a highway within 6 metres of a hotel, theatre or public hall entrance	\$50	\$75

<b>Section</b>	<b>Description</b>	<b>Penalty – If paid within 15 days of Penalty Notice</b>	<b>Penalty – If paid beyond 15 days of Penalty Notice</b>
5.0(9)(g)	Park in a position preventing another parked vehicle leaving	\$50	\$75
5.0(9)(h)	Park on a highway to wash, grease, or repair	\$50	\$75
5.0(9)(i)	Park for the purpose of displaying vehicle for sale	\$50	\$75
5.0(9)(j)	Park interfere with snow clearing	\$75	\$100
5.0(9)(k)	Park interfere with movement of traffic	\$50	\$75
5.0(9)(l)	Park opposite a vehicle where the roadway is less than 9 metres	\$50	\$75
5.0(9)(m)	Park on highway, within 6 metres of a bus stop	\$50	\$75
5.0(9)(n)	Park within 150 metres of an engaged firefighting apparatus	\$300	\$325
5.0(9)(o)	Park within 7 metres of fire hall driveway, same side of street or within 30 metres of fire hall driveway, opposite side of street	\$150	\$175
5.0(9)(p)	Park on boulevard	\$50	\$75
5.0(9)(q)	Park on a dedicated cycling facility	\$75	\$100
5.0(9)(r)	Obstruct waterfront fire lane/access	\$150	\$175
5.0(9)(s)	Park in cul-de-sac to interfere with Fire apparatus	\$150	\$175
5.0(9)(t)	Park in a secondary emergency access	\$150	\$175
5.0(11)(a)	Park on highway, within 30 metres of intersection	\$50	\$75
5.0(11)(b)	Park on highway, within 25 metres of a bus stop	\$50	\$75
5.0(11)(c)	Park on side of highway contiguous to school property between 8:00 a.m. and 6:00 p.m.	\$50	\$75
5.0(11)(d)	Park in an area designated “Police Vehicles Only”	\$75	\$100
5.0(11)(e)	Park in an area designated taxicab stand	\$50	\$75
5.0(11)(f)	Park in an area designated “Emergency No Parking”	\$150	\$175
5.0(11)(g)	Park within 15 metres of a crosswalk	\$50	\$75
5.0(11)(h)	Park on the inside or outside curve of an angle bend	\$50	\$75
5.0(11)(i)	Park on a designated fire route	\$50	\$75
5.0(12)	Stop within 15 metres of a signed school crossing	\$50	\$75
5.0(14)	Park a commercial vehicle on a residential lot	\$50	\$75

<b>Section</b>	<b>Description</b>	<b>Penalty – If paid within 15 days of Penalty Notice</b>	<b>Penalty – If paid beyond 15 days of Penalty Notice</b>
6.0(1)	Park on a highway where prohibited	\$50	\$75
6.0(1)	Stop on a highway where prohibited	\$50	\$75
6.0(1)	Stand on a highway where prohibited	\$50	\$75
7.0(1)	Park on private/municipal property without consent	\$50	\$75
8.0(2)	Park in a designated accessible space	\$300	\$325
8.0(2.1)	Fail to properly display an accessible parking permit	\$50	\$75
9.0(1)	Park without paying required fee or exceed parking duration	\$80	\$105
10.0(3)	Hinder or obstruct	\$100	\$125

**SCHEDULE 'A'**

**FORM OF SIGN**

**SIGN REQUIRED TO BE PREDOMINATELY DISPLAYED AT EACH ENTRANCE TO THE LAND PURSUANT TO SECTION 100(B) OF THE MUNICIPAL ACT, 2001**

**MINIMUM SIGN OF SIZE: 30 CM X 45 CM**

**MINIMUM LETTERING HEIGHT: "PARKING BY PERMIT ONLY" – 3 CM  
ALL OTHER LETTERING – 1 CM**

**SIGN CONSTRUCTION: GALVANIZED STEEL WITH A  
REFLECTIVE BACKGROUND C/W A SOLID  
BLACK BORDER**

**TOWN OF THE BLUE MOUNTAINS BY-LAW NO. 2007- XX TO BE INCORPORATED  
ON SIGN**

**TOWN OF THE BLUE MOUNTAINS LOGO NOT TO APPEAR ON THE SIGN**

**OWNER'S LOGO AND/OR NAME  
OR  
PROPERTY NAME**

**PARKING BY  
PERMIT ONLY**

**VEHICLES LEFT PARKED OR STANDING  
WITHOUT THE PROPERTY OWNER'S  
CONSENT WILL BE TAGGED AND/OR  
TOWED AWAY AND IMPOUNDED  
AT THE VEHICLE OWNER'S SOLE  
EXPENSE AND RISK**

**TOWN OF THE BLUE MOUNTAINS BY-LAW NO. 2007-XX**

**OWNER'S NAME  
&  
MAILING ADDRESS**



## SCHEDULE " B"

The following sign(s) is required to be predominately displayed at each entrance on the following lands, pursuant to Section 101(3) of the *Municipal Act, 2001*:

1. Blue Mountain Resorts LP Parking Lot "P2" located at 218 Jozo Weider Blvd.

MINIMUM SIGN OF SIZE:	122cm (48") X 213.4cm (84") Main Entrances
	30.5cm (12") X 45.7cm (18") Incidental Locations
MINIMUM LETTERING HEIGHT:	"DAY PARKING ONLY": 3cm
	"Overnight Parking...": 2cm
	ALL OTHER LETTERING: 1 cm
SIGN CONSTRUCTION:	Galvanized steel with a blue reflective background



### SCHEDULE "C"

The following sign(s) is required to be predominately displayed at each entrance on the following lands, pursuant to Section 101(3) of the *Municipal Act, 2001*:

- The Grand Georgian (GSCC #46) underground parking facility located at 156 Jozo Weider Blvd.

MINIMUM SIGN OF SIZE: 30.5cm (12") X 45.7cm (18") Main Entrances  
16.5cm (6.5") X 25.4cm (10") Incidental Locations

MINIMUM LETTERING HEIGHT: "PARKING BY PERMIT ONLY": 27cm (10.6")  
"Vehicles left parked...": 1.27cm (0.5")

SIGN CONSTRUCTION: Galvanized steel with a blue reflective background

# PARKING BY PERMIT ONLY

Vehicles left parked or standing without valid permit properly displayed in vehicle windshield will be ticketed and/or towed away and impounded at the vehicle owner's sole expense and risk.

Grand Georgian – GSCC 46  
156 Jozo Weider Blvd, Blue Mountains, ON L9Y 3Z2

TOWN OF THE BLUE MOUNTAINS  
BY-LAW NO. 2007-12

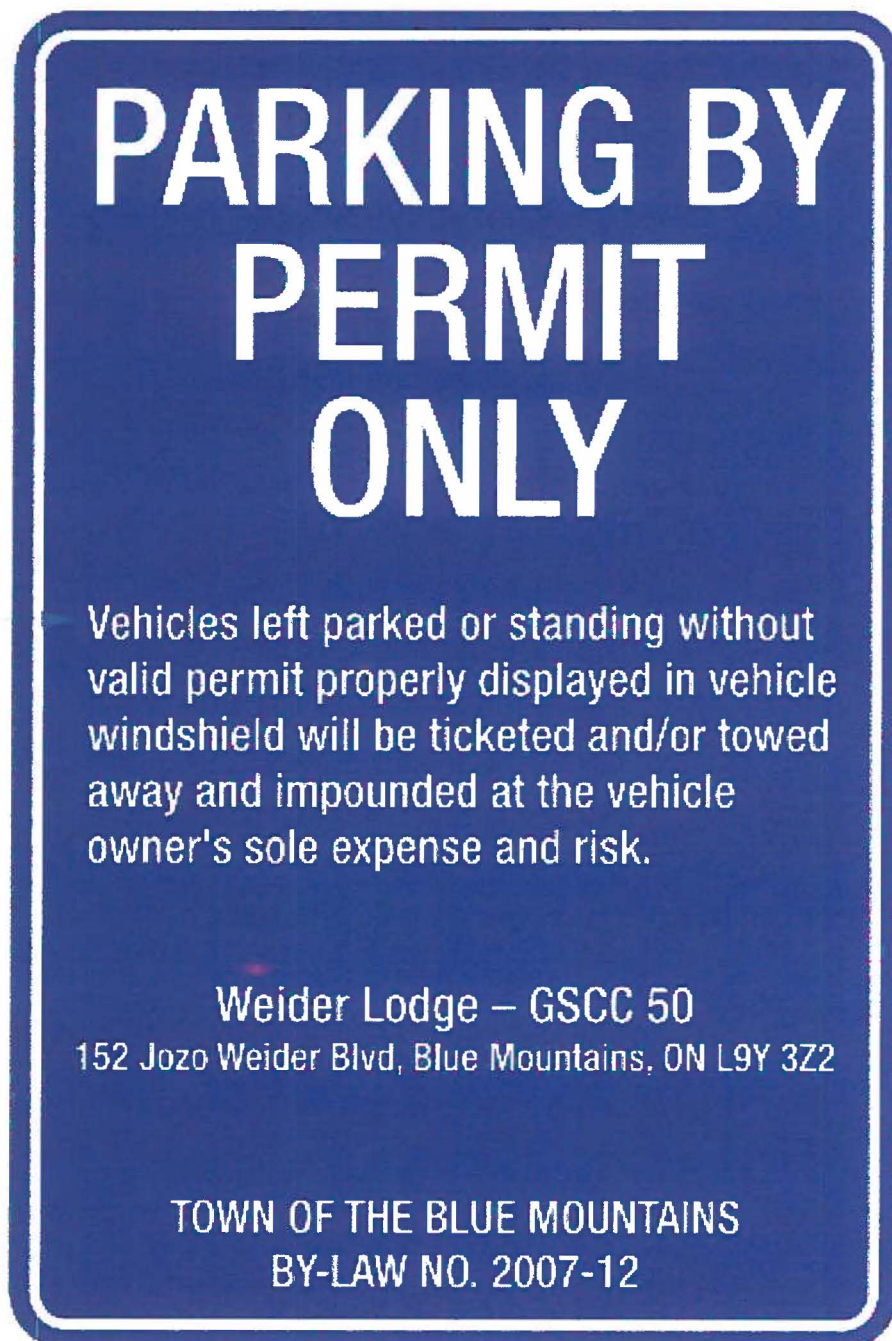


## SCHEDULE "D"

The following sign(s) is required to be predominately displayed at each entrance on the following lands, pursuant to Section 101(3) of the *Municipal Act, 2001*:

- The Weider Lodge (GSCC #50) underground parking facility located at 220 Gordon Canning Dr.

MINIMUM SIGN OF SIZE:	30.5cm (12") X 45.7cm (18") Main Entrances
	16.5cm (6.5") X 25.4cm (10") Incidental Locations
MINIMUM LETTERING HEIGHT:	"PARKING BY PERMIT ONLY": 27cm (10.6")
	"Vehicles left parked...": 1.27cm (0.5")
SIGN CONSTRUCTION:	Galvanized steel with a blue reflective background

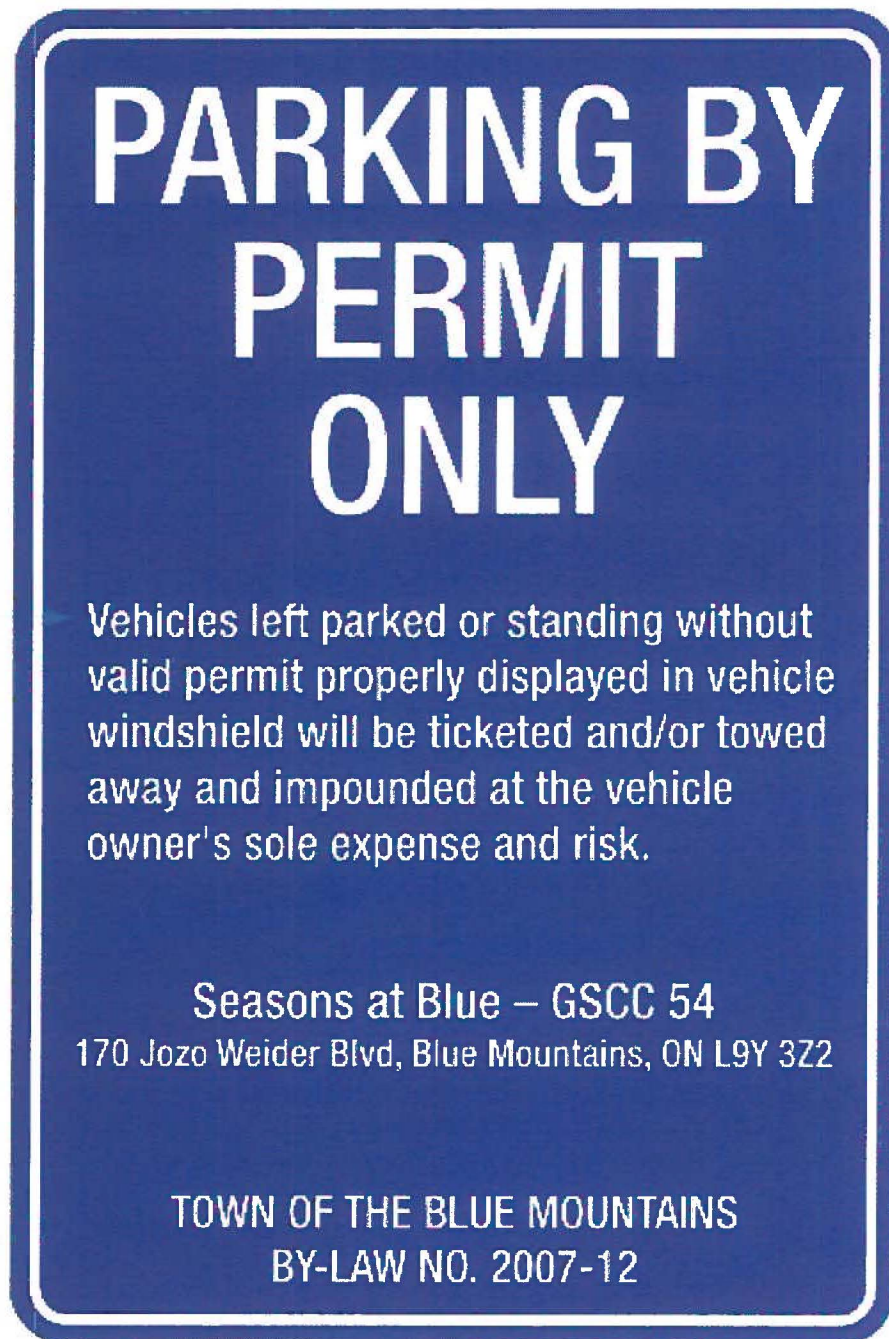


## SCHEDULE "E"

The following sign(s) is required to be predominately displayed at each entrance on the following lands, pursuant to Section 101(3) of the *Municipal Act, 2001*:

1. The Season's at Blue (GSCC #54) parking facility located at 170 Jozo Weider Blvd.

MINIMUM SIGN OF SIZE:	30.5cm (12") X 45.7cm (18") Main Entrances
	16.5cm (6.5") X 25.4cm (10") Incidental Locations
MINIMUM LETTERING HEIGHT:	"PARKING BY PERMIT ONLY": 27cm (10.6")
	"Vehicles left parked...": 1.27cm (0.5")
SIGN CONSTRUCTION:	Galvanized steel with a blue reflective background

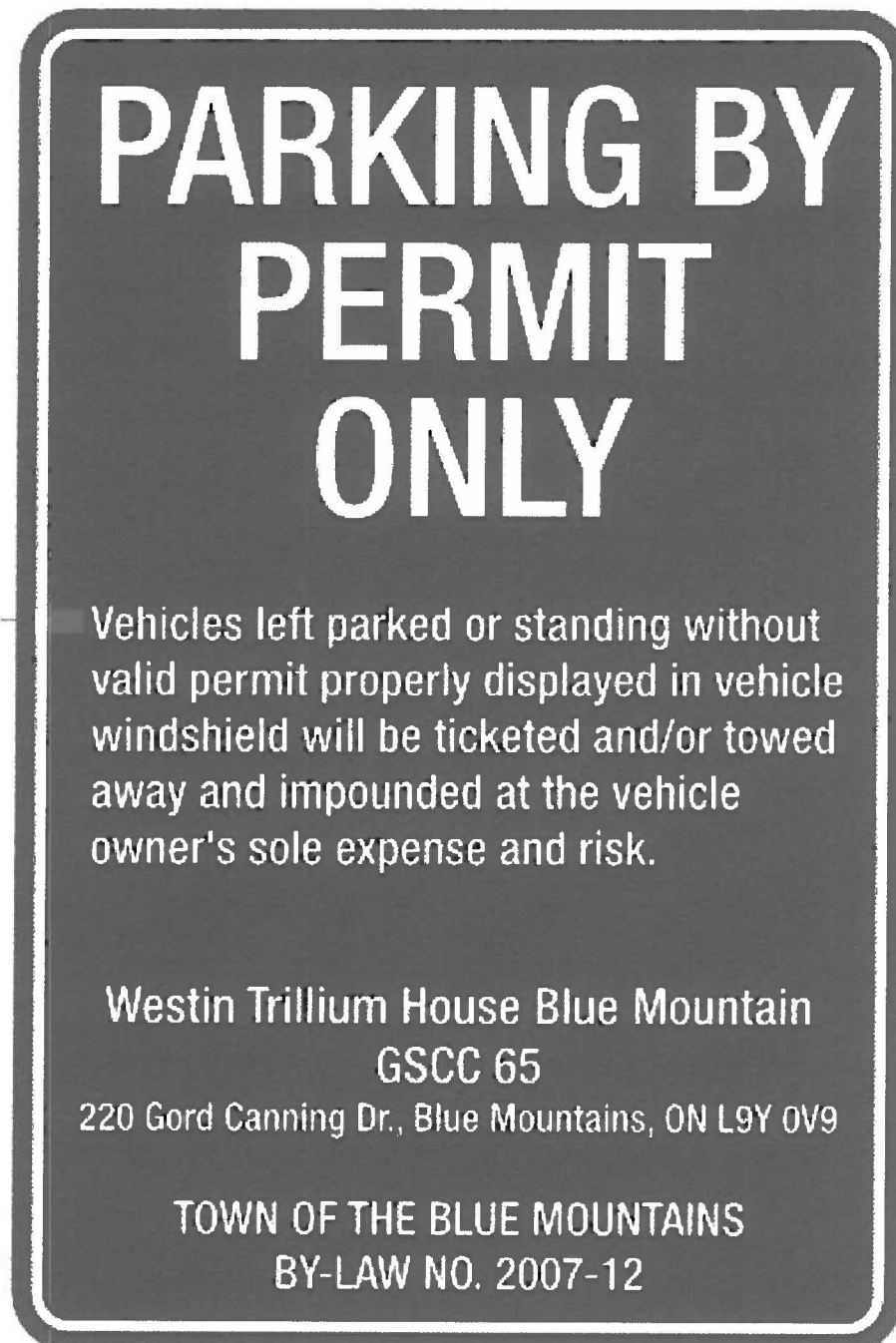


## SCHEDULE "F"

The following sign(s) is required to be predominately displayed at each entrance on the following lands, pursuant to Section 101(3) of the *Municipal Act, 2001*:

1. The Westin Trillium House Blue Mountain (GSCC #65) underground parking facility located 220 Gord Canning Dr.

MINIMUM SIGN OF SIZE:	30.5cm (12") X 45.7cm (18") Main Entrances
	16.5cm (6.5") X 25.4cm (10") Incidental Locations
MINIMUM LETTERING HEIGHT:	"PARKING BY PERMIT ONLY": 27cm (10.6")
	"Vehicles left parked...": 1.27cm (0.5")
SIGN CONSTRUCTION:	Galvanized steel with a grey reflective background





## SCHEDULE "G"

The following sign(s) is required to be predominately displayed at each entrance on the following lands, pursuant to Section 101(3) of the *Municipal Act, 2001*:

1. Mosaic at Blue (GSCC #75) underground parking facility located at 190 Jozo Weider Blvd.

MINIMUM SIGN OF SIZE:	30.5cm (12") X 45.7cm (18") Main Entrances
	16.5cm (6.5") X 25.4cm (10") Incidental Locations
MINIMUM LETTERING HEIGHT:	"PARKING BY PERMIT ONLY": 27cm (10.6")
	"Vehicles left parked...": 1.27cm (0.5")
SIGN CONSTRUCTION:	Galvanized steel with a blue reflective background





12"x18" Village Cres.



12"x18" SBL

Please thoroughly check artwork for accuracy, spelling, size, quantity, material etc. Sign and return by e-mail or fax.  
Original artwork shown here is the property of Park Sign and must not be used, altered or reproduced without written permission from Park Sign.



**PARK SIGN**  
DIGITAL IMAGING  
1986 • 30 YEARS • 2016

Visit  
**[www.ParkSign.com](http://www.ParkSign.com)**  
to Browse Thousands  
of Promotional Products



24 Stewart Road, Collingwood, ON L9Y 4K1  
Voice: (705) 444-1723, Fax: (705) 444-1722  
e-mail: [bwhite@parksign.com](mailto:bwhite@parksign.com)  
Website: [www.parksign.com](http://www.parksign.com)

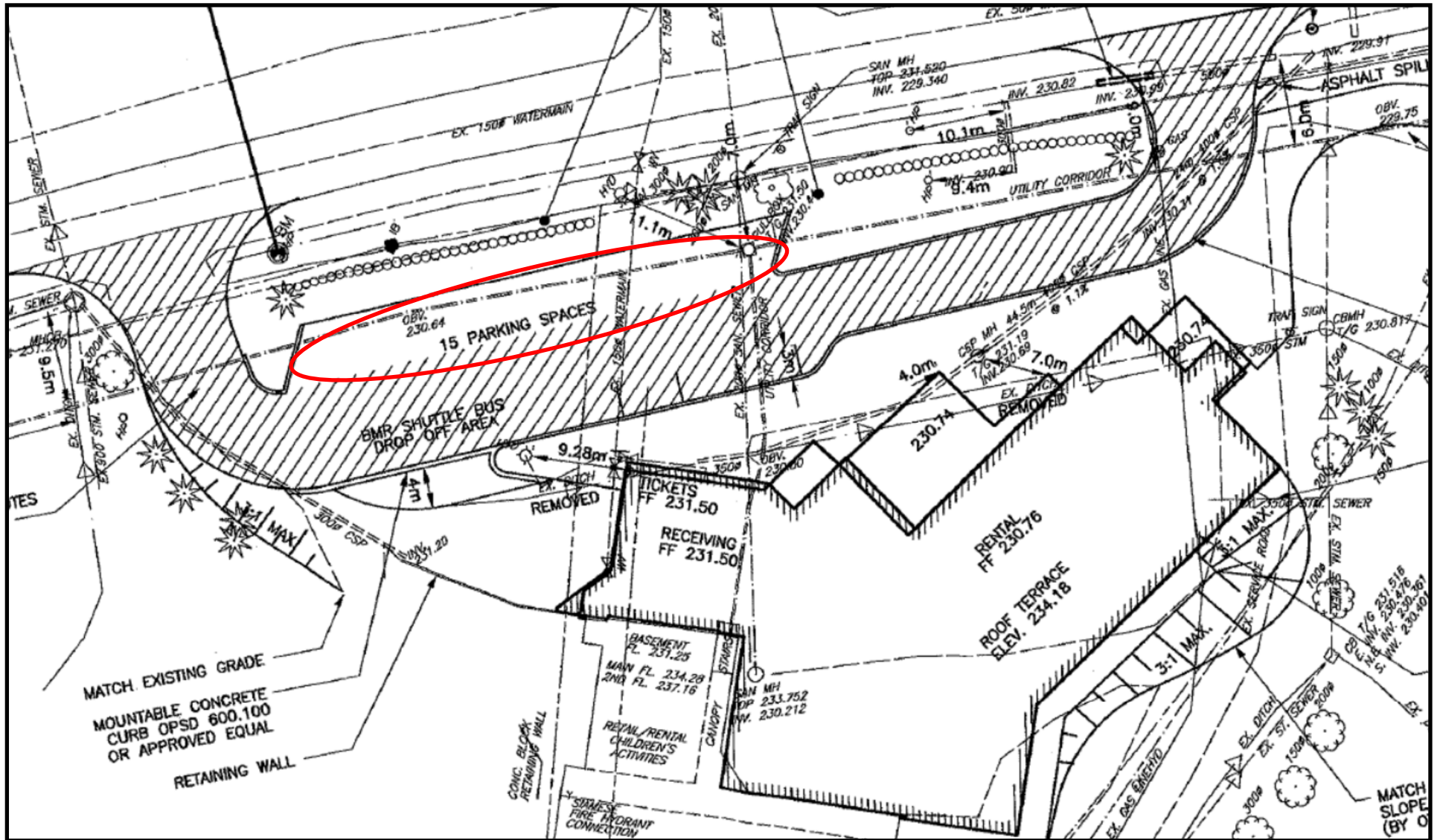


## Schedule I

Authorized signs as shown in Schedule "H" shall be posted for each parking spot in the area shown below

### South Base Lodge Short-Term Parking Spaces - Proposed TBM By-law Enforcement Area

(Will not pertain to 2 x Accessible Parking Spaces & 1 x 'By Permit Only' Parking Space)

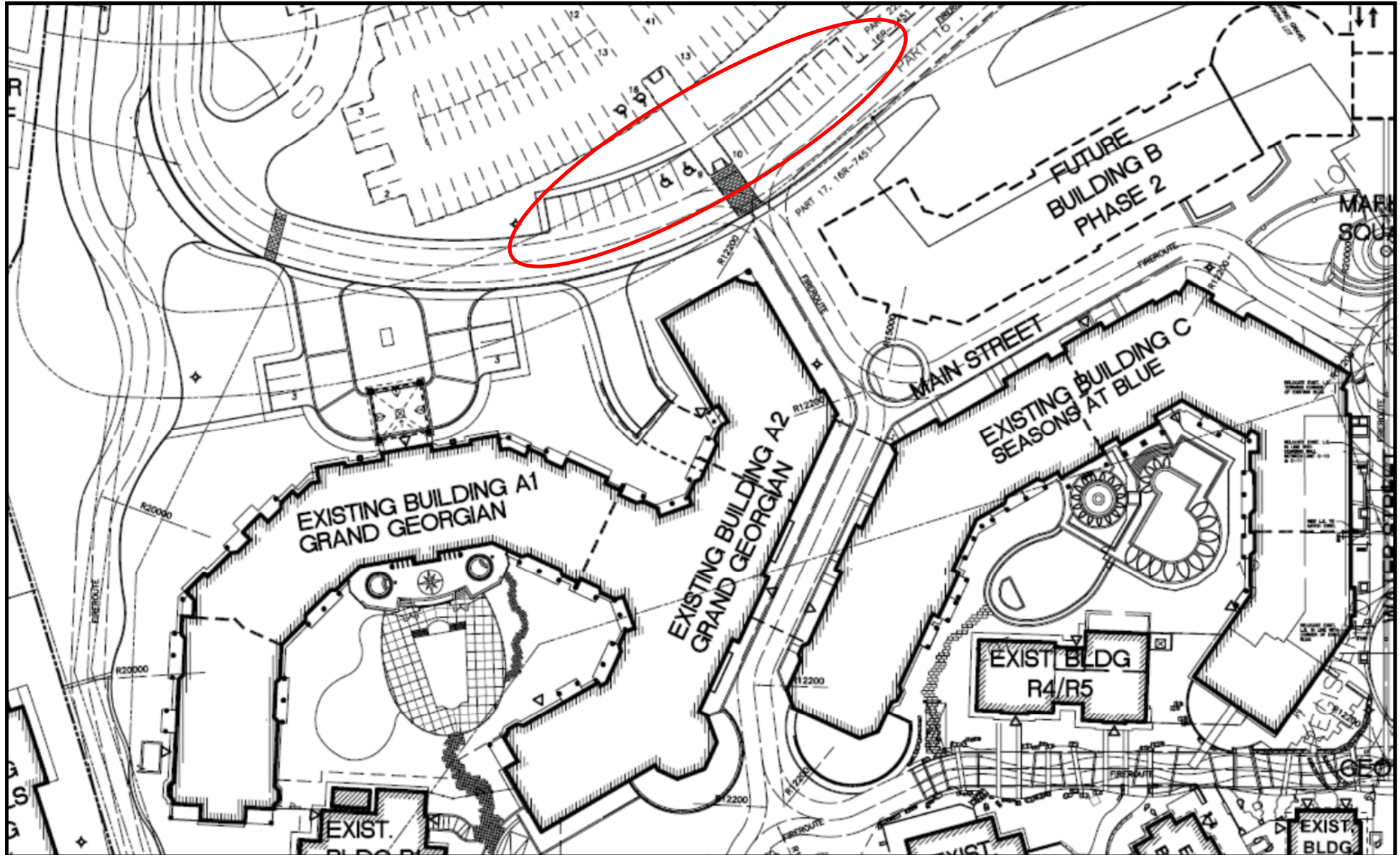




### Village Short-Term Parking Spaces - Proposed TBM By-law Enforcement Area

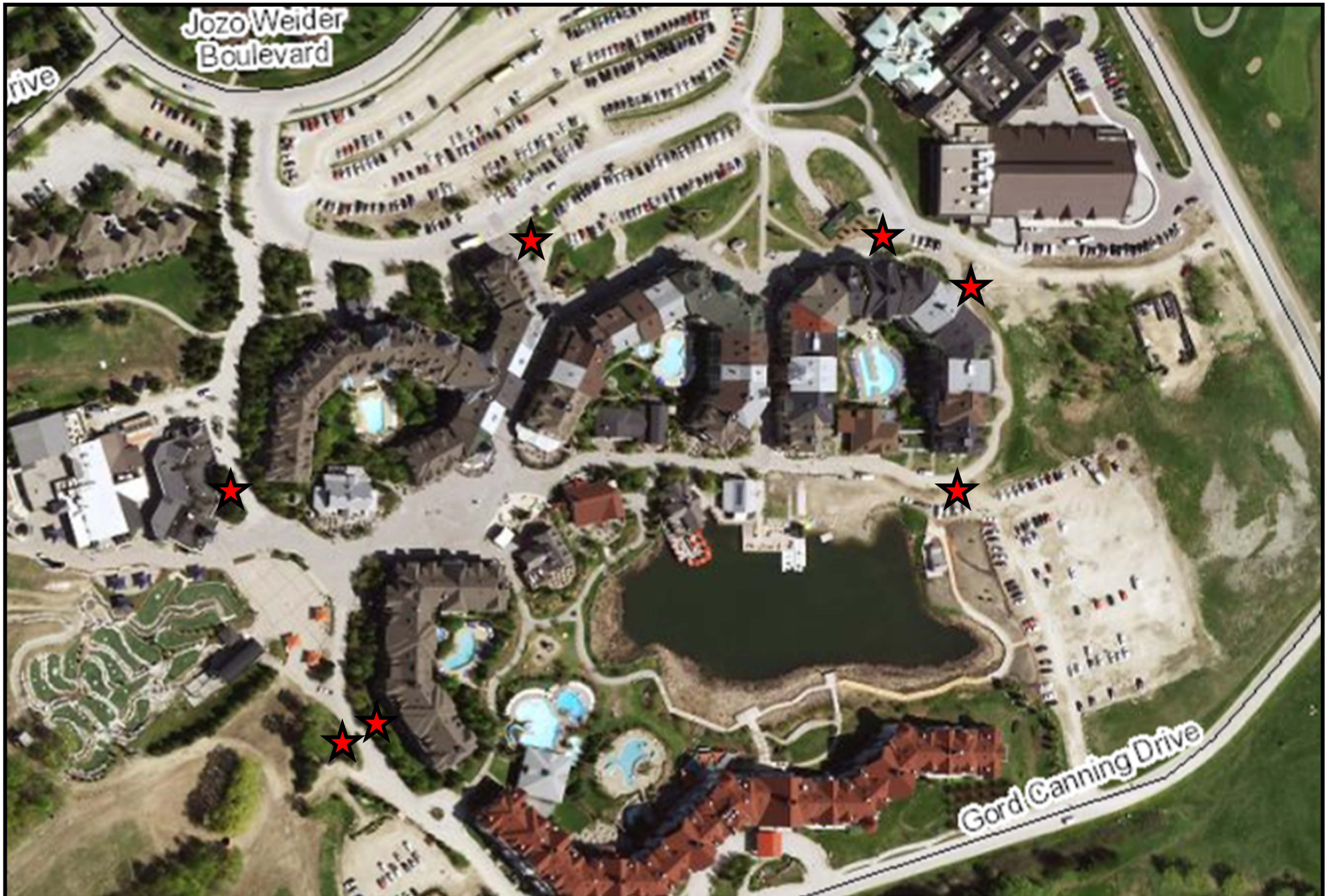
(Will not pertain to 2 x Accessible Parking Spaces)

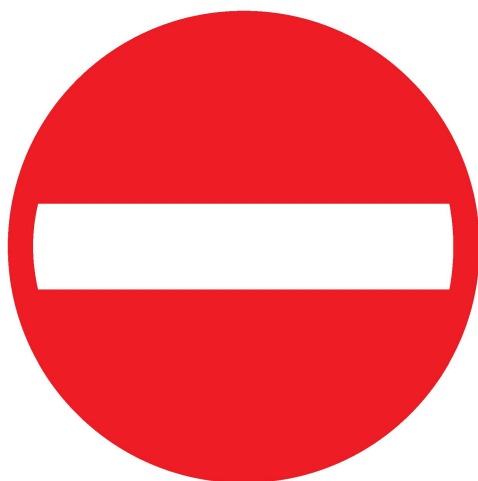
Authorized signs as shown in Schedule "H" shall be posted for each parking spot in the area shown below





Proposed Do Not Enter/No Parking Signs at Vehicle Access Points to Blue Mountain Village





# **NO VEHICLE ENTRY NO PARKING**

**BY-LAW #2007-12**

**Vehicles will be tagged and/or towed and  
impounded at the owner's sole expense and risk.**

**DELIVERIES ALLOWED  
MON. - SAT. 8 AM-11 AM**

**Permit required outside of delivery hours.  
See Grand Georgian front desk.**

24"x30"

Please thoroughly check artwork for accuracy, spelling, size, quantity, material etc. Sign and return by e-mail or fax.  
Original artwork shown here is the property of Park Sign and must not be used, altered or reproduced without written permission from Park Sign.



**PARK SIGN**  
DIGITAL IMAGING  
1986 • 30 YEARS • 2016

Visit  
**[www.ParkSign.com](http://www.ParkSign.com)**  
to Browse Thousands  
of Promotional Products



24 Stewart Road, Collingwood, ON L9Y 4K1  
Voice: (705) 444-1723, Fax: (705) 444-1722  
e-mail: [bwhite@parksign.com](mailto:bwhite@parksign.com)  
Website: [www.parksign.com](http://www.parksign.com)



**Schedule L**

# **PARKING BY PERMIT ONLY**

Vehicles left parked or standing without valid permit properly displayed in vehicle windshield will be ticketed and/or towed away and impounded at the vehicle owner's sole expense and risk.

Mountain Walk – GCC 29  
169 Jozo Weider Blvd, Blue Mountains, ON L9Y 3Z2

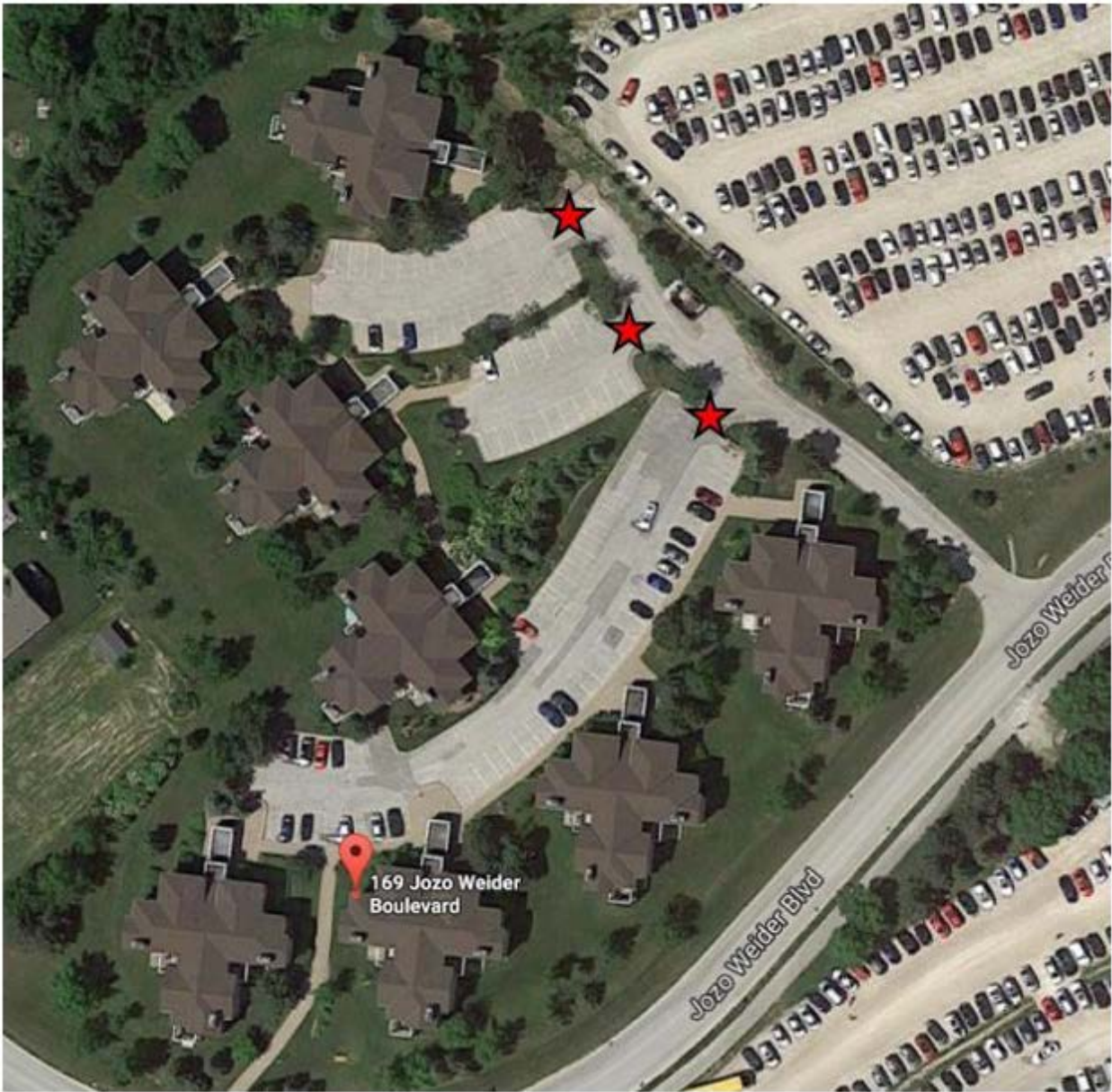
TOWN OF THE BLUE MOUNTAINS  
BY-LAW NO. 2007-12

**Minimum Size 30 X 45cm**



Schedule M

Sign Locations



# Town of The Blue Mountains

## Schedule N

By-law No. 2022-\_\_\_\_\_

# PARKING BY PERMIT ONLY

Vehicles left parked or standing without valid permit properly displayed in vehicle windshield will be ticketed and/or towed away and impounded at the vehicle owner's sole expense and risk.

**Windfall Homeowners' Association**  
140 Crosswinds Blvd., Blue Mountains, ON L9Y 4E2

**TOWN OF THE BLUE MOUNTAINS**  
**BY-LAW NO. 2007-12**



### Artwork Approval

Call: 705 444 6300 Email: sales@signworks.pro Fax: 705 444 6768

Please thoroughly check layout and estimate/invoice for accuracy.

Check quantity requested, spelling, colours, size, material and delivery date.

Please sign and return your approval by email or fax to get your order into production.

*Thank you for your business!*

\_\_\_\_\_  
Authorized Signature

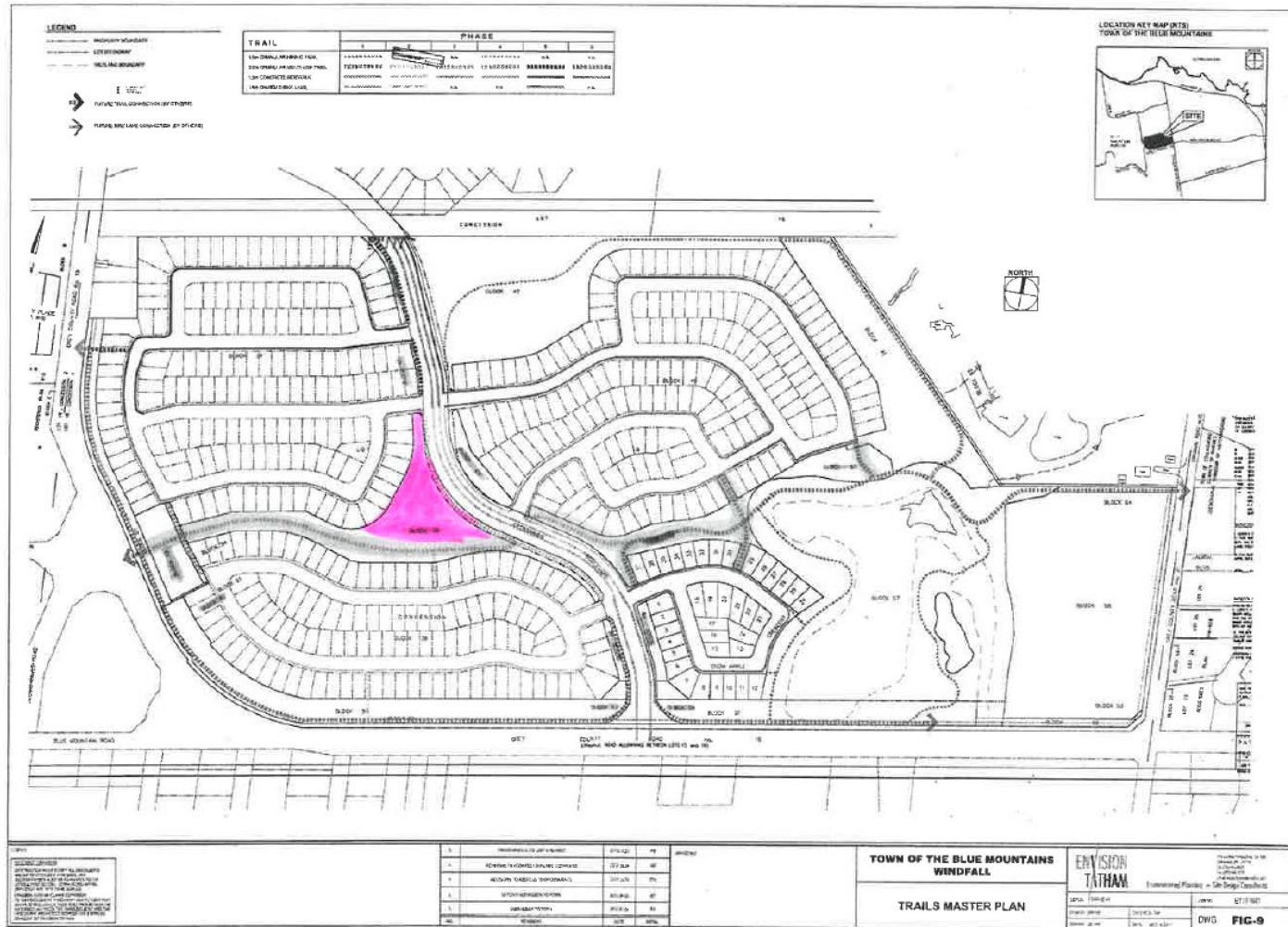
\_\_\_\_\_  
Date

Original artwork shown here is the property of Georgian Bay Signworks and must not be used, altered or reproduced without written permission from Georgian Bay Signworks.

# Town of The Blue Mountains

## Schedule O

By-law No. 2022-\_\_\_\_\_



Parking lot Area

**Town of The Blue Mountains**

**Schedule P**

**By-law No. 2022-\_\_\_\_\_**

**PRIVATE PROPERTY  
Mountain House  
NO PARKING  
EXCEPT BY PERMIT**

**OWNERS MUST  
DISPLAY PARKING PASS,  
ALL VISITORS MUST BE  
REGISTERED.**

**UNAUTHORIZED VEHICLES  
WILL BE TAGGED AND/OR  
TOWED AWAY AT  
OWNER'S EXPENSE**

**BY-LAW 2007-12**



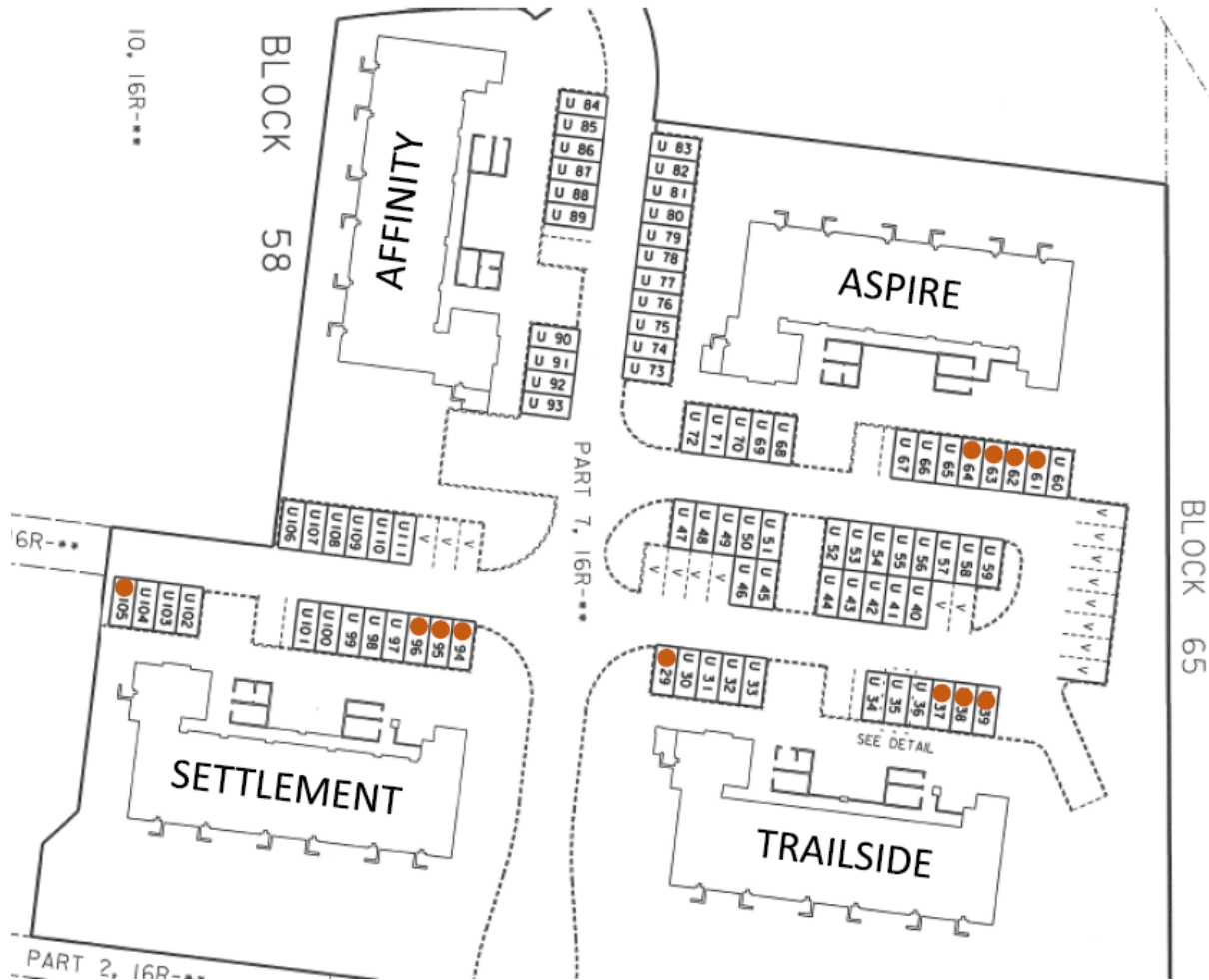
# Town of The Blue Mountains

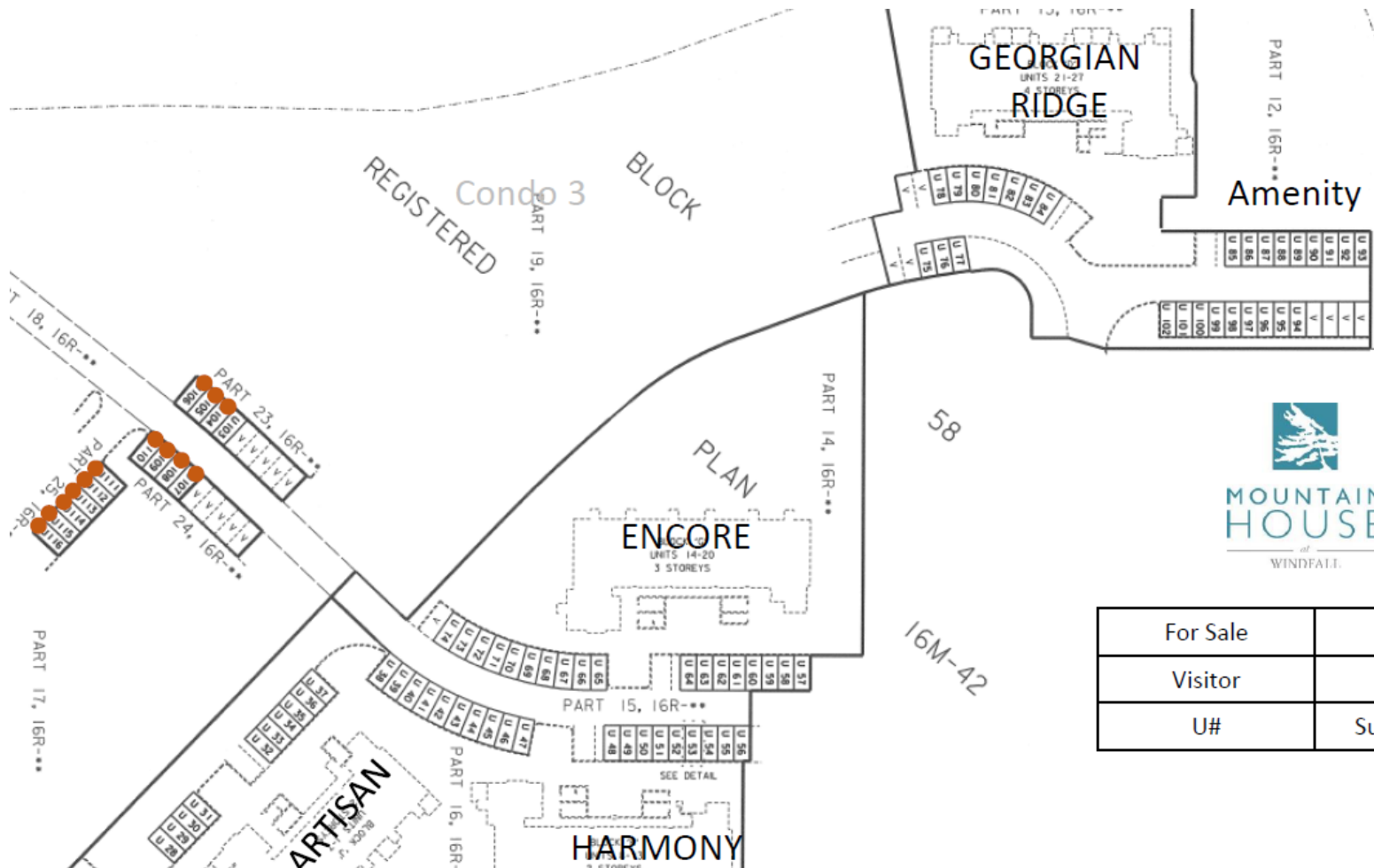
## Schedule Q

By-law No. 2022-\_\_\_\_\_



For Sale	●
Visitor	V
U#	Suite Parking





GSCC 120



For Sale	●
Visitor	V
U#	Suite Parking