

A gravel path winds through a forest with trees showing autumn foliage. The path is made of grey gravel and is flanked by green and yellowing trees. The scene is captured from a low angle, looking down the path. A semi-transparent dark green rectangle is overlaid on the center of the image, containing the text in yellow.

PROTECT THE GEORGIAN TRAIL AND WETLANDS



JULY 2, 2024 AGENDA ITEMS CONNECTED TO THE CAMPUS OF CARE:

1. 2023 YEAR END WATER AND WASTEWATER CAPACITY REPORT
2. BAY STREET EAST RECONSTRUCTION
3. PEEL STREET NORTH RECONSTRUCTION
4. DEVELOPMENT "D" ZONES ZONING BY-LAW AMENDMENT



GEORGIAN TRAIL AND ENVIRONMENTAL CONCERNS


1. Why is it acceptable to use the Georgian Trail to service Lora Greens but not for the forcemain to avoid disrupting homes on Bay Street East?
2. Have alternative servicing routes that avoid impacting the Georgian Trail and wetlands been thoroughly considered?
3. Did the Town enter into a site plan agreement without a servicing plan in place?

IMPACT ON WETLANDS ECOSYSTEM

1. What are the environmental impacts on the Georgian Trail wetlands ecosystem?
2. Can silt fences alone adequately protect the wetlands from erosion and contamination?
3. How will the construction process, including digging and dewatering, affect the water levels and health of the wetlands?



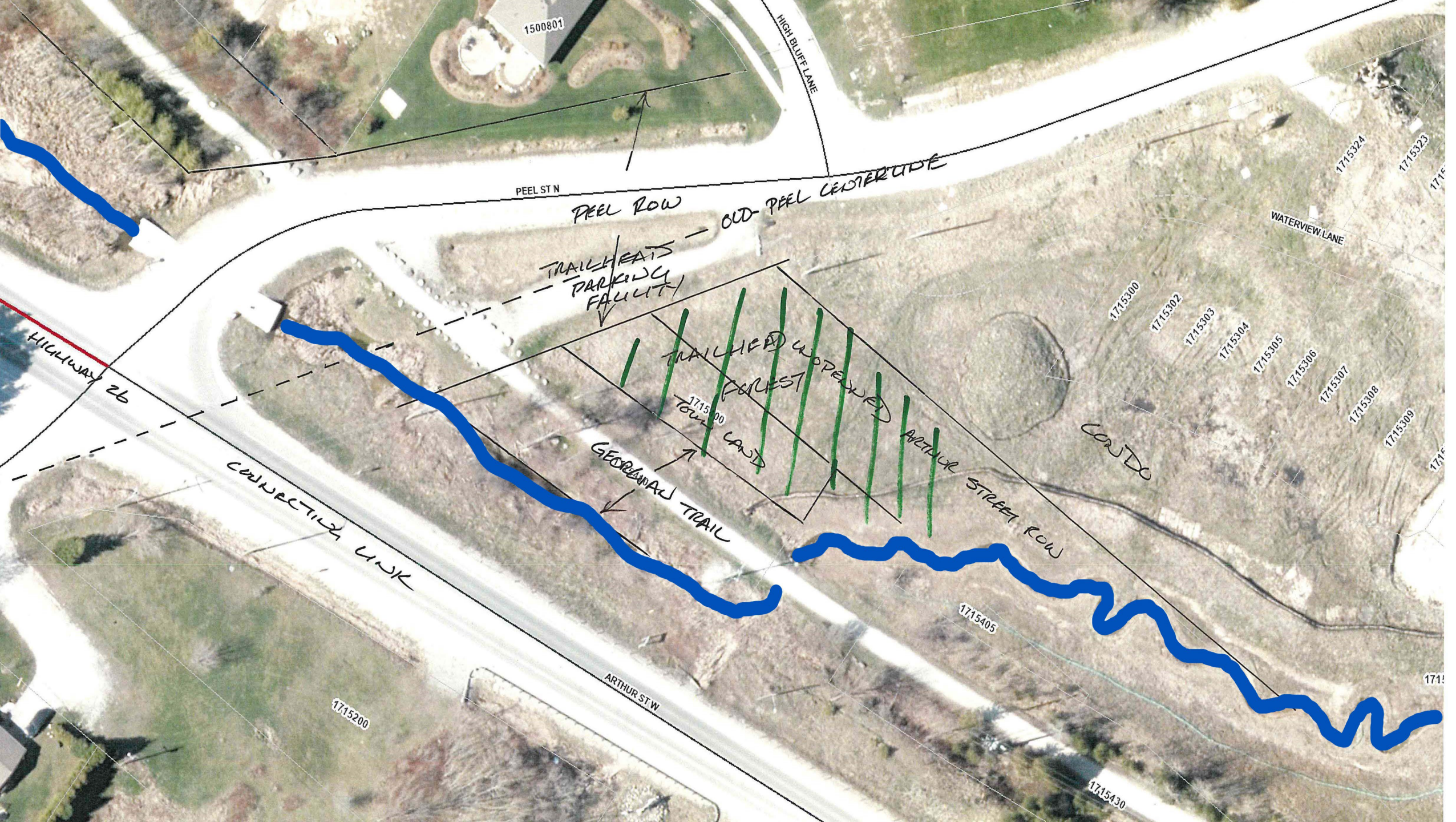
PROJECTED TREE LOSS AND WETLANDS IMPACT



CURRENT STATE OF
THE GEORGIAN TRAIL
FROM PEEL STREET
NORTH: LUSH,
HEALTHY VEGETATION



POTENTIAL FUTURE STATE: TREE REMOVAL AND CONSTRUCTION
IMPACTS ON THE WETLANDS





RISKS OF THE OPEN CUT METHOD

1. Why can town staff bypass MTO engineering standards for their servicing projects, but residents must strictly follow town engineering standards for their street projects?
2. Are the potential environmental risks of using the open cut method justified by the cost savings?
3. Can we afford the risk of a wastewater leak into the creek leading to the fish culvert in the Little Beaver River and to the area of the water plant, especially considering the *Safe Drinking Water Act, 2002*?



VIGILANCE IN DRINKING WATER SAFETY

1. How will the servicing projects ensure the protection of our drinking water sources, especially with construction work being done over and near wetlands?
2. Are we taking all necessary precautions to avoid future water contamination issues?

“Since Dr. John Snow’s 1854 discovery in London, England, that drinking water could kill people by transmitting disease, the developed world has come a long way towards eliminating the transmission of water-borne disease. The Walkerton experience warns that we may have become victims of our own success, taking for granted our drinking water’s safety. The keynote in the future should be vigilance. We should never be complacent about drinking water safety.”

- Justice Dennis O’Connor, *Report of the Walkerton Inquiry* (2002)

NEED FOR ACCOUNTABILITY AND TRANSPARENCY

1. Why was there no additional Public Information Centre (PIC) held to review the proposed scope changes, given the significant environmental impacts?
2. Have all necessary environmental assessments and approvals been obtained for the servicing projects, particularly concerning the wetlands and Georgian Trail?
3. Since the Saugeen Ojibway Nation (SON) is reassessing the archaeological study of Lora Greens, shouldn't we request them to extend it to the servicing area, including the trail and wetlands, to evaluate the cultural heritage of the area?

IS THE SKY REALLY FALLING?

Over-Allocated Pumping Station: The current pumping station and forcemain are currently over allocated (Bay St. E. Report).

Risk of Water Contamination: Watermain failures could contaminate the entire drinking water system (Bay St. E. Report).

Thornbury Wastewater Treatment Plant Overload: Extraneous flows pushing towards premature upgrades (2023 Year End Water Report).

Infrastructure Replacement Needed: Replacement needed for sewer, watermain, and stormwater systems (Peel St. N., Peel St. S., Bay St. E. Reports).

Development Halted: No new development in Thornbury West and Lora Bay until upgrades are completed (Bay St. E. Report).

Liability Risks: Delays could increase liability due to failed watermains, contamination, sewage backups, and reduced servicing allocation (Bay St. E. Report).

Need for Duplicate Water Main: Required between Peel Street and the 10th Line Booster Station to address suction problems (Peel St. N. Report).

Georgian Trail Upgrades Needed: Necessary between Peel Street and the 10th Line (Peel St. N. Report).





Image of the naturalized stream corridor that runs across the Campus of Care. It runs to the wetlands on Peel Street North.

REQUEST FOR COUNCIL

**EXPLORE AND IMPLEMENT
ALTERNATIVE SERVICING ROUTES
THAT AVOID HARMING THE
GEORGIAN TRAIL AND WETLANDS**