

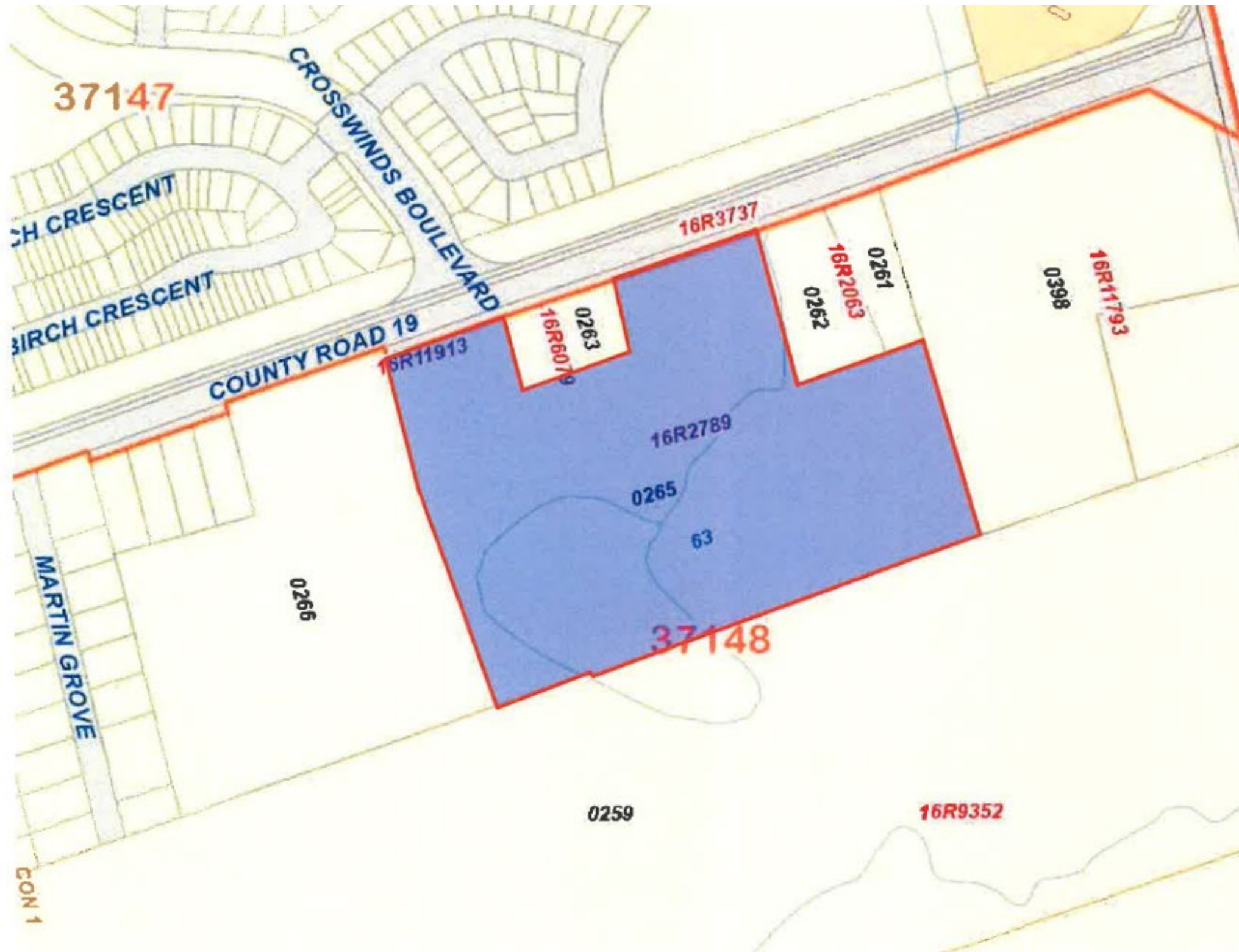
Preliminary Development Concept

South Side- Grey Road 19

Paul Mondell

2264164 Ontario Limited





Source: Grey Land Registry Office (No.16)
 © 2023 The Queen's Printer for Ontario



Location Map



DEVELOPMENT STATISTICS

BLOCK A: RETAIL GFA:10,644 SF RES. GFA: 21,288 SF STOREYS: 3 UNITS: 48	BLOCK H: TOTAL GFA: 42,577 SF STOREYS: 4 UNITS: 96
BLOCK B: RETAIL GFA:10,644 SF RES. GFA: 21,288 SF STOREYS: 3 UNITS: 48	BLOCK I: TOTAL GFA: 53,221 SF STOREYS: 5 UNITS: 120
BLOCK C: TOTAL GFA: 31,933 SF STOREYS: 3 UNITS: 72	BLOCK J: TOTAL GFA: 53,221 SF STOREYS: 5 UNITS: 120
BLOCK D: TOTAL GFA: 31,933 SF STOREYS: 3 UNITS: 72	BLOCK K: TOTAL GFA: 53,221 SF STOREYS: 5 UNITS: 120
BLOCK E: TOTAL GFA: 31,933 SF STOREYS: 3 UNITS: 72	BLOCK L: TOTAL GFA: 53,221 SF STOREYS: 5 UNITS: 120
BLOCK F: TOTAL GFA: 42,577 SF STOREYS: 4 UNITS: 96	BLOCK M: TOTAL GFA: 53,221 SF STOREYS: 5 UNITS: 120
BLOCK G: TOTAL GFA: 53,221 SF STOREYS: 5 UNITS: 120	

NORTHWEST QUADRANT
624 UNITS + 21,288 S.F. RETAIL
556 PARKING SPACES

SOUTHEAST QUADRANT
600 UNITS
458 PARKING SPACES

GREY ROAD 19 HOUSING DEVELOPMENT

TOWN OF THE BLUE MOUNTAINS



SITE PLAN

101 - 20 Camden Street
Toronto, Ontario, M5V 1V1
www.smvarch.com

T 416.506.1600 F 416.506.0956

DATE: Oct 25, 2023 - 1:10pm



GREY ROAD 19 HOUSING DEVELOPMENT

TOWN OF THE BLUE MOUNTAINS



101 - 20 Camden Street
Toronto, Ontario, M5V 1V1
www.smvarch.com

LOOKING SOUTH-EAST

T 416.506.1600 F 416.506.0956

DATE: Oct 25, 2023 - 1:13pm



GREY ROAD 19 HOUSING DEVELOPMENT

TOWN OF THE BLUE MOUNTAINS



101 - 20 Camden Street
Toronto, Ontario, M5V 1V1
www.smvarch.com

VIEW AT ENTRY

T 416.506.1600 F 416.506.0956

DATE: Oct 25, 2023 - 1:09pm



GREY ROAD 19 HOUSING DEVELOPMENT

TOWN OF THE BLUE MOUNTAINS



101 - 20 Camden Street
Toronto, Ontario, M5V 1V1
www.smvarch.com

VIEW AT SE QUADRANT

T 416.506.1600 F 416.506.0956

DATE: Oct 25, 2023 - 1:05pm



GREY ROAD 19 HOUSING DEVELOPMENT

TOWN OF THE BLUE MOUNTAINS



101 - 20 Camden Street
Toronto, Ontario, M5V 1V1
www.smvarch.com

PRECEDENT IMAGES

T 416.506.1600 F 416.506.0956

DATE: Oct 12, 2023 - 12:28pm